

# Wirruna genetics

what's in it for you?



## GENOMICS

Genomically tested to identify homozygous polled bulls, genetic conditions and improved EBV accuracy

## MUSCLE

Top 15% of breed for eye muscle area & better muscled steers

## MARBLING

Highest herd for genetics of IMF averaging in top 5% of Hereford breed to boost MSA index

## PROFIT POTENTIAL

2021 calves average in top 5% of Hereford breed for \$index values showing profitable balance of traits

## CALVING EASE

Low birth weights & calving ease in top 25% of breed

## DISPOSITION

Docility scores and docility EBVs to improve temperament

## GROWTH

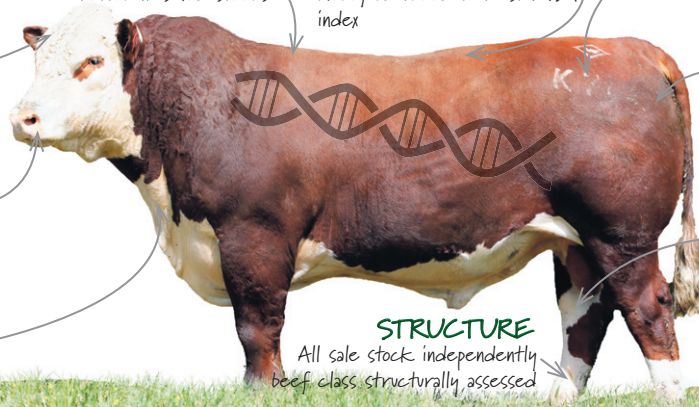
200 & 400 day growth averages in top 15% of breed for all 'S' calves

## FERTILITY

Vet checked, semen & service tested. Top 15% ranking for fertility traits

## STRUCTURE

All sale stock independently beef class structurally assessed



Enquiries and inspections welcome:

**Wirruna Poll Herefords**

"Spring Valley" Holbrook NSW 2644

Ian & Diana Locke M 0408 637 267 • E [ian@wirruna.com](mailto:ian@wirruna.com)

**ON-PROPERTY BULL & FEMALE SALE**  
**SPRING 23 AUGUST 2023 • AUTUMN 29 FEBRUARY 2024**  
**WWW.WIRRUNA.COM**

