



WIRRUNA
poll herefords

Contact: Ian Locke
Wirruna Poll Hereford Stud
"Spring Valley" Holbrook
NSW 2644

Mobile: (0408) 637 267
Email: office@wirruna.com
Website: www.wirruna.com

WIRRUNA POLL HEREFORDS

SEMEN SIRES

Ten of the Best

2023 CATALOGUE

Q036**Wirruna Qantas Q036 (AI)****WNAQ036****(Wirruna Semen Sires)**

Birth Date: 5-Aug-19
 Society ID: WNAQ036
 Horn/Scurs/Poll: Homozygous Poll (Poll Gene test)

- A proven Super Sire to drive herd performance - top \$Index for profit
- Highest fat & 3rd highest marbling scan out of over 200 contemporaries
- Excellent structure & attractive phenotype compliments strong EBV profile
- Used heavily at Wirruna to capture his unique set of breed leading traits

(HAL Super Sire) (NB. JTR Cattle Co have 100% possession & 50% semen share)**Easy-calve**

May 2023 GROUP BREEDPLAN EBV's

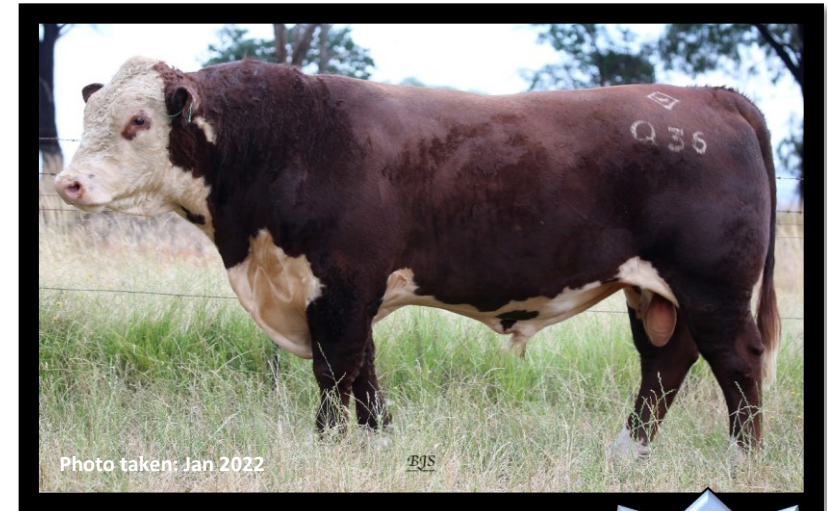
CALVING EASE				GROWTH & MATERNAL				
Calving Ease DIR (%)	Calving Ease DTRS (%)	Gestation Length (days)	Birth Weight	200-Day Growth	400-Day Weight	600-Day Weight	Mat Cow Weight	Genetic Milk
+10.4	+4.2	-8.6	+3.2	+51	+83	+114	+72	+24
71%	53%	91%	94%	91%	89%	88%	79%	65%

FERTILITY		CARCASE						
Scrotal Size (cm)	Days to Calving	Carc Weight	EMA (sq cm)	Rib Fat (mm)	Rump Fat (mm)	RBV (%)	IMF (%)	Trial Docility
+6.3	-6.5	+86	+4.9	+2.5	+3.5	-0.1	+3.0	+8
90%	55%	77%	69%	73%	77%	69%	77%	89%

STRUCTURAL ASSESSMENT				18-Jun-21			Temp.	
Front	Back	Front	Back				16-Jun-21	
6	5	5	6	5	5	4	44	2

SINDEK VALUE				Polled Gene	Maturity	Mus Score	EYES	
SSR	NSR	SBM	NBT					Eye Pigment
\$257	\$244	\$267	\$195	PP Homz	Mid	C+		100/100
							4	

Sire: WIRRUNA KALIMNA K326
 WIRRUNA EXPLORER E188
 WIRRUNA HARTWIG H297
 WIRRUNA MIDGE A51
 ARDO HUSTLER 4110 (IMP)
 WIRRUNA CORA H303
 WIRRUNA CORA D9
 MATARIKI HOLY-SMOKE
 WIRRUNA KEITH K169
 WIRRUNA DIDO F397
Dam: WIRRUNA LETITIA M367
 WIRRUNA ECHUCA E99
 WIRRUNA LETITIA J135
 WIRRUNA LETITIA E4



Semen Price
\$50/straw

Black highlight: Ranks with top 5% of breed

Grey highlight: Ranks with top 20% of breed

Q090**Wirruna Quamby Q090 (ET)****WNAQ090****(Wirruna Semen Sires)**

Birth Date: 9-Aug-19
 Society ID: WNAQ090
 Horn/Scurs/Poll: Homozygous Poll (Poll Gene test)

- Curve-bending EBV profile by Super Sire Matty, out of a proven Donor cow
- Calves born easily & early (Short Gestation) - with good early growth
- He combines high CWT, muscle & marbling to boost carcass performance
- Used over heifers, this fellow achieved top-end EMA scan & weight gains

(NB. NZ Semen rights owned by Shrimpton's Hill Herefords, Cheers family have 100% possession & 50% semen share)

**Easy-calve**

May 2023 GROUP BREEDPLAN EBV's

CALVING EASE				GROWTH & MATERNAL				
Calving Ease DIR (%)	Calving Ease DTRS (%)	Gestation Length (days)	Birth Weight	200-Day Growth	400-Day Weight	600-Day Weight	Mat Cow Weight	Genetic Milk
+10.2	+4.2	-6.1	+2.8	+45	+74	+97	+83	+13
71%	58%	80%	92%	88%	85%	85%	78%	68%

FERTILITY		CARCASS						
Scrotal Size (cm)	Days to Calving	Carc Weight	EMA (sq cm)	Rib Fat (mm)	Rump Fat (mm)	RBV (%)	IMF (%)	Trial Docility
+4.1	-4.3	+76	+5.1	+1.5	+2.2	+0.6	+2.2	+36
84%	55%	75%	67%	71%	74%	67%	73%	84%

STRUCTURAL ASSESSMENT						18-Jun-21	Temp.
Front	Back	Front	Back			16-Jun-21	
7	6	6	6	5	5	4	39
							1

INDEX VALUE				Polled Gene	Maturity	Mus Score	EYES	
SSR	NSR	SBM	NBT					Eye Pigment
\$205	\$204	\$222	\$172	PP Homz	Mid	C+		100/100
							4	

Sire: WIRRUNA MATTY M288

ALLENDALE YACKA
 ALLENDALE ANZAC E114
 ALLENDALE DAWN B22 (AI) (ET)

ELITE 4110 E212
 WIRRUNA CIRCLE H13
 WIRRUNA CIRCLE F31

MOUNT DIFFICULT FELLIS Y12 (AI)
 WIRRUNA DAFFY D1
 MOUNT DIFFICULT LAST DAY A205

Dam: WIRRUNA VICTORIA G7

ALLENDALE NATIONAL W168
 WIRRUNA VICTORIA E112
 SOUTH BUKALONG VICTORIA 202



Semen Price
\$50/straw

Black highlight: Ranks with top 5% of breed

Grey highlight: Ranks with top 20% of breed

Q135**Wirruna Quambone Q135 (AI)****WNAQ135****(Wirruna Semen Sires)**

Birth Date: 11-Aug-19
 Society ID: WNAQ135
 Horn/Scurs/Poll: Homozygous Poll (Poll Gene test)

- Techno son with curve bending growth, positive CE and moderate MCW
- Improve carcase attributes with top 1% CWT & IMF%, top 5% EMA EBVs
- Maternal strength via proven Dam, producing 3 Wirruna sires out of 7 calves
- I admire this fellows body length, shape & profitable balance of traits

(NB. Wongawilli Herefords have 100% possession & 50% semen share)**May 2023 GROUP BREEDPLAN EBV's**

CALVING EASE				GROWTH & MATERNAL				
Calving Ease DIR (%)	Calving Ease DTRS (%)	Gestation Length (days)	Birth Weight	200-Day Growth	400-Day Weight	600-Day Weight	Mat Cow Weight	Genetic Milk
+8.3	+7.3	-2.8	+3.8	+45	+83	+109	+73	+28
67%	55%	89%	91%	87%	85%	85%	77%	66%

FERTILITY		CARCASE						Trials
Scrotal Size (cm)	Days to Calving	Carc Weight	EMA (sq cm)	Rib Fat (mm)	Rump Fat (mm)	RBV (%)	IMF (%)	Docility
+2.2	-5.5	+86	+7.5	+2.0	+1.9	+0.9	+2.9	+33
85%	55%	75%	67%	71%	75%	68%	73%	79%

STRUCTURAL ASSESSMENT							18-Jun-21	Temp.
6	6	6	6	5	5	4	41	1

INDEX VALUE				Polled Gene	Maturity	Mus Score	EYES	
SSR	NSR	SBM	NBT					Eye Pigment
\$246	\$226	\$254	\$183	PP Homz	Mid	C+		100/100

Sire: KOANUI TECHNO 3062

KOANUI UNANIMOUS 7174
 KOANUI UNANIMOUS 0408
 KOANUI GIRLIE 3048

LEELANDS X-TENSION 293
 KOANUI BLUSH 6455
 KOANUI BLUSH 3304

QUAMBY PLAINS STOCKMASTER Y118
 WIRRUNA FLETCHER F214
 WIRRUNA LAST DAY B16 (H)

Dam: WIRRUNA LAST DAY H364

SOUTH BUKALONG WALLACE 2
 WIRRUNA LAST DAY F14
 WIRRUNA LAST DAY D34



Semen Price
\$50/straw

Black highlight: Ranks with top 5% of breed

Grey highlight: Ranks with top 20% of breed

Q266**Wirruna Querido Q266 (AI)****WNAQ266****(Wirruna Semen Sires)**

Birth Date: 20-Aug-19
 Society ID: WNAQ266
 Horn/Scurs/Poll: Homozygous Poll (Poll Gene test)

- Highest marbling sire in breed - I rate this EFB Validated son highly
- He carries both carcass quantity (top 5% EMA) & quality (top 1% IMF%)
- Offers strong calving ease, good early growth & moderate MCW EBVs
- I think this fellow is very well put together & offers outcross genetics

(NB. Morganvale Poll Herefords have 100% possession & 50% semen share)**May 2023 GROUP BREEDPLAN EBV's**

CALVING EASE				GROWTH & MATERNAL				
Calving Ease DIR (%)	Calving Ease DTRS (%)	Gestation Length (days)	Birth Weight	200-Day Growth	400-Day Weight	600-Day Weight	Mat Cow Weight	Genetic Milk
+7.3	+2.8	+1.2	+4.4	+49	+78	+105	+55	+22
67%	45%	86%	93%	87%	85%	86%	76%	62%

FERTILITY		CARCASS						
Scrotal Size (cm)	Days to Calving	Carc Weight	EMA (sq cm)	Rib Fat (mm)	Rump Fat (mm)	RBV (%)	IMF (%)	Trial Docility
+2.7	-4.7	+71	+7.4	+2.2	+2.1	-0.5	+4.0	+33
84%	46%	73%	63%	68%	72%	64%	70%	82%

STRUCTURAL ASSESSMENT						18-Jun-21	Temp.
Front	Back	Front	Back			16-Jun-21	
7	6	5	6	5	5	3	36
							2

INDEX VALUE				Polled Gene	Maturity	Mus Score	EYES	
SSR	NSR	SBM	NBT				Eye Pigment	
\$242	\$219	\$244	\$175	PP Homz	Mid	C+	100/100	4

EFBEEF FOREMOST U208 (IMP)
EFBEEF TFL U208 TESTED X651
EFBEEF P606 MABEL R415

Sire: EFBEEF BR VALIDATED B413

MSU TCF REVOLUTION 4R
EFBEEF 4R THYRA Y865
EFBEEF N014 THYRA S645

QUAMBY PLAINS STOCKMASTER Y118
WIRRUNA FLETCHER F214
WIRRUNA LAST DAY B16 (H)

Dam: CO-OP5 URSULA J427

WIRRUNA COMET C90
WIRRUNA URSULA E278
WIRRUNA URSULA A241



Semen Price
\$50/straw

Black highlight: Ranks with top 5% of breed

Grey highlight: Ranks with top 20% of breed

Q281**Wirruna Quarter Back Q281****WNAQ281****(Wirruna Semen Sires)**

Birth Date: 22-Aug-19
 Society ID: WNAQ281
 Horn/Scurs/Poll: Homozygous Poll (Poll Gene test)

- A HAL Super Sire for trait balance & proven performance
- Breed trait leader for short GL, 400D & 600D growth & scrotal size
- Top 1% ranking for \$Index values reflects excellent profit driving traits
- Note his good foot structure, tight sheath, docility & rich dark coat

(HAL Super Sire)**Easy-calve**

May 2023 GROUP BREEDPLAN EBV's

CALVING EASE				GROWTH & MATERNAL				
Calving Ease DIR (%)	Calving Ease DTRS (%)	Gestation Length (days)	Birth Weight	200-Day Growth	400-Day Weight	600-Day Weight	Mat Cow Weight	Genetic Milk
+9.6	+2.3	-4.7	+3.6	+40	+84	+110	+75	+16
64%	45%	82%	89%	83%	82%	81%	72%	58%

FERTILITY		CARCASE						
Scrotal Size (cm)	Days to Calving	Carc Weight	EMA (sq cm)	Rib Fat (mm)	Rump Fat (mm)	RBV (%)	IMF (%)	Trial Docility
+6.6	-5.7	+76	+5.5	+1.4	+1.8	+1.1	+1.7	+32
86%	46%	68%	60%	65%	70%	62%	66%	72%

STRUCTURAL ASSESSMENT				29-Sep-20		Temp.	
Front	Back	Front	Back			9-Apr-21	
6	5	5	6	5	5	4	41
							1

INDEX VALUE				Polled Gene	Maturity	Mus Score	EYES	
SSR	NSR	SBM	NBT					Eye Pigment
\$242	\$230	\$249	\$180	PP Homz	Mid	C+		100/100
							4	

ALLENDALE YACKA
 ALLENDALE ANZAC E114
 ALLENDALE DAWN B22 (AI) (ET)

Sire: WIRRUNA NEW ERA N068

WIRRUNA CANDIDATE C118
 WIRRUNA CORA E319
 WIRRUNA CORA B38

NITHDALE JACKAL 090029
 ORARI GORGE MISCHIEF 120083
 NITHDALE LESLIE 090020

Dam: WIRRUNA CIRCLE N138

WIRRUNA JANSEN J143
 WIRRUNA CIRCLE L421
 WIRRUNA CIRCLE H13



Semen Price
\$50/straw

Black highlight: Ranks with top 5% of breed

Grey highlight: Ranks with top 20% of breed

P149**Wirruna Papa P149 (AI)****WNAP149****(Wirruna Semen Sires)**

Birth Date: 10-Aug-18
 Society ID: WNAP149
 Horn/Scurs/Poll: Homozygous Poll (Poll Gene test)

- Papa is a classy, good-barrelled sire by Koanui Techno
- Appreciate his good growth without compromising the calving ease traits
- A high libido bull with high semen quality
- Trait leader in the breed for short GL and scrotal size - Top 1% RBY% EBV

(NB. Glendan Park Herefords have 100% possession & 50% semen share)

May 2023 GROUP BREEDPLAN EBV's

CALVING EASE				GROWTH & MATERNAL				
Calving Ease DIR (%)	Calving Ease DTRS (%)	Gestation Length (days)	Birth Weight	200-Day Growth	400-Day Weight	600-Day Weight	Mat Cow Weight	Genetic Milk
+6.8	+7.2	-4.5	+5.8	+41	+74	+104	+87	+19
66%	54%	91%	94%	90%	87%	86%	77%	70%

FERTILITY		CARCASE						
Scrotal Size (cm)	Days to Calving	Carc Weight	EMA (sq cm)	Rib Fat (mm)	Rump Fat (mm)	RBY (%)	IMF (%)	Trial Docility
+3.4	-3.7	+73	+6.5	+0.9	+1.2	+2.7	+1.0	+37
88%	54%	75%	66%	70%	74%	67%	73%	79%

STRUCTURAL ASSESSMENT							23-Dec-20	Temp.
							14-Dec-20	
6	7	6	7	5	5	3	41	1

SINDEXTM VALUE				Polled Gene	Maturity	Mus Score	EYES	
SSR	NSR	SBM	NBT					Eye Pigment
\$214	\$206	\$225	\$162	PP Homz	Mid	C+		100/100
							4	

Sire: KOANUI TECHNO 3062

KOANUI UNANIMOUS 7174
 KOANUI UNANIMOUS 0408
 KOANUI GIRLIE 3048

LEELANDS X-TENSION 293
 KOANUI BLUSH 6455
 KOANUI BLUSH 3304

MOUNT DIFFICULT CADBURY
 WIRRUNA JACKAROO J35
 WIRRUNA MADAM G153

Dam: WIRRUNA LAST DAY L417

EFBEEF FOREMOST U208 (IMP)
 WIRRUNA LAST DAY J438
 WIRRUNA LAST DAY D84



Black highlight: Ranks with top 5% of breed

Grey highlight: Ranks with top 20% of breed

N322**Wirruna National N322 (AI)****WNAN322****(Wirruna Semen Sires)**

Birth Date: 23-Aug-17
 Society ID: WNAN322
 Horn/Scurs/Poll: Homozygous Poll (Poll Gene test)

- High \$Index sire by Revolution showing a good balance of desirable traits
- Displays excellent B- muscling - Highest EMA EBV in breed
- I appreciate the rare trait combination of high meat yield & carcass quality
- Features curve-bending & top 20% growth, with moderate BWT & MCW

(NB. Morganvale Poll Herefords have 100% possession & 50% semen share)**Easy-calve**

May 2023 GROUP BREEDPLAN EBV's

CALVING EASE				GROWTH & MATERNAL				
Calving Ease DIR (%)	Calving Ease DTRS (%)	Gestation Length (days)	Birth Weight	200-Day Growth	400-Day Weight	600-Day Weight	Mat Cow Weight	Genetic Milk
+6.7	+6.4	+1.4	+4.1	+44	+73	+96	+64	+21
72%	60%	92%	96%	94%	93%	93%	86%	80%

FERTILITY		CARCASS						
Scrotal Size (cm)	Days to Calving	Carc Weight	EMA (sq cm)	Rib Fat (mm)	Rump Fat (mm)	RBV (%)	IMF (%)	Trial Docility
+2.0	-4.4	+76	+14.0	+1.4	+1.8	+3.9	+2.0	+27
91%	62%	81%	71%	75%	80%	73%	79%	82%

STRUCTURAL ASSESSMENT						4-Jul-19	Temp.
6	6	5	6	5	5	4	38
						4-Jul-19	2

INDEX VALUE				Polled Gene	Maturity	Mus Score	EYES	
SSR	NSR	SBM	NBT					Eye Pigment
\$240	\$243	\$244	\$176	PP Homz	Mid	B-	4	100/100

FELTONS LEGEND 242 (IMP USA)
 MSU TCF REVOLUTION 4R
 MSU TCF RACHAEL ET 54N

Sire: KCF BENNETT REVOLUTION X51

EFBEEF SCHU-LAR PROFICIENT N093 (IMP USA)
 KCF MISS PROFICIENT U201
 KCF MISS 774 L82

CAPETHORNE HOT SHOT 03 22
 MATARIKI HOLY-SMOKE
 MATARIKI GIRLIE 00323

Dam: WIRRUNA DOREEN J56

WIRRUNA DAVE D101
 WIRRUNA DOREEN G327
 WIRRUNA DOREEN C9



Semen Price
\$40/straw

Black highlight: Ranks with top 5% of breed

Grey highlight: Ranks with top 20% of breed

N449**Wirruna Neutron N449****WNAN449****(Wirruna Semen Sires)**

Birth Date: 2-Sep-17
 Society ID: WNAN449
 Horn/Scurs/Poll: Poll

- Top selling bull Autumn 2020 - 2nd Sire produced by this Dam
- Offers superior carcass attributes - top 1% ranking for EMA & top 5% IMF%
- I love his B- muscling and easy-doing ability
- Strong fertility traits with good Scrotal Size & Days to Calving EBVs

(NB. Cascade Poll Herefords have 100% possession & 50% semen share)**Easy-calve**

May 2023 GROUP BREEDPLAN EBV's

CALVING EASE				GROWTH & MATERNAL				
Calving Ease DIR (%)	Calving Ease DTRS (%)	Gestation Length (days)	Birth Weight	200-Day Growth	400-Day Weight	600-Day Weight	Mat Cow Weight	Genetic Milk
+9.6	+3.4	-4.3	+3.4	+36	+63	+87	+54	+18
69%	54%	91%	95%	91%	90%	91%	83%	73%

FERTILITY		CARCASS						
Scrotal Size (cm)	Days to Calving	Carc Weight	EMA (sq cm)	Rib Fat (mm)	Rump Fat (mm)	RBV (%)	IMF (%)	Trial Docility
+3.6	-8.6	+71	+9.8	+1.8	+1.7	+2.3	+2.0	-2
89%	57%	78%	68%	72%	78%	70%	77%	84%

STRUCTURAL ASSESSMENT						4-Jul-19	Temp.
7	6	6	6	5	5	4	42
							2

INDEX VALUE				Polled Gene	Maturity	Mus Score	EYES	
SSR	NSR	SBM	NBT					Eye Pigment
\$235	\$229	\$232	\$166	Ph Hetz	Mid	B-		100/100
							4	

QUAMBY PLAINS STOCKMASTER Y118
 WIRRUNA FLETCHER F214
 WIRRUNA LAST DAY B16 (H)

Sire: WIRRUNA KILLARA K106

WIRRUNA DAFFY D1
 WIRRUNA MIDGE G482
 WIRRUNA MIDGE C76

STUDBROOK D'ARTAGNION V086 (AI) (I)
 OTAPAWA SPARK 3060 (IMP)
 OTAPAWA SPOT P30

Dam: WIRRUNA VICTORIA J199

SOUTH BUKALONG UNGAR 8
 SOUTH BUKALONG VICTORIA 236
 SOUTH BUKALONG VICTORIA 200



Semen Price
\$40/straw

Black highlight: Ranks with top 5% of breed

Grey highlight: Ranks with top 20% of breed

L95**Wirruna Leap Forward L95 (AI)****WNAL95****(Wirruna Semen Sires)**

Birth Date: 10-Aug-15
 Society ID: WNAL95
 Horn/Scurs/Poll: Poll

- Wirruna Sire by No.1 US multi-trait proven bull featuring over 1,600 progeny
- Out of a top Wirruna Donor cow from a strong carcass family
- Use to capture his exceptional birth to growth spread and maternal attributes
- Use to boost carcass - Eye Muscle Area & Marbling among the breed's best

(NB. 50% semen rights owned by Quaindering Poll Herefords)**Easy-calve**

May 2023 GROUP BREEDPLAN EBV's

CALVING EASE				GROWTH & MATERNAL				
Calving Ease DIR (%)	Calving Ease DTRS (%)	Gestation Length (days)	Birth Weight	200-Day Growth	400-Day Weight	600-Day Weight	Mat Cow Weight	Genetic Milk
+8.6	+4.7	-2.8	+3.2	+43	+66	+86	+63	+24
87%	73%	97%	97%	96%	96%	96%	92%	91%

FERTILITY		CARCASS						
Scrotal Size (cm)	Days to Calving	Carc Weight	EMA (sq cm)	Rib Fat (mm)	Rump Fat (mm)	RBV (%)	IMF (%)	Trial Docility
+3.3	-7.4	+59	+8.7	+2.4	+3.3	+1.1	+1.7	+38
95%	67%	88%	80%	83%	87%	81%	87%	90%

STRUCTURAL ASSESSMENT						8-Jan-18	Temp.
7	6	6	6	5	6	3	24-Jan-18 40
							1

INDEX VALUE				Polled Gene	Maturity	Mus Score	EYES	
SSR	NSR	SBM	NBT					Eye Pigment
\$205	\$203	\$210	\$156	PP Homz	Mid	C+		100/100
							4	

FELTONS LEGEND 242 (IMP USA)
 MSU TCF REVOLUTION 4R
 MSU TCF RACHAEL ET 54N

Sire: KCF BENNETT REVOLUTION X51
EFBEEF SCHU-LAR PROFICIENT N093 (
 KCF MISS PROFICIENT U201
 KCF MISS 774 L82

WIRRUNA VICKERY (S)
 WIRRUNA COMMANDER C68
 WIRRUNA GOLDEN VANITY Z71

Dam: WIRRUNA MIDGE F322
MOUNT DIFFICULT FELLIS Y12 (AI)
 WIRRUNA MIDGE A51
 WIRRUNA MIDGE Q126



Photo taken: Nov 2016

Semen Price
\$40/straw

Black highlight: Ranks with top 5% of breed

Grey highlight: Ranks with top 20% of breed

F214**Wirruna Fletcher F214****WNAF214****(Wirruna Semen Sires)**

Birth Date: 26-Aug-10
 Society ID: WNAF214
 Horn/Scurs/Poll: Poll

- Sale topping sire (Autumn 2013) with good structure & great body
- A breed trait leader for short GL, 200D growth & marbling
- A well proven sire used in the BIN Progeny Test - over 400 progeny
- High \$Index rated amongst the best in the breed - High accuracy sire

(NB. Yavenvale Herefords have 100% possession & 50% semen share)

May 2023 GROUP BREEDPLAN EBV's

CALVING EASE				GROWTH & MATERNAL				
Calving Ease DIR (%)	Calving Ease DTRS (%)	Gestation Length (days)	Birth Weight	200-Day Growth	400-Day Weight	600-Day Weight	Mat Cow Weight	Genetic Milk
+8.0	+10.2	-6.9	+4.6	+48	+73	+94	+59	+20
92%	83%	97%	98%	97%	97%	97%	96%	96%

FERTILITY		CARCASE						
Scrotal Size (cm)	Days to Calving	Carc Weight	EMA (sq cm)	Rib Fat (mm)	Rump Fat (mm)	RBV (%)	IMF (%)	Trial Docility
+1.8	-7.3	+67	+5.7	+0.1	-1.9	+1.3	+2.4	+23
97%	82%	94%	91%	92%	94%	89%	94%	95%

STRUCTURAL ASSESSMENT						1-Feb-13	Temp.	
							19-Dec-12 44	

SINDEK VALUE				Polled Gene	Maturity	Mus Score	EYES	
SSR	NSR	SBM	NBT					Eye Pigment
\$231	\$206	\$230	\$156	Ph Hetz	Late	B-		100/100

Sire: **QUAMBY PLAINS STOCKMASTER Y118**
 REMITALL HOLLYWOOD 3 7H
 NOOKEN VALERIAN 2
 GL T5 PROFOUND 80U APRIL 37Y (IMP)
 BOWEN TAMBORINE T226
 QUAMBY PLAINS MAGPIE W9
 QUAMBY PLAINS MAGPIE R21

Dam: **WIRRUNA LAST DAY B16 (H)**
 MOUNT DIFFICULT PARAMONT
 MOUNT DIFFICULT UNGAR (S)
 MOUNT DIFFICULT LAST DAY R121
 WIRRUNA WALKER
 WIRRUNA LAST DAY Z152
 WIRRUNA LAST DAY W105



Photo taken: Feb 2013

Semen Price
\$40/straw

Black highlight: Ranks with top 5% of breed

Grey highlight: Ranks with top 20% of breed

May 2023 Hereford BREEDPLAN - Percentile Bands for all 2021 born animals

Use this table as a guide to compare individual animals with the current genetic level of the breed

	Calv-Ease		Birth		Growth					Fert		Carcase					Extra		Indexes				
	Dir	Dtrs	GL	Bwt	200	400	600	Mwt	Milk	SS	DC	Cwt	EMA	Rib	P8	RBY	IMF	Doc	NFI	SSR	NSR	SBM	NBT
	%		days	kg					cm	days	kg	sq.cm	mm		%	kg/day		\$					
High 1%	+12.5	+9.6	-6.9	-1.6	+50	+83	+118	+113	+28	+4.5	-6.6	+80	+7.7	+2.7	+3.8	+2.6	+2.4	+46	-0.38	+221	+210	+229	+168
High 5%	+10.4	+7.4	-4.3	+0.1	+45	+75	+106	+99	+25	+3.7	-5.6	+71	+6.4	+2.1	+2.9	+2.1	+1.8	+41	-0.21	+196	+186	+206	+151
High 10%	+9.1	+6.3	-3.2	+1.0	+42	+71	+100	+92	+23	+3.3	-5.1	+67	+5.8	+1.8	+2.5	+1.8	+1.5	+39	-0.16	+184	+173	+193	+141
High 15%	+8.0	+5.6	-2.6	+1.6	+41	+68	+96	+87	+22	+3.0	-4.7	+64	+5.4	+1.6	+2.2	+1.6	+1.3	+37	-0.12	+175	+164	+183	+135
High 20%	+7.2	+5.0	-2.2	+2.1	+40	+66	+93	+83	+21	+2.8	-4.4	+62	+5.1	+1.5	+2.0	+1.4	+1.1	+36	-0.08	+168	+157	+176	+129
High 25%	+6.4	+4.5	-1.8	+2.5	+38	+64	+90	+80	+20	+2.7	-4.2	+60	+4.8	+1.3	+1.8	+1.3	+1.0	+34	-0.05	+162	+150	+168	+124
High 30%	+5.7	+4.0	-1.5	+2.8	+37	+62	+88	+77	+19	+2.5	-4.0	+59	+4.6	+1.2	+1.6	+1.2	+0.9	+33	-0.03	+157	+144	+162	+119
High 35%	+5.0	+3.6	-1.3	+3.1	+36	+61	+86	+74	+19	+2.4	-3.7	+57	+4.4	+1.1	+1.5	+1.1	+0.8	+32	-0.02	+152	+139	+156	+115
High 40%	+4.3	+3.2	-1.0	+3.5	+36	+59	+83	+72	+18	+2.3	-3.5	+55	+4.2	+1.0	+1.3	+1.0	+0.7	+31	-0.01	+147	+133	+150	+110
High 45%	+3.6	+2.7	-0.8	+3.7	+35	+58	+81	+69	+18	+2.2	-3.3	+54	+4.0	+0.9	+1.2	+0.9	+0.7	+30	+0.01	+142	+128	+145	+106
50%	+3.0	+2.3	-0.6	+4.0	+34	+56	+79	+67	+17	+2.1	-3.1	+53	+3.8	+0.8	+1.0	+0.8	+0.6	+29	+0.02	+137	+123	+139	+102
Low 45%	+2.3	+1.9	-0.4	+4.3	+33	+55	+77	+64	+16	+2.0	-2.9	+51	+3.6	+0.7	+0.9	+0.7	+0.5	+27	+0.03	+132	+118	+134	+98
Low 40%	+1.6	+1.5	-0.2	+4.6	+32	+53	+75	+62	+16	+1.9	-2.7	+50	+3.5	+0.6	+0.7	+0.6	+0.4	+26	+0.04	+128	+113	+129	+95
Low 35%	+1.0	+1.1	+0.0	+4.9	+31	+52	+73	+59	+15	+1.8	-2.5	+48	+3.3	+0.5	+0.6	+0.5	+0.4	+25	+0.05	+123	+108	+123	+91
Low 30%	+0.2	+0.7	+0.3	+5.2	+30	+50	+70	+56	+15	+1.7	-2.3	+46	+3.1	+0.4	+0.4	+0.4	+0.3	+24	+0.06	+118	+103	+118	+87
Low 25%	-0.5	+0.2	+0.5	+5.5	+29	+49	+68	+53	+14	+1.6	-2.0	+45	+3.0	+0.3	+0.3	+0.3	+0.2	+22	+0.07	+112	+97	+112	+83
Low 20%	-1.3	-0.3	+0.8	+5.8	+28	+47	+65	+49	+13	+1.4	-1.7	+43	+2.8	+0.2	+0.1	+0.2	+0.1	+20	+0.09	+106	+91	+105	+78
Low 15%	-2.3	-0.8	+1.1	+6.2	+26	+45	+62	+45	+12	+1.3	-1.4	+41	+2.6	+0.0	-0.1	+0.0	+0.0	+18	+0.10	+99	+85	+98	+72
Low 10%	-3.4	-1.6	+1.5	+6.6	+24	+42	+57	+40	+11	+1.1	-1.1	+38	+2.3	-0.2	-0.4	-0.1	-0.1	+15	+0.12	+91	+76	+89	+66
Low 5%	-5.2	-2.7	+2.2	+7.3	+22	+37	+50	+32	+9	+0.8	-0.6	+34	+1.9	-0.5	-0.9	-0.4	-0.3	+10	+0.17	+79	+63	+75	+56
Low 1%	-9.2	-5.0	+4.0	+8.5	+16	+27	+35	+12	+6	+0.2	+0.3	+24	+1.2	-1.2	-1.8	-0.9	-0.7	-2	+0.28	+50	+39	+44	+33