



WIRRUNA
poll herefords

Contact: Ian Locke
Wirruna Poll Hereford Stud
"Spring Valley" Holbrook
NSW 2644

Phone: (02) 60362877
Mobile: (0408) 637 267
Email: office@wirruna.com
Website: www.wirruna.com

WIRRUNA POLL HEREFORDS

SEMEN SIRE

Young Guns

2022



Wirruna Poll Hereford Stud
IAN & DIANA LOCKE
"Spring Valley"
Holbrook NSW 2644

ph. 02 6036 2877
mb. 0408 637 267
email office@wirruna.com
Website www.wirruna.com

Wirruna Semen Sires

Young Guns



Apr 2022 GROUP BREEDPLAN EBV's

Black highlight: Ranks with top 5% of breed
Grey highlight: Ranks with top 20% of breed

Tag No	Animal Tag	Sire	CALVING EASE				GROWTH & MATERNAL					FERTILITY		CARCASE DATA EBV's						Trial Docility	INDEX VALUE				Semen Price/straw
			CED	CEM	GL	BW	200	400	600	MCW	Milk	SS	DC	CW	EMA	Rib Fat	P8 Fat	RBY	IMF		SSR	NSR	SBM	NBT	
R084	Wirruna Romeo R084 (AI)	Glentrevor Trust N909	+11.7	+8.8	-5.5	+1.9	+45	+77	+104	+87	+21	+3.3	-2.7	+78	+4.0	+0.7	+0.7	+0.8	+1.6	+14	\$204	\$193	\$235	\$178	\$60
R105	Wirruna Real Deal R105 (AI)	Wirruna Kalimna K326	+7.9	+7.4	-4.7	+4.2	+45	+78	+101	+61	+21	+3.5	-8.8	+74	+5.8	+2.6	+2.6	+0.7	+2.6	+7	\$256	\$243	\$250	\$170	\$60
R121	Wirruna Ryan R121 (AI)	Wirruna Ledger L285	+7.0	+5.6	-4.5	+4.7	+51	+84	+113	+87	+22	+3.5	-4.5	+80	+6.4	+0.8	+0.5	+1.2	+2.4	+14	\$231	\$213	\$239	\$175	\$60
R203	Wirruna Redgate R203 (ET)	Tobruk Lennox	+5.5	+6.1	-1.7	+4.8	+47	+79	+100	+81	+14	+4.7	-7.3	+78	+6.9	+1.3	+2.0	+2.0	+0.8	-1	\$224	\$223	\$219	\$153	\$60
R355	Wirruna Rockefeller R355	Wirruna Napier N216	+7.8	+6.7	-3.8	+1.6	+33	+66	+81	+62	+19	+3.8	-5.7	+66	+8.6	+2.7	+3.4	+0.1	+3.3	-14	\$201	\$197	\$207	\$154	\$60
Q036	Wirruna Qantas Q036 (AI)	Wirruna Kalimna K326	+11.9	+5.4	-8.3	+3.0	+49	+79	+108	+76	+25	+5.3	-7.0	+83	+4.9	+2.9	+4.2	-0.3	+2.6	-12	\$239	\$229	\$255	\$190	\$50
Q090	Wirruna Quamby Q090 (ET)	Wirruna Matty M288	+10.9	+4.9	-7.0	+3.5	+48	+78	+100	+77	+17	+4.0	-4.8	+80	+5.9	+1.5	+2.2	+1.1	+1.9	+13	\$218	\$214	\$235	\$177	\$50
Q100	Wirruna Quality Q100 (AI)	Wirruna Matty M288	+9.1	+6.0	-5.2	+5.3	+49	+80	+113	+83	+22	+3.5	-4.1	+72	+5.7	+1.9	+2.4	+0.4	+3.6	+7	\$243	\$228	\$256	\$191	\$50
Q135	Wirruna Quambone Q135 (AI)	Koanui Techno 3062	+8.2	+7.1	-2.0	+4.1	+44	+79	+105	+72	+30	+2.5	-5.7	+79	+6.1	+1.6	+1.4	+0.9	+2.4	+3	\$229	\$207	\$239	\$172	\$50
Q266	Wirruna Querido Q266 (AI)	EFB Validated B413	+8.9	+5.6	+0.5	+4.2	+48	+77	+103	+59	+19	+3.4	-5.2	+70	+6.8	+1.8	+1.3	+0.0	+3.2	+6	\$241	\$221	\$246	\$174	\$50
Q281	Wirruna Quarter Back Q281	Wirruna New Era N068	+10.1	+2.4	-3.9	+3.8	+40	+80	+110	+76	+18	+5.6	-6.1	+78	+6.5	+1.8	+2.5	+0.9	+2.1	+7	\$244	\$231	\$251	\$183	\$50
Breed Ave. '20 drop			+2.4	+2.1	-0.7	+4.0	+33	+55	+78	+66	+17	+2.1	-3.0	+51	+3.8	+0.8	+1.0	+0.8	+0.6	+3	\$132	\$119	\$134	\$99	+ GST

Improve your beef herd profitability with Wirruna Poll Hereford genetics

- Disciplined Approach to Breeding**
All cows must raise live unassisted calf at 2 yrs and rejoin annually in strict 6 week joining period to remain in herd
- High level Performance Program**
*All cattle assessed in large management groups and run at high stocking rates to screen commercially acceptable genetics
 Recognised as one of the leading Breedplan performance recorded herds in Australia*
- Breed leading genetics**
All 2021 Wirruna born calves average in top 5% of the breed for all \$Indices

R084**Wirruna Romeo R084 (AI)****WNAR084****(Wirruna Semen Sires)**

Birth Date: 5-Aug-20
 Society ID: WNAR084
 Horn/Scurs/Poll: Homozygous Poll (Poll Gene test)

- A stylish curve-bending sire by Glentrevor Trust N909 - used over heifers
- He carries exceptional growth from a strong calving ease base (top 5%)
- Named 'Romeo' - his paddock performance displays high libido behaviour
- He features excellent structure, docility, proven fertility & top 5% \$Indices

*Easy-calve*

Apr 2022 GROUP BREEDPLAN EBV's

CALVING EASE				GROWTH & MATERNAL				
Calving Ease DIR (%)	Calving Ease DTRS (%)	Gestation Length (days)	Birth Weight	200-Day Growth	400-Day Weight	600-Day Weight	Mat Cow Weight	Genetic Milk
+11.7	+8.8	-5.5	+1.9	+45	+77	+104	+87	+21
47%	35%	75%	72%	69%	69%	70%	63%	54%

FERTILITY		CARCASE						
Scrotal Size (cm)	Days to Calving	Carc Weight	EMA (sq cm)	Rib Fat (mm)	Rump Fat (mm)	RBY (%)	IMF (%)	Trial Docility
+3.3	-2.7	+78	+4.0	+0.7	+0.7	+0.8	+1.6	+14
77%	40%	62%	52%	58%	62%	53%	61%	53%

STRUCTURAL ASSESSMENT							23-Sep-21	Temp.
							23-Sep-21	
6	5	5	5	5	5	4	37	1

INDEX VALUE				Polled Gene	Maturity	Mus Score	EYES	
SSR	NSR	SBM	NBT					Eye Pigment
\$204	\$193	\$235	\$178	PP Homz	Mid	C+		100/95
							4	

NJW 73S M326 TRUST 100W
 ELITE TRUST K215
 ELITE RUTH 0219 D163

Sire: GLENTREVOR TRUST N909

SOUTH BUKALONG WALLACE 2
 GLENTREVOR SIRIKIT J504
 GLENTREVOR SIRIKIT F252

ALLENDALE ANZAC E114
 WIRRUNA MATTY M288
 WIRRUNA CIRCLE H13

Dam: WIRRUNA GOLDEN VANITY P412

MOUNT DIFFICULT CADBURY
 WIRRUNA GOLDEN VANITY M156
 WIRRUNA GOLDEN VANITY J342



Semen Price
\$60/straw

Black highlight: Ranks with top 5% of breed
 Grey highlight: Ranks with top 20% of breed

R105**Wirruna Real Deal R105 (AI)****WNAR105****(Wirruna Semen Sires)**

Birth Date: 5-Aug-20
 Society ID: WNAR105
 Horn/Scurs/Poll: Homozygous Poll (Poll Gene test)

- The standout Kalimna son with curve-bending growth & strong marbling
- I like his balance of CE, growth, milk, fertility & positive carcase attributes
- One of the top bulls in the breed for \$Index values - No 1 'R' Bull for NSR
- A first choice Wirruna joining sire for his soundness & outstanding phenotype

*Easy-calve*

Apr 2022 GROUP BREEDPLAN EBV's

CALVING EASE				GROWTH & MATERNAL				
Calving Ease DIR (%)	Calving Ease DTRS (%)	Gestation Length (days)	Birth Weight	200-Day Growth	400-Day Weight	600-Day Weight	Mat Cow Weight	Genetic Milk
+7.9	+7.4	-4.7	+4.2	+45	+78	+101	+61	+21
54%	46%	76%	73%	70%	71%	72%	68%	64%

FERTILITY		CARCASE						
Scrotal Size (cm)	Days to Calving	Carc Weight	EMA (sq cm)	Rib Fat (mm)	Rump Fat (mm)	RBV (%)	IMF (%)	Trial Docility
+3.5	-8.8	+74	+5.8	+2.6	+2.6	+0.7	+2.6	+7
78%	50%	67%	60%	65%	67%	58%	65%	57%

STRUCTURAL ASSESSMENT						23-Sep-21	Temp.	
6	6	5	6	5	5	4	38	
							23-Sep-21	2

\$INDEX VALUE				Polled Gene	Maturity	Mus Score	EYES	
SSR	NSR	SBM	NBT					Eye Pigment
\$256	\$243	\$250	\$170	PP Homz	Mid	C+		100/100
							4	

Sire: WIRRUNA KALIMNA K326
 WIRRUNA EXPLORER E188
 WIRRUNA HARTWIG H297
 WIRRUNA MIDGE A51
 ARDO HUSTLER 4110 (IMP)
 WIRRUNA CORA H303
 WIRRUNA CORA D9
 QUAMBY PLAINS STOCKMASTER Y118
 WIRRUNA FLETCHER F214
 WIRRUNA LAST DAY B16 (H)
Dam: WIRRUNA GOLDEN VANITY N085
 WIRRUNA JAVA J80
 WIRRUNA GOLDEN VANITY L453
 WIRRUNA GOLDEN VANITY H139



Semen Price
\$60/straw

Black highlight: Ranks with top 5% of breed

Grey highlight: Ranks with top 20% of breed

R121**Wirruna Ryan R121 (AI)****WNAR121****(Wirruna Semen Sires)**

Birth Date: 6-Aug-20
 Society ID: WNAR121
 Horn/Scurs/Poll: Homozygous Poll (Poll Gene test)

- A Wirruna sire achieving top-end muscle & marbling scan data
- He combines the valuable trait combination of top 5% EMA & top 1% IMF%
- He offers top 1% early growth traits, without compromising the CE traits
- Use to boost growth, carcass performance & profit potential (top 1% \$Index)



Apr 2022 GROUP BREEDPLAN EBV's

CALVING EASE				GROWTH & MATERNAL				
Calving Ease DIR (%)	Calving Ease DTRS (%)	Gestation Length (days)	Birth Weight	200-Day Growth	400-Day Weight	600-Day Weight	Mat Cow Weight	Genetic Milk
+7.0	+5.6	-4.5	+4.7	+51	+84	+113	+87	+22
50%	43%	75%	72%	68%	68%	69%	64%	60%

FERTILITY		CARCASS						
Scrotal Size (cm)	Days to Calving	Carc Weight	EMA (sq cm)	Rib Fat (mm)	Rump Fat (mm)	RBV (%)	IMF (%)	Trial Docility
+3.5	-4.5	+80	+6.4	+0.8	+0.5	+1.2	+2.4	+14
77%	45%	61%	53%	58%	62%	54%	60%	57%

STRUCTURAL ASSESSMENT								23-Sep-21	Temp.									
	Front		Back		Front		Back		5		5		4		23-Sep-21	35		2
6	6	6	5	5	5	5	4	35	2									

\$INDEX VALUE				Polled Gene	Maturity	Mus Score	EYES	
SSR	NSR	SBM	NBT					Eye Pigment
\$231	\$213	\$239	\$175	PP Homz	Mid	C+		100/100
							4	

Sire: **WIRRUNA LEDGER L285**

ALLENDALE YACKA
 ALLENDALE ANZAC E114
 ALLENDALE DAWN B22 (AI) (ET)

GH ADAMS TARGET 5S (IMP)
 WIRRUNA DOREEN G115
 WIRRUNA DOREEN A37

QUAMBY PLAINS STOCKMASTER Y118
 WIRRUNA FLETCHER F214
 WIRRUNA LAST DAY B16 (H)

Dam: **WIRRUNA CIRCLE N057**

ELITE 4110 E212
 WIRRUNA CIRCLE L81
 WIRRUNA CIRCLE F31



Semen Price
\$60/straw

Black highlight: Ranks with top 5% of breed

Grey highlight: Ranks with top 20% of breed

R203**Wirruna Redgate R203 (ET)****WNAR203****(Wirruna Semen Sires)**

Birth Date: 9-Aug-20
 Society ID: WNAR203
 Horn/Scurs/Poll: Homozygous Poll (Poll Gene test)

- A classy & well-muscled Lennox son out of a highly proven donor cow
- Offers plenty of growth - top 5% for 200D & 400D, top 1% CWT EBVs
- A B- muscle pattern supported by top-end EMA & RBV% EBVs
- Note his large testicles combined with high fertility genes - top 1% SS & DtC



Apr 2022 GROUP BREEDPLAN EBV's

CALVING EASE				GROWTH & MATERNAL				
Calving Ease DIR (%)	Calving Ease DTRS (%)	Gestation Length (days)	Birth Weight	200-Day Growth	400-Day Weight	600-Day Weight	Mat Cow Weight	Genetic Milk
+5.5	+6.1	-1.7	+4.8	+47	+79	+100	+81	+14
55%	48%	68%	75%	72%	72%	73%	68%	64%

FERTILITY		CARCASE						
Scrotal Size (cm)	Days to Calving	Carc Weight	EMA (sq cm)	Rib Fat (mm)	Rump Fat (mm)	RBV (%)	IMF (%)	Trial Docility
+4.7	-7.3	+78	+6.9	+1.3	+2.0	+2.0	+0.8	-1
78%	49%	66%	57%	63%	66%	59%	65%	61%

STRUCTURAL ASSESSMENT								23-Sep-21	Temp.		
	Front		Back		Front		Back		23-Sep-21		
6		5		6		5		5	4	40	1

INDEX VALUE				Polled Gene	Maturity	Mus Score	EYES	
SSR	NSR	SBM	NBT					Eye Pigment
\$224	\$223	\$219	\$153	PP Homz	Mid	B-		100/100
							4	

Sire: **TOBRUK LENNOX**

STUDBROOK D'ARTAGNION V086 (AI) (I)
 OTAPAWA SPARK 3060 (IMP)
 OTAPAWA SPOT P30

MOUNT DIFFICULT FELLIS Y12 (AI)
 Pine Hill MARITANA A619
 Pine Hill Maritana W575

MOUNT DIFFICULT FELLIS Y12 (AI)
 WIRRUNA DAFFY D1
 MOUNT DIFFICULT LAST DAY A205

Dam: **WIRRUNA VICTORIA G7**

ALLENDALE NATIONAL W168
 WIRRUNA VICTORIA E112
 SOUTH BUKALONG VICTORIA 202



Semen Price
\$60/straw

Black highlight: Ranks with top 5% of breed

Grey highlight: Ranks with top 20% of breed

R355**Wirruna Rockefeller R355****WNAR355****(Wirruna Semen Sires)**

Birth Date: 20-Aug-20
 Society ID: WNAR355
 Horn/Scurs/Poll: Homozygous Poll (Poll Gene test)

- A nice type with excellent B- muscling & length of body - joined to heifers
- The Napier progeny were standouts at carcass scanning - led by R355
- Consider his combination of top 1% muscle & marbling for high MSA Index
- Large testicles, good calving ease for heifers & top 15% 400D growth EBV

*Easy-calve*

Apr 2022 GROUP BREEDPLAN EBV's

CALVING EASE				GROWTH & MATERNAL				
Calving Ease DIR (%)	Calving Ease DTRS (%)	Gestation Length (days)	Birth Weight	200-Day Growth	400-Day Weight	600-Day Weight	Mat Cow Weight	Genetic Milk
+7.8	+6.7	-3.8	+1.6	+33	+66	+81	+62	+19
43%	35%	58%	72%	67%	68%	69%	63%	59%

FERTILITY		CARCASS						
Scrotal Size (cm)	Days to Calving	Carc Weight	EMA (sq cm)	Rib Fat (mm)	Rump Fat (mm)	RBV (%)	IMF (%)	Trial Docility
+3.8	-5.7	+66	+8.6	+2.7	+3.4	+0.1	+3.3	-14
76%	43%	60%	50%	57%	61%	53%	59%	53%

STRUCTURAL ASSESSMENT								23-Sep-21	Temp.
								23-Sep-21	
7	6	6	6	5	5	4	40	2	

INDEX VALUE				Polled Gene	Maturity	Mus Score	EYES	
SSR	NSR	SBM	NBT					Eye Pigment
\$201	\$197	\$207	\$154	PP Homz	Mid	B-		100/100
							4	

Sire: WIRRUNA NAPIER N216

WIRRUNA FLETCHER F214
 WIRRUNA KATNOOK K74
 WIRRUNA VICTORIA G7
 NJW 73S M326 TRUST 100W
 WIRRUNA MABEL K428
 WIRRUNA MABEL F127

Dam: WIRRUNA GOLDEN VANITY K537

WIRRUNA EXPLORER E188
 WIRRUNA HARTWIG H297
 WIRRUNA MIDGE A51
 WIRRUNA FREDDIE F381
 WIRRUNA GOLDEN VANITY H315
 WIRRUNA GOLDEN VANITY E401



Semen Price
\$60/straw

Black highlight: Ranks with top 5% of breed

Grey highlight: Ranks with top 20% of breed

Q036**Wirruna Qantas Q036 (AI)****WNAQ036****(Wirruna Semen Sires)**

Birth Date: 5-Aug-19
 Society ID: WNAQ036
 Horn/Scurs/Poll: Homozygous Poll (Poll Gene test)

- A new Kalimna son to drive herd performance - top \$Index for profit
- Highest fat & 3rd highest marbling scan out of over 200 contemporaries
- Excellent structure & attractive phenotype compliments strong EBV profile
- Used heavily at Wirruna to capture his unique set of breed leading traits

**Easy-calve**

Apr 2022 GROUP BREEDPLAN EBV's

CALVING EASE				GROWTH & MATERNAL				
Calving Ease DIR (%)	Calving Ease DTRS (%)	Gestation Length (days)	Birth Weight	200-Day Growth	400-Day Weight	600-Day Weight	Mat Cow Weight	Genetic Milk
+11.9	+5.4	-8.3	+3.0	+49	+79	+108	+76	+25
69%	51%	90%	92%	88%	79%	80%	72%	65%

FERTILITY		CARCASE						
Scrotal Size (cm)	Days to Calving	Carc Weight	EMA (sq cm)	Rib Fat (mm)	Rump Fat (mm)	RBV (%)	IMF (%)	Trial Docility
+5.3	-7.0	+83	+4.9	+2.9	+4.2	-0.3	+2.6	-12
78%	50%	71%	59%	64%	67%	58%	65%	85%

STRUCTURAL ASSESSMENT						18-Jun-21	Temp.
6	5	5	6	5	5	4	16-Jun-21 44
							2

\$INDEX VALUE				Polled Gene	Maturity	Mus Score	EYES	
SSR	NSR	SBM	NBT					Eye Pigment
\$239	\$229	\$255	\$190	PP Homz	Mid	C+		100/100
							4	

WIRRUNA EXPLORER E188
WIRRUNA HARTWIG H297
WIRRUNA MIDGE A51

Sire: WIRRUNA KALIMNA K326

ARDO HUSTLER 4110 (IMP)
WIRRUNA CORA H303
WIRRUNA CORA D9

MATARIKI HOLY-SMOKE
WIRRUNA KEITH K169
WIRRUNA DIDO F397

Dam: WIRRUNA LETITIA M367

WIRRUNA ECHUCA E99
WIRRUNA LETITIA J135
WIRRUNA LETITIA E4

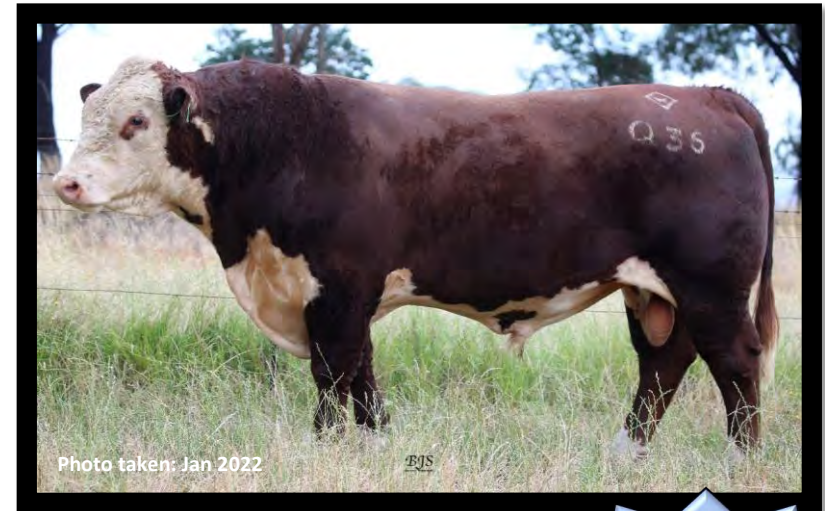


Photo taken: Jan 2022

Semen Price
\$50/straw

Black highlight: Ranks with top 5% of breed

Grey highlight: Ranks with top 20% of breed

Q090**Wirruna Quamby Q090 (ET)****WNAQ090****(Wirruna Semen Sires)**

Birth Date: 9-Aug-19
 Society ID: WNAQ090
 Horn/Scurs/Poll: Homozygous Poll (Poll Gene test)

- Curve-bending EBV profile by Super Sire Matty, out of a proven Donor cow
- Calves born easily & early (Short Gestation) - with good early growth
- He combines high CWT, muscle & marbling to boost carcass performance
- Used over heifers, this fellow achieved top-end EMA scan & weight gains

(NB. NZ Semen rights owned by Shrimpton's Hill Herefords)**Easy-calve**

Apr 2022 GROUP BREEDPLAN EBV's

CALVING EASE				GROWTH & MATERNAL				
Calving Ease DIR (%)	Calving Ease DTRS (%)	Gestation Length (days)	Birth Weight	200-Day Growth	400-Day Weight	600-Day Weight	Mat Cow Weight	Genetic Milk
+10.9	+4.9	-7.0	+3.5	+48	+78	+100	+77	+17
67%	54%	71%	85%	82%	78%	79%	73%	67%

FERTILITY		CARCASS						
Scrotal Size (cm)	Days to Calving	Carc Weight	EMA (sq cm)	Rib Fat (mm)	Rump Fat (mm)	RBV (%)	IMF (%)	Trial Docility
+4.0	-4.8	+80	+5.9	+1.5	+2.2	+1.1	+1.9	+13
78%	51%	71%	62%	66%	69%	61%	68%	76%

STRUCTURAL ASSESSMENT						18-Jun-21	Temp.	
							16-Jun-21 39	
7	6	6	6	5	5	4		1

INDEX VALUE				Polled Gene	Maturity	Mus Score	EYES	
SSR	NSR	SBM	NBT					Eye Pigment
\$218	\$214	\$235	\$177	PP Homz	Mid	C+	4	100/100

Sire: WIRRUNA MATTY M288
 ALLENDALE YACKA
 ALLENDALE ANZAC E114
 ALLENDALE DAWN B22 (AI) (ET)

ELITE 4110 E212
 WIRRUNA CIRCLE H13
 WIRRUNA CIRCLE F31

MOUNT DIFFICULT FELLIS Y12 (AI)
 WIRRUNA DAFFY D1
 MOUNT DIFFICULT LAST DAY A205

Dam: WIRRUNA VICTORIA G7
 ALLENDALE NATIONAL W168
 WIRRUNA VICTORIA E112
 SOUTH BUKALONG VICTORIA 202



Semen Price
\$50/straw

Black highlight: Ranks with top 5% of breed

Grey highlight: Ranks with top 20% of breed

Q100**Wirruna Quality Q100 (AI)****WNAQ100****(Wirruna Semen Sires)**

Birth Date: 9-Aug-19
 Society ID: WNAQ100
 Horn/Scurs/Poll: Homozygous Poll (Poll Gene test)

- Few in the breed can match "Quality Q100" for marbling & B- muscling
- Offers top 5% growth traits, without compromising calving ease traits
- Short gestation length EBV, for early born calves, promotes easier calving
- I rate this Matty son for his high ranking IMF% EBV & \$Index values

(NB. NZ qualified Semen collected)

Apr 2022 GROUP BREEDPLAN EBV's

CALVING EASE				GROWTH & MATERNAL				
Calving Ease DIR (%)	Calving Ease DTRS (%)	Gestation Length (days)	Birth Weight	200-Day Growth	400-Day Weight	600-Day Weight	Mat Cow Weight	Genetic Milk
+9.1	+6.0	-5.2	+5.3	+49	+80	+113	+83	+22
66%	49%	81%	86%	82%	77%	78%	71%	65%

FERTILITY		CARCASE						
Scrotal Size (cm)	Days to Calving	Carc Weight	EMA (sq cm)	Rib Fat (mm)	Rump Fat (mm)	RBV (%)	IMF (%)	Trial Docility
+3.5	-4.1	+72	+5.7	+1.9	+2.4	+0.4	+3.6	+7
78%	46%	69%	58%	63%	66%	57%	65%	75%

STRUCTURAL ASSESSMENT							29-Sep-20	Temp.
							9-Apr-21	
6	5	6	6	5	5	4	39	2

\$INDEX VALUE				Polled Gene	Maturity	Mus Score	EYES	
SSR	NSR	SBM	NBT					Eye Pigment
\$243	\$228	\$256	\$191	PP Homz	Mid	B-		100/100
							4	

Sire: WIRRUNA MATTY M288

ALLENDALE YACKA
 ALLENDALE ANZAC E114
 ALLENDALE DAWN B22 (AI) (ET)

ELITE 4110 E212
 WIRRUNA CIRCLE H13
 WIRRUNA CIRCLE F31

WIRRUNA CHEVIOT C280
 WIRRUNA GABU G134
 SOUTH BUKALONG VICTORIA 202

Dam: WIRRUNA JANETTE K54

WIRRUNA FLETCHER F214
 WIRRUNA JANETTE H276
 WIRRUNA JANETTE F166



Semen Price
\$50/straw

Black highlight: Ranks with top 5% of breed

Grey highlight: Ranks with top 20% of breed

Q135**Wirruna Quambone Q135 (AI)****WNAQ135****(Wirruna Semen Sires)**

Birth Date: 11-Aug-19
 Society ID: WNAQ135
 Horn/Scurs/Poll: Homozygous Poll (Poll Gene test)

- Techno son with curve bending growth, positive CE and moderate MCW
- Improve carcase attributes with top 1% CWT, IMF% & top 5% EMA EBVs
- Maternal strength via proven Dam, producing 3 Wirruna sires out of 7 calves
- I admire this fellows body length, shape & profitable balance of traits



Apr 2022 GROUP BREEDPLAN EBV's

CALVING EASE				GROWTH & MATERNAL				
Calving Ease DIR (%)	Calving Ease DTRS (%)	Gestation Length (days)	Birth Weight	200-Day Growth	400-Day Weight	600-Day Weight	Mat Cow Weight	Genetic Milk
+8.2	+7.1	-2.0	+4.1	+44	+79	+105	+72	+30
65%	53%	81%	88%	81%	76%	78%	71%	65%

FERTILITY		CARCASE						
Scrotal Size (cm)	Days to Calving	Carc Weight	EMA (sq cm)	Rib Fat (mm)	Rump Fat (mm)	RBV (%)	IMF (%)	Trial Docility
+2.5	-5.7	+79	+6.1	+1.6	+1.4	+0.9	+2.4	+3
78%	50%	68%	58%	63%	66%	59%	64%	76%

STRUCTURAL ASSESSMENT							18-Jun-21	Temp.
							16-Jun-21	
6	6	6	6	5	5	4	41	1

INDEX VALUE				Polled Gene	Maturity	Mus Score	EYES	
SSR	NSR	SBM	NBT					Eye Pigment
\$229	\$207	\$239	\$172	PP Homz	Mid	C+		100/100

Sire: KOANUI TECHNO 3062

KOANUI UNANIMOUS 7174
 KOANUI UNANIMOUS 0408
 KOANUI GIRLIE 3048

LEELANDS X-TENSION 293
 KOANUI BLUSH 6455
 KOANUI BLUSH 3304

QUAMBY PLAINS STOCKMASTER Y118
 WIRRUNA FLETCHER F214
 WIRRUNA LAST DAY B16 (H)

Dam: WIRRUNA LAST DAY H364

SOUTH BUKALONG WALLACE 2
 WIRRUNA LAST DAY F14
 WIRRUNA LAST DAY D34



Black highlight: Ranks with top 5% of breed

Grey highlight: Ranks with top 20% of breed

Q266**Wirruna Querido Q266 (AI)****WNAQ266****(Wirruna Semen Sires)**

Birth Date: 20-Aug-19
 Society ID: WNAQ266
 Horn/Scurs/Poll: Homozygous Poll (Poll Gene test)

- Highly rated Wirruna Sire by EFB Validated - the highest marbling US Sire
- He carries both carcass quantity (top 5% EMA) & quality (top 1% IMF%)
- Offers strong calving ease, good early growth & moderate MCW EBVs
- I think this fellow is very well put together & offers outcross genetics

*Easy-calve*

Apr 2022 GROUP BREEDPLAN EBV's

CALVING EASE				GROWTH & MATERNAL				
Calving Ease DIR (%)	Calving Ease DTRS (%)	Gestation Length (days)	Birth Weight	200-Day Growth	400-Day Weight	600-Day Weight	Mat Cow Weight	Genetic Milk
+8.9	+5.6	+0.5	+4.2	+48	+77	+103	+59	+19
62%	41%	76%	86%	82%	76%	78%	69%	61%

FERTILITY		CARCASS						
Scrotal Size (cm)	Days to Calving	Carc Weight	EMA (sq cm)	Rib Fat (mm)	Rump Fat (mm)	RBV (%)	IMF (%)	Trial Docility
+3.4	-5.2	+70	+6.8	+1.8	+1.3	+0.0	+3.2	+6
78%	41%	66%	55%	60%	62%	54%	61%	75%

STRUCTURAL ASSESSMENT							18-Jun-21	Temp.
							16-Jun-21	
7	6	5	6	5	5	3	36	2

INDEX VALUE				Polled Gene	Maturity	Mus Score	EYES	
SSR	NSR	SBM	NBT					Eye Pigment
\$241	\$221	\$246	\$174	PP Homz	Mid	C+		100/100
							4	

EFBEEF FOREMOST U208 (IMP)
 EFBEEF TFL U208 TESTED X651
 EFBEEF P606 MABEL R415

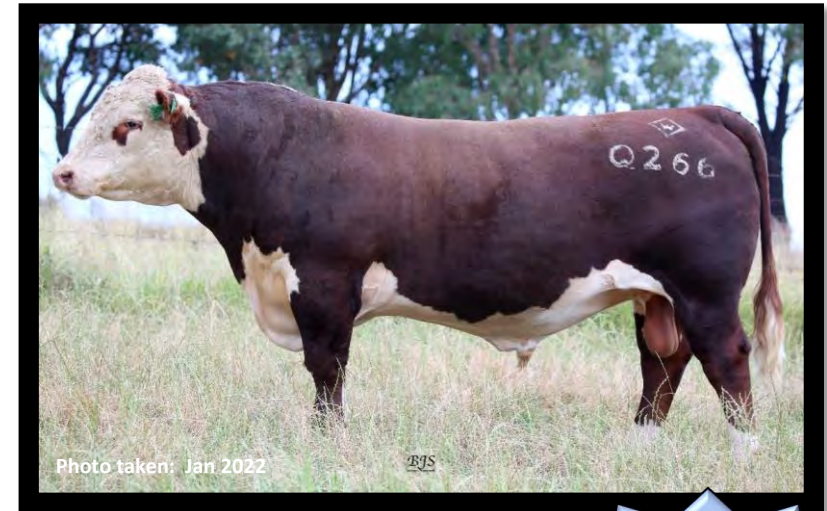
Sire: EFBEEF BR VALIDATED B413

MSU TCF REVOLUTION 4R
 EFBEEF 4R THYRA Y865
 EFBEEF N014 THYRA S645

QUAMBY PLAINS STOCKMASTER Y118
 WIRRUNA FLETCHER F214
 WIRRUNA LAST DAY B16 (H)

Dam: CO-OP5 URSULA J427

WIRRUNA COMET C90
 WIRRUNA URSULA E278
 WIRRUNA URSULA A241



Semen Price
\$50/straw

Black highlight: Ranks with top 5% of breed

Grey highlight: Ranks with top 20% of breed

Q281**Wirruna Quarter Back Q281****WNAQ281****(Wirruna Semen Sires)**

Birth Date: 22-Aug-19
 Society ID: WNAQ281
 Horn/Scurs/Poll: Homozygous Poll (Poll Gene test)

- A HAL Super Sire for trait balance & proven performance
- Carcase weight, Eye Muscle Area & Marbling in top 5% of breed
- Top 1% ranking for \$Index values reflects excellent profit driving traits
- Note his tight sheath, docility & rich dark coat

**Easy-calve**

Apr 2022 GROUP BREEDPLAN EBV's

CALVING EASE				GROWTH & MATERNAL				
Calving Ease DIR (%)	Calving Ease DTRS (%)	Gestation Length (days)	Birth Weight	200-Day Growth	400-Day Weight	600-Day Weight	Mat Cow Weight	Genetic Milk
+10.1	+2.4	-3.9	+3.8	+40	+80	+110	+76	+18
61%	43%	66%	84%	79%	73%	74%	67%	58%

FERTILITY		CARCASE						
Scrotal Size (cm)	Days to Calving	Carc Weight	EMA (sq cm)	Rib Fat (mm)	Rump Fat (mm)	RBV (%)	IMF (%)	Trial Docility
+5.6	-6.1	+78	+6.5	+1.8	+2.5	+0.9	+2.1	+7
76%	41%	63%	49%	56%	60%	52%	57%	72%

STRUCTURAL ASSESSMENT							29-Sep-20	Temp.
							9-Apr-21	
6	5	5	6	5	5	4	41	1

\$INDEX VALUE				Polled Gene	Maturity	Mus Score	EYES	
SSR	NSR	SBM	NBT					Eye Pigment
\$244	\$231	\$251	\$183	PP Homz	Mid	C+		100/100
							4	

Sire: WIRRUNA NEW ERA N068

ALLENDALE YACKA
 ALLENDALE ANZAC E114
 ALLENDALE DAWN B22 (AI) (ET)

WIRRUNA CANDIDATE C118
 WIRRUNA CORA E319
 WIRRUNA CORA B38

NITHDALE JACKAL 090029
 ORARI GORGE MISCHIEF 120083
 NITHDALE LESLIE 090020

Dam: WIRRUNA CIRCLE N138

WIRRUNA JANSEN J143
 WIRRUNA CIRCLE L421
 WIRRUNA CIRCLE H13



Semen Price
\$50/straw

Black highlight: Ranks with top 5% of breed
 Grey highlight: Ranks with top 20% of breed

April 2022 Hereford BREEDPLAN - Percentile Bands for all 2020 born animals

Use this table as a guide to compare individual animals with the current genetic level of the breed

	Calv-Ease		Birth		Growth					Fert		Carcase					Extra		Indexes				
	Dir	Dtrs	GL	Bwt	200	400	600	Mwt	Milk	SS	DC	Cwt	EMA	Rib	P8	RBY	IMF	Doc	NFI	SSR	NSR	SBM	NBT
	%		days	kg					cm	days	kg	sq.cm	mm		%	kg/day		\$					
High 1%	+12.5	+9.0	-6.6	-1.5	+49	+81	+117	+111	+28	+4.3	-6.7	+77	+7.4	+2.7	+3.8	+2.6	+2.3	+21	-0.36	+215	+204	+223	+163
High 5%	+10.4	+7.2	-4.0	+0.2	+44	+73	+104	+97	+24	+3.5	-5.5	+69	+6.2	+2.1	+2.9	+2.0	+1.7	+17	-0.21	+193	+183	+201	+146
High 10%	+9.0	+6.1	-3.0	+1.1	+42	+69	+98	+91	+23	+3.2	-5.0	+65	+5.6	+1.8	+2.4	+1.7	+1.4	+14	-0.15	+179	+169	+187	+137
High 15%	+7.9	+5.4	-2.4	+1.7	+40	+67	+94	+86	+22	+2.9	-4.6	+63	+5.2	+1.6	+2.1	+1.5	+1.2	+12	-0.11	+170	+158	+177	+129
High 20%	+7.0	+4.8	-2.0	+2.1	+39	+65	+91	+82	+21	+2.8	-4.3	+60	+4.8	+1.5	+1.9	+1.3	+1.1	+10	-0.08	+163	+151	+168	+123
High 25%	+6.1	+4.3	-1.6	+2.5	+38	+63	+89	+80	+20	+2.6	-4.1	+59	+4.6	+1.3	+1.7	+1.2	+1.0	+9	-0.05	+156	+143	+160	+117
High 30%	+5.3	+3.9	-1.4	+2.9	+37	+61	+86	+77	+19	+2.5	-3.9	+57	+4.4	+1.2	+1.5	+1.1	+0.9	+7	-0.03	+150	+137	+154	+113
High 35%	+4.6	+3.4	-1.1	+3.2	+36	+60	+84	+74	+19	+2.4	-3.6	+55	+4.2	+1.1	+1.4	+1.0	+0.8	+6	-0.01	+145	+131	+148	+109
High 40%	+3.9	+3.0	-0.9	+3.5	+35	+58	+82	+71	+18	+2.3	-3.4	+54	+4.0	+1.0	+1.2	+0.9	+0.7	+5	+0.00	+140	+127	+143	+105
High 45%	+3.2	+2.6	-0.7	+3.8	+34	+57	+80	+69	+17	+2.2	-3.3	+53	+3.8	+0.9	+1.1	+0.8	+0.6	+4	+0.01	+136	+122	+138	+102
50%	+2.5	+2.2	-0.5	+4.1	+33	+56	+78	+67	+17	+2.1	-3.1	+51	+3.7	+0.8	+1.0	+0.7	+0.5	+3	+0.02	+132	+117	+133	+98
Low 45%	+1.8	+1.7	-0.3	+4.4	+33	+54	+76	+64	+16	+2.0	-2.9	+50	+3.5	+0.7	+0.8	+0.7	+0.5	+2	+0.03	+127	+113	+128	+95
Low 40%	+1.2	+1.3	-0.1	+4.6	+32	+53	+74	+62	+16	+1.9	-2.7	+48	+3.3	+0.6	+0.7	+0.6	+0.4	+1	+0.04	+123	+108	+123	+91
Low 35%	+0.5	+0.9	+0.1	+4.9	+31	+51	+72	+59	+15	+1.8	-2.5	+47	+3.2	+0.5	+0.5	+0.5	+0.3	+0	+0.05	+118	+103	+118	+87
Low 30%	-0.2	+0.4	+0.3	+5.2	+30	+50	+70	+56	+14	+1.7	-2.2	+45	+3.0	+0.4	+0.4	+0.4	+0.2	-1	+0.07	+113	+98	+112	+83
Low 25%	-0.9	-0.1	+0.5	+5.5	+29	+48	+67	+53	+14	+1.6	-2.0	+44	+2.8	+0.3	+0.2	+0.3	+0.2	-2	+0.08	+108	+93	+106	+79
Low 20%	-1.8	-0.6	+0.8	+5.8	+27	+46	+64	+50	+13	+1.4	-1.7	+42	+2.7	+0.2	+0.1	+0.2	+0.1	-3	+0.09	+103	+87	+100	+74
Low 15%	-2.8	-1.2	+1.0	+6.2	+26	+44	+61	+46	+12	+1.3	-1.4	+40	+2.4	+0.0	-0.1	+0.0	+0.0	-5	+0.11	+96	+80	+93	+69
Low 10%	-4.0	-2.0	+1.4	+6.6	+24	+41	+57	+40	+11	+1.1	-1.1	+37	+2.2	-0.2	-0.4	-0.1	-0.1	-7	+0.13	+87	+72	+84	+62
Low 5%	-6.0	-3.2	+2.0	+7.3	+22	+37	+50	+32	+10	+0.8	-0.6	+33	+1.8	-0.5	-0.8	-0.4	-0.3	-12	+0.17	+75	+60	+71	+53
Low 1%	-10.1	-5.6	+3.4	+8.5	+15	+25	+34	+12	+7	+0.1	+0.2	+23	+1.0	-1.1	-1.7	-1.0	-0.7	-23	+0.28	+48	+36	+42	+32