



**WIRRUNA**  
poll herefords

Contact: Ian Locke  
Wirruna Poll Hereford Stud  
"Spring Valley" Holbrook  
NSW 2644

Phone: (02) 60362877  
Mobile: (0408) 637 267  
Email: [office@wirruna.com](mailto:office@wirruna.com)  
Website: [www.wirruna.com](http://www.wirruna.com)

# WIRRUNA POLL HEREFORDS

## SEMEN SIREs

*Young Guns*

*2022*



Wirruna Poll Hereford Stud  
IAN & DIANA LOCKE  
"Spring Valley"  
Holbrook NSW 2644

ph. 02 6036 2877  
mb. 0408 637 267  
email office@wirruna.com  
Website www.wirruna.com

# Wirruna Semen Sires

*Young Guns*

Feb 2022 GROUP BREEDPLAN EBV's																				Black highlight: Ranks with top 5% of breed Grey highlight: Ranks with top 20% of breed					
Tag No	Animal Tag	Sire	CALVING EASE				GROWTH & MATERNAL					FERTILITY		CARCASE DATA EBV's							INDEX VALUE				Semen Price/straw
			CED	CEM	GL	BW	200	400	600	MCW	Milk	SS	DC	CW	EMA	Rib Fat	P8 Fat	RBY	IMF	Trial Docility	SSR	NSR	SBM	NBT	
R084	Wirruna Romeo R084 (AI)	Glentrevor Trust N909	+11.8	+9.5	-5.7	+2.0	+45	+78	+106	+88	+20	+3.3	-2.7	+78	+4.0	+0.7	+0.7	+0.7	+1.7	+13	\$210	\$198	\$241	\$181	\$60
R105	Wirruna Real Deal R105 (AI)	Wirruna Kalimna K326	+7.7	+7.1	-4.9	+4.0	+45	+77	+100	+61	+20	+3.4	-8.7	+74	+5.8	+2.5	+2.6	+0.7	+2.6	+7	\$254	\$241	\$246	\$168	\$60
R121	Wirruna Ryan R121 (AI)	Wirruna Ledger L285	+7.0	+5.6	-4.5	+4.8	+51	+85	+115	+89	+22	+3.5	-4.7	+81	+6.4	+0.9	+0.6	+1.1	+2.4	+12	\$234	\$216	\$242	\$177	\$60
R203	Wirruna Redgate R203 (ET)	Tobruk Lennox	+5.1	+5.7	-1.7	+5.0	+48	+80	+100	+83	+14	+4.7	-7.3	+78	+6.8	+1.4	+2.0	+2.0	+0.7	-2	\$220	\$220	\$214	\$151	\$60
R355	Wirruna Rockefeller R355	Wirruna Napier N216	+7.5	+6.7	-4.0	+1.6	+33	+67	+84	+64	+19	+3.8	-5.7	+68	+8.7	+2.6	+3.3	+0.1	+3.3	-15	\$205	\$200	\$210	\$156	\$60
Q036	Wirruna Qantas Q036 (AI)	Wirruna Kalimna K326	+11.6	+5.2	-8.3	+3.4	+48	+79	+109	+78	+25	+5.1	-6.9	+81	+4.7	+2.7	+4.0	-0.3	+2.6	-9	\$238	\$226	\$254	\$189	\$50
Q090	Wirruna Quamby Q090 (ET)	Wirruna Matty M288	+11.2	+6.4	-6.9	+3.0	+46	+76	+96	+72	+14	+4.0	-5.0	+78	+6.0	+1.6	+2.3	+1.1	+2.0	+12	\$222	\$222	\$238	\$177	\$50
Q100	Wirruna Quality Q100 (AI)	Wirruna Matty M288	+9.6	+7.4	-5.9	+4.7	+46	+77	+107	+79	+20	+3.5	-4.4	+70	+5.7	+1.9	+2.4	+0.3	+3.7	+4	\$239	\$224	\$252	\$186	\$50
Q135	Wirruna Quambone Q135 (AI)	Koanui Techno 3062	+9.0	+7.3	-2.0	+3.8	+43	+78	+104	+71	+28	+2.5	-5.7	+78	+6.1	+1.6	+1.3	+1.0	+2.4	+4	\$232	\$211	\$242	\$174	\$50
Q266	Wirruna Querido Q266 (AI)	EFB Validated B413	+9.1	+5.6	+0.5	+4.0	+46	+74	+100	+60	+19	+3.4	-5.2	+67	+6.8	+1.8	+1.3	+0.0	+3.2	+3	\$233	\$214	\$239	\$170	\$50
Q281	Wirruna Quarter Back Q281	Wirruna New Era N068	+10.4	+2.8	-3.8	+3.3	+36	+77	+105	+73	+16	+5.5	-6.0	+74	+6.5	+1.8	+2.6	+0.9	+2.1	+11	\$239	\$229	\$247	\$180	\$50
Breed Ave. '20 drop			+2.5	+2.1	-0.7	+4.0	+33	+55	+78	+66	+17	+2.1	-3.1	+51	+3.8	+0.8	+1.0	+0.8	+0.6	+3	\$133	\$119	\$135	\$99	+ GST

## Improve your beef herd profitability with Wirruna Poll Hereford genetics .....

- Disciplined Approach to Breeding**  
*All cows must raise live unassisted calf at 2 yrs and rejoin annually in strict 6 week joining period to remain in herd*
- High level Performance Program**  
*All cattle assessed in large management groups and run at high stocking rates to screen commercially acceptable genetics  
 Recognised as one of the leading Breedplan performance recorded herds in Australia*
- Breed leading genetics**  
*All 2021 Wirruna born calves average in top 5% of the breed for all \$Indices*

**R084****Wirruna Romeo R084 (AI)****WNAR084****(Wirruna Semen Sires)**

Birth Date: 5-Aug-20  
 Society ID: WNAR084  
 Horn/Scurs/Poll: Homozygous Poll (Poll Gene test)

- A stylish curve-bending sire by Glentrevor Trust N909 - used over heifers
- He carries exceptional growth from a strong calving ease base (top 5%)
- Named 'Romeo' - his paddock performance displays high libido behaviour
- He features excellent structure, docility, proven fertility & top 5% \$Indices

*Easy-calve*

Feb 2022 GROUP BREEDPLAN EBV's

CALVING EASE				GROWTH & MATERNAL				
Calving Ease DIR (%)	Calving Ease DTRS (%)	Gestation Length (days)	Birth Weight	200-Day Growth	400-Day Weight	600-Day Weight	Mat Cow Weight	Genetic Milk
<b>+11.8</b>	<b>+9.5</b>	<b>-5.7</b>	<b>+2.0</b>	<b>+45</b>	<b>+78</b>	<b>+106</b>	<b>+88</b>	<b>+20</b>
47%	35%	75%	72%	69%	69%	69%	62%	52%

FERTILITY		CARCASE						
Scrotal Size (cm)	Days to Calving	Carc Weight	EMA (sq cm)	Rib Fat (mm)	Rump Fat (mm)	RBV (%)	IMF (%)	Trial Docility
<b>+3.3</b>	<b>-2.7</b>	<b>+78</b>	<b>+4.0</b>	<b>+0.7</b>	<b>+0.7</b>	<b>+0.7</b>	<b>+1.7</b>	<b>+13</b>
77%	40%	61%	52%	58%	62%	53%	61%	50%

STRUCTURAL ASSESSMENT							23-Sep-21	Temp.
							23-Sep-21	
6	5	5	5	5	5	4	37	1

INDEX VALUE				Polled Gene	Maturity	Mus Score	EYES	
SSR	NSR	SBM	NBT					Eye Pigment
<b>\$210</b>	<b>\$198</b>	<b>\$241</b>	<b>\$181</b>	<b>PP</b> Homz	<b>Mid</b>	<b>C+</b>		<b>100/100</b>
							4	

*NJW 73S M326 TRUST 100W*  
 ELITE TRUST K215  
 ELITE RUTH 0219 D163

**Sire: GLENTREVOR TRUST N909**

*SOUTH BUKALONG WALLACE 2*  
 GLENTREVOR SIRIKIT J504  
 GLENTREVOR SIRIKIT F252

*ALLENDALE ANZAC E114*  
 WIRRUNA MATTY M288  
 WIRRUNA CIRCLE H13

**Dam: WIRRUNA GOLDEN VANITY P412**

*MOUNT DIFFICULT CADBURY*  
 WIRRUNA GOLDEN VANITY M156  
 WIRRUNA GOLDEN VANITY J342



**Semen Price**  
**\$60/straw**

Black highlight: Ranks with top 5% of breed  
 Grey highlight: Ranks with top 20% of breed

**R105****Wirruna Real Deal R105 (AI)****WNAR105****(Wirruna Semen Sires)**

Birth Date: 5-Aug-20  
 Society ID: WNAR105  
 Horn/Scurs/Poll: Homozygous Poll (Poll Gene test)

- The standout Kalimna son with curve-bending growth & strong marbling
- I like his balance of CE, growth, milk, fertility & positive carcase attributes
- One of the top bulls in the breed for \$Index values - No 1 'R' Bull for NSR
- A first choice Wirruna joining sire for his soundness & outstanding phenotype

*Easy-calve*

Feb 2022 GROUP BREEDPLAN EBV's

CALVING EASE				GROWTH & MATERNAL				
Calving Ease DIR (%)	Calving Ease DTRS (%)	Gestation Length (days)	Birth Weight	200-Day Growth	400-Day Weight	600-Day Weight	Mat Cow Weight	Genetic Milk
<b>+7.7</b>	<b>+7.1</b>	<b>-4.9</b>	<b>+4.0</b>	<b>+45</b>	<b>+77</b>	<b>+100</b>	<b>+61</b>	<b>+20</b>
54%	46%	76%	73%	70%	71%	72%	68%	63%

FERTILITY		CARCASE						
Scrotal Size (cm)	Days to Calving	Carc Weight	EMA (sq cm)	Rib Fat (mm)	Rump Fat (mm)	RBV (%)	IMF (%)	Trial Docility
<b>+3.4</b>	<b>-8.7</b>	<b>+74</b>	<b>+5.8</b>	<b>+2.5</b>	<b>+2.6</b>	<b>+0.7</b>	<b>+2.6</b>	<b>+7</b>
78%	50%	67%	60%	65%	67%	58%	65%	57%

STRUCTURAL ASSESSMENT							23-Sep-21	Temp.
							23-Sep-21	
6	6	5	6	5	5	4	38	2

\$INDEX VALUE				Polled Gene	Maturity	Mus Score	EYES	
SSR	NSR	SBM	NBT					Eye Pigment
<b>\$254</b>	<b>\$241</b>	<b>\$246</b>	<b>\$168</b>	<b>PP</b> Homz	<b>Mid</b>	<b>C+</b>		<b>100/100</b>
							4	

**Sire: WIRRUNA KALIMNA K326**

WIRRUNA EXPLORER E188  
 WIRRUNA HARTWIG H297  
 WIRRUNA MIDGE A51

ARDO HUSTLER 4110 (IMP)  
 WIRRUNA CORA H303  
 WIRRUNA CORA D9

QUAMBY PLAINS STOCKMASTER Y118  
 WIRRUNA FLETCHER F214  
 WIRRUNA LAST DAY B16 (H)

**Dam: WIRRUNA GOLDEN VANITY N085**

WIRRUNA JAVA J80  
 WIRRUNA GOLDEN VANITY L453  
 WIRRUNA GOLDEN VANITY H139



**Semen Price**  
**\$60/straw**

Black highlight: Ranks with top 5% of breed

Grey highlight: Ranks with top 20% of breed

**R121****Wirruna Ryan R121 (AI)****WNAR121****(Wirruna Semen Sires)**

Birth Date: 6-Aug-20  
 Society ID: WNAR121  
 Horn/Scurs/Poll: Homozygous Poll (Poll Gene test)

- A Wirruna sire achieving top-end muscle & marbling scan data
- He combines the valuable trait combination of top 5% EMA & top 1% IMF%
- He offers top 1% early growth traits, without compromising the CE traits
- Use to boost growth, carcass performance & profit potential (top 1% \$Index)



Feb 2022 GROUP BREEDPLAN EBV's

CALVING EASE				GROWTH & MATERNAL				
Calving Ease DIR (%)	Calving Ease DTRS (%)	Gestation Length (days)	Birth Weight	200-Day Growth	400-Day Weight	600-Day Weight	Mat Cow Weight	Genetic Milk
+7.0	<b>+5.6</b>	<b>-4.5</b>	+4.8	<b>+51</b>	<b>+85</b>	<b>+115</b>	<b>+89</b>	<b>+22</b>
50%	43%	75%	72%	68%	68%	69%	64%	58%

FERTILITY		CARCASS						
Scrotal Size (cm)	Days to Calving	Carc Weight	EMA (sq cm)	Rib Fat (mm)	Rump Fat (mm)	RBV (%)	IMF (%)	Trial Docility
<b>+3.5</b>	<b>-4.7</b>	<b>+81</b>	<b>+6.4</b>	+0.9	+0.6	+1.1	<b>+2.4</b>	<b>+12</b>
77%	45%	61%	53%	58%	62%	54%	60%	56%

STRUCTURAL ASSESSMENT							23-Sep-21	Temp.
							23-Sep-21	
6	6	6	5	5	5	4	35	2

\$INDEX VALUE				Polled Gene	Maturity	Mus Score	EYES	
SSR	NSR	SBM	NBT					Eye Pigment
<b>\$234</b>	<b>\$216</b>	<b>\$242</b>	<b>\$177</b>	<b>PP</b> Homz	Mid	C+		100/100
							4	

Sire: **WIRRUNA LEDGER L285**

ALLENDALE YACKA  
 ALLENDALE ANZAC E114  
 ALLENDALE DAWN B22 (AI) (ET)

GH ADAMS TARGET 5S (IMP)  
 WIRRUNA DOREEN G115  
 WIRRUNA DOREEN A37

QUAMBY PLAINS STOCKMASTER Y118  
 WIRRUNA FLETCHER F214  
 WIRRUNA LAST DAY B16 (H)

Dam: **WIRRUNA CIRCLE N057**

ELITE 4110 E212  
 WIRRUNA CIRCLE L81  
 WIRRUNA CIRCLE F31



Black highlight: Ranks with top 5% of breed

Grey highlight: Ranks with top 20% of breed

**R203****Wirruna Redgate R203 (ET)****WNAR203****(Wirruna Semen Sires)**

Birth Date: 9-Aug-20  
 Society ID: WNAR203  
 Horn/Scurs/Poll: Homozygous Poll (Poll Gene test)

- A classy & well-muscled Lennox son out of a highly proven donor cow
- Offers plenty of growth - top 5% for 200D & 400D, top 1% CWT EBVs
- A B- muscle pattern supported by top-end EMA & RBV% EBVs
- Note his large testicles combined with high fertility genes - top 1% SS & DtC



Feb 2022 GROUP BREEDPLAN EBV's

CALVING EASE				GROWTH & MATERNAL				
Calving Ease DIR (%)	Calving Ease DTRS (%)	Gestation Length (days)	Birth Weight	200-Day Growth	400-Day Weight	600-Day Weight	Mat Cow Weight	Genetic Milk
+5.1	<b>+5.7</b>	-1.7	+5.0	<b>+48</b>	<b>+80</b>	<b>+100</b>	<b>+83</b>	+14
55%	48%	68%	75%	72%	72%	73%	68%	63%

FERTILITY		CARCASE						
Scrotal Size (cm)	Days to Calving	Carc Weight	EMA (sq cm)	Rib Fat (mm)	Rump Fat (mm)	RBV (%)	IMF (%)	Trial Docility
<b>+4.7</b>	<b>-7.3</b>	<b>+78</b>	<b>+6.8</b>	<b>+1.4</b>	<b>+2.0</b>	<b>+2.0</b>	+0.7	-2
78%	48%	65%	57%	62%	66%	58%	64%	60%

STRUCTURAL ASSESSMENT								23-Sep-21	Temp.	
								40		1
6	5	6	5	5	5	4				

INDEX VALUE				Polled Gene	Maturity	Mus Score	EYES	
SSR	NSR	SBM	NBT					Eye Pigment
<b>\$220</b>	<b>\$220</b>	<b>\$214</b>	<b>\$151</b>	<b>PP</b> Homz	Mid	B-		100/100
							4	

Sire: **TOBRUK LENNOX**

STUDBROOK D'ARTAGNION V086 (AI) (I  
 OTAPAWA SPARK 3060 (IMP)  
 OTAPAWA SPOT P30

MOUNT DIFFICULT FELLIS Y12 (AI)  
 Pine Hill MARITANA A619  
 Pine Hill Maritana W575

MOUNT DIFFICULT FELLIS Y12 (AI)  
 WIRRUNA DAFFY D1  
 MOUNT DIFFICULT LAST DAY A205

Dam: **WIRRUNA VICTORIA G7**

ALLENDALE NATIONAL W168  
 WIRRUNA VICTORIA E112  
 SOUTH BUKALONG VICTORIA 202



Black highlight: Ranks with top 5% of breed

Grey highlight: Ranks with top 20% of breed

**R355****Wirruna Rockefeller R355****WNAR355****(Wirruna Semen Sires)**

Birth Date: 20-Aug-20  
 Society ID: WNAR355  
 Horn/Scurs/Poll: Homozygous Poll (Poll Gene test)

- A nice type with excellent B- muscling & length of body - joined to heifers
- The Napier progeny were standouts at carcass scanning - led by R355
- Consider his combination of top 1% muscle & marbling for high MSA Index
- Large testicles, good calving ease for heifers & top 15% 400D growth EBV

*Easy-calve*

Feb 2022 GROUP BREEDPLAN EBV's

CALVING EASE				GROWTH & MATERNAL				
Calving Ease DIR (%)	Calving Ease DTRS (%)	Gestation Length (days)	Birth Weight	200-Day Growth	400-Day Weight	600-Day Weight	Mat Cow Weight	Genetic Milk
<b>+7.5</b>	<b>+6.7</b>	<b>-4.0</b>	<b>+1.6</b>	+33	<b>+67</b>	+84	+64	+19
43%	35%	58%	72%	67%	67%	69%	63%	56%

FERTILITY		CARCASS						
Scrotal Size (cm)	Days to Calving	Carc Weight	EMA (sq cm)	Rib Fat (mm)	Rump Fat (mm)	RBV (%)	IMF (%)	Trial Docility
<b>+3.8</b>	<b>-5.7</b>	<b>+68</b>	<b>+8.7</b>	<b>+2.6</b>	<b>+3.3</b>	+0.1	<b>+3.3</b>	-15
76%	43%	60%	50%	57%	61%	53%	59%	53%

STRUCTURAL ASSESSMENT						23-Sep-21	Temp.	
7	6	6	6	5	5	4	40	
								2

INDEX VALUE				Polled Gene	Maturity	Mus Score	EYES	
SSR	NSR	SBM	NBT					Eye Pigment
<b>\$205</b>	<b>\$200</b>	<b>\$210</b>	<b>\$156</b>	<b>PP</b> Homz	<b>Mid</b>	<b>B-</b>		<b>100/100</b>
							4	

**Sire: WIRRUNA NAPIER N216**

WIRRUNA FLETCHER F214  
 WIRRUNA KATNOOK K74  
 WIRRUNA VICTORIA G7

NJW 73S M326 TRUST 100W  
 WIRRUNA MABEL K428  
 WIRRUNA MABEL F127

WIRRUNA EXPLORER E188  
 WIRRUNA HARTWIG H297  
 WIRRUNA MIDGE A51

**Dam: WIRRUNA GOLDEN VANITY K537**

WIRRUNA FREDDIE F381  
 WIRRUNA GOLDEN VANITY H315  
 WIRRUNA GOLDEN VANITY E401



**Semen Price**  
**\$60/straw**

Black highlight: Ranks with top 5% of breed

Grey highlight: Ranks with top 20% of breed

**Q036****Wirruna Qantas Q036 (AI)****WNAQ036****(Wirruna Semen Sires)**

Birth Date: 5-Aug-19  
 Society ID: WNAQ036  
 Horn/Scurs/Poll: Homozygous Poll (Poll Gene test)

- A new Kalimna son to drive herd performance - top \$Index for profit
- Highest fat & 3rd highest marbling scan out of over 200 contemporaries
- Excellent structure & attractive phenotype compliments strong EBV profile
- Used heavily at Wirruna to capture his unique set of breed leading traits

**Easy-calve**

Feb 2022 GROUP BREEDPLAN EBV's

CALVING EASE				GROWTH & MATERNAL				
Calving Ease DIR (%)	Calving Ease DTRS (%)	Gestation Length (days)	Birth Weight	200-Day Growth	400-Day Weight	600-Day Weight	Mat Cow Weight	Genetic Milk
<b>+11.6</b>	<b>+5.2</b>	<b>-8.3</b>	+3.4	<b>+48</b>	<b>+79</b>	<b>+109</b>	+78	<b>+25</b>
69%	51%	90%	92%	79%	76%	78%	72%	63%

FERTILITY		CARCASE						
Scrotal Size (cm)	Days to Calving	Carc Weight	EMA (sq cm)	Rib Fat (mm)	Rump Fat (mm)	RBV (%)	IMF (%)	Trial Docility
<b>+5.1</b>	<b>-6.9</b>	<b>+81</b>	+4.7	<b>+2.7</b>	<b>+4.0</b>	-0.3	<b>+2.6</b>	-9
78%	49%	67%	59%	64%	67%	58%	65%	56%

STRUCTURAL ASSESSMENT						18-Jun-21	Temp.
6	5	5	6	5	5	4	2

INDEX VALUE				Polled Gene	Maturity	Mus Score	EYES	
SSR	NSR	SBM	NBT					Eye Pigment
<b>\$238</b>	<b>\$226</b>	<b>\$254</b>	<b>\$189</b>	<b>PP</b> Homz	Mid	C+		100/100

**Sire: WIRRUNA KALIMNA K326**  
 WIRRUNA EXPLORER E188  
 WIRRUNA HARTWIG H297  
 WIRRUNA MIDGE A51  
 ARDO HUSTLER 4110 (IMP)  
 WIRRUNA CORA H303  
 WIRRUNA CORA D9  
 MATARIKI HOLY-SMOKE  
 WIRRUNA KEITH K169  
 WIRRUNA DIDO F397  
**Dam: WIRRUNA LETITIA M367**  
 WIRRUNA ECHUCA E99  
 WIRRUNA LETITIA J135  
 WIRRUNA LETITIA E4



Photo taken: Jan 2022

**Semen Price**  
**\$50/straw**

Black highlight: Ranks with top 5% of breed

Grey highlight: Ranks with top 20% of breed



**Q090****Wirruna Quamby Q090 (ET)****WNAQ090****(Wirruna Semen Sires)**

Birth Date: 9-Aug-19  
 Society ID: WNAQ090  
 Horn/Scurs/Poll: Homozygous Poll (Poll Gene test)

- Curve-bending EBV profile by Super Sire Matty, out of a proven Donor cow
- Calves born easily & early (Short Gestation) - with good early growth
- He combines high CWT, muscle & marbling to boost carcase performance
- Used over heifers, this fellow achieved top-end EMA scan & weight gains

*(NB. NZ Semen rights owned by Shrimpton's Hill Herefords)***Easy-calve**

Feb 2022 GROUP BREEDPLAN EBV's

CALVING EASE				GROWTH & MATERNAL				
Calving Ease DIR (%)	Calving Ease DTRS (%)	Gestation Length (days)	Birth Weight	200-Day Growth	400-Day Weight	600-Day Weight	Mat Cow Weight	Genetic Milk
<b>+11.2</b>	<b>+6.4</b>	<b>-6.9</b>	+3.0	<b>+46</b>	<b>+76</b>	<b>+96</b>	+72	+14
67%	53%	71%	85%	78%	77%	78%	72%	64%

FERTILITY		CARCASE						
Scrotal Size (cm)	Days to Calving	Carc Weight	EMA (sq cm)	Rib Fat (mm)	Rump Fat (mm)	RBV (%)	IMF (%)	Trial Docility
<b>+4.0</b>	<b>-5.0</b>	<b>+78</b>	<b>+6.0</b>	<b>+1.6</b>	<b>+2.3</b>	+1.1	<b>+2.0</b>	<b>+12</b>
78%	51%	69%	62%	66%	69%	61%	68%	63%

STRUCTURAL ASSESSMENT						18-Jun-21	Temp.
Front	Back	Front	Back			16-Jun-21	
7	6	6	6	5	5	4	39
							1

INDEX VALUE				Polled Gene	Maturity	Mus Score	EYES	
SSR	NSR	SBM	NBT					Eye Pigment
<b>\$222</b>	<b>\$222</b>	<b>\$238</b>	<b>\$177</b>	<b>PP</b> Homz	Mid	C+		100/100
							4	

**Sire: WIRRUNA MATTY M288**

ALLENDALE YACKA  
 ALLENDALE ANZAC E114  
 ALLENDALE DAWN B22 (AI) (ET)

ELITE 4110 E212  
 WIRRUNA CIRCLE H13  
 WIRRUNA CIRCLE F31

MOUNT DIFFICULT FELLIS Y12 (AI)  
 WIRRUNA DAFFY D1  
 MOUNT DIFFICULT LAST DAY A205

**Dam: WIRRUNA VICTORIA G7**

ALLENDALE NATIONAL W168  
 WIRRUNA VICTORIA E112  
 SOUTH BUKALONG VICTORIA 202



**Semen Price**  
**\$50/straw**

Black highlight: Ranks with top 5% of breed

Grey highlight: Ranks with top 20% of breed

**Q100****Wirruna Quality Q100 (AI)****WNAQ100****(Wirruna Semen Sires)**

Birth Date: 9-Aug-19  
 Society ID: WNAQ100  
 Horn/Scurs/Poll: Homozygous Poll (Poll Gene test)

- Few in the breed can match "Quality Q100" for marbling & B- muscling
- Offers top 5% growth traits, without compromising calving ease traits
- Short gestation length EBV, for early born calves, promotes easier calving
- I rate this Matty son for his high ranking IMF% EBV & \$Index values

*(NB. NZ qualified Semen collected)*

Feb 2022 GROUP BREEDPLAN EBV's

CALVING EASE				GROWTH & MATERNAL				
Calving Ease DIR (%)	Calving Ease DTRS (%)	Gestation Length (days)	Birth Weight	200-Day Growth	400-Day Weight	600-Day Weight	Mat Cow Weight	Genetic Milk
<b>+9.6</b>	<b>+7.4</b>	<b>-5.9</b>	<b>+4.7</b>	<b>+46</b>	<b>+77</b>	<b>+107</b>	<b>+79</b>	<b>+20</b>
64%	47%	78%	85%	77%	75%	76%	70%	62%

FERTILITY		CARCASE						
Scrotal Size (cm)	Days to Calving	Carc Weight	EMA (sq cm)	Rib Fat (mm)	Rump Fat (mm)	RBV (%)	IMF (%)	Trial Docility
<b>+3.5</b>	<b>-4.4</b>	<b>+70</b>	<b>+5.7</b>	<b>+1.9</b>	<b>+2.4</b>	<b>+0.3</b>	<b>+3.7</b>	<b>+4</b>
78%	46%	67%	58%	63%	66%	57%	65%	57%

STRUCTURAL ASSESSMENT							29-Sep-20	Temp.
							9-Apr-21	
6	5	6	6	5	5	4	39	2

\$INDEX VALUE				Polled Gene	Maturity	Mus Score	EYES	
SSR	NSR	SBM	NBT					Eye Pigment
<b>\$239</b>	<b>\$224</b>	<b>\$252</b>	<b>\$186</b>	<b>PP</b> Homz	<b>Mid</b>	<b>B-</b>		<b>100/100</b>
							4	

**Sire: WIRRUNA MATTY M288**

ALLENDALE YACKA  
 ALLENDALE ANZAC E114  
 ALLENDALE DAWN B22 (AI) (ET)

ELITE 4110 E212  
 WIRRUNA CIRCLE H13  
 WIRRUNA CIRCLE F31

WIRRUNA CHEVIOT C280  
 WIRRUNA GABU G134  
 SOUTH BUKALONG VICTORIA 202

**Dam: WIRRUNA JANETTE K54**

WIRRUNA FLETCHER F214  
 WIRRUNA JANETTE H276  
 WIRRUNA JANETTE F166



**Semen Price**  
**\$50/straw**

Black highlight: Ranks with top 5% of breed

Grey highlight: Ranks with top 20% of breed

**Q135****Wirruna Quambone Q135 (AI)****WNAQ135****(Wirruna Semen Sires)**

Birth Date: 11-Aug-19  
 Society ID: WNAQ135  
 Horn/Scurs/Poll: Homozygous Poll (Poll Gene test)

- Techno son with curve bending growth, positive CE and moderate MCW
- Improve carcase attributes with top 1% CWT, IMF% & top 5% EMA EBVs
- Maternal strength via proven Dam, producing 3 Wirruna sires out of 7 calves
- I admire this fellows body length, shape & profitable balance of traits



Feb 2022 GROUP BREEDPLAN EBV's

CALVING EASE				GROWTH & MATERNAL				
Calving Ease DIR (%)	Calving Ease DTRS (%)	Gestation Length (days)	Birth Weight	200-Day Growth	400-Day Weight	600-Day Weight	Mat Cow Weight	Genetic Milk
<b>+9.0</b>	<b>+7.3</b>	<b>-2.0</b>	+3.8	<b>+43</b>	<b>+78</b>	<b>+104</b>	+71	<b>+28</b>
63%	52%	76%	86%	76%	74%	76%	70%	65%

FERTILITY		CARCASE						
Scrotal Size (cm)	Days to Calving	Carc Weight	EMA (sq cm)	Rib Fat (mm)	Rump Fat (mm)	RBV (%)	IMF (%)	Trial Docility
<b>+2.5</b>	<b>-5.7</b>	<b>+78</b>	<b>+6.1</b>	<b>+1.6</b>	+1.3	+1.0	<b>+2.4</b>	+4
78%	49%	66%	58%	63%	65%	58%	64%	57%

STRUCTURAL ASSESSMENT							18-Jun-21	Temp.
6	6	6	6	5	5	4	16-Jun-21 41	1

INDEX VALUE				Polled Gene	Maturity	Mus Score	EYES	
SSR	NSR	SBM	NBT					Eye Pigment
<b>\$232</b>	<b>\$211</b>	<b>\$242</b>	<b>\$174</b>	<b>PP</b> Homz	Mid	C+		100/100
							4	

Sire: **KOANUI TECHNO 3062**

KOANUI UNANIMOUS 7174  
 KOANUI UNANIMOUS 0408  
 KOANUI GIRLIE 3048

LEELANDS X-TENSION 293  
 KOANUI BLUSH 6455  
 KOANUI BLUSH 3304

QUAMBY PLAINS STOCKMASTER Y118  
 WIRRUNA FLETCHER F214  
 WIRRUNA LAST DAY B16 (H)

Dam: **WIRRUNA LAST DAY H364**

SOUTH BUKALONG WALLACE 2  
 WIRRUNA LAST DAY F14  
 WIRRUNA LAST DAY D34



Black highlight: Ranks with top 5% of breed

Grey highlight: Ranks with top 20% of breed

**Q266****Wirruna Querido Q266 (AI)****WNAQ266****(Wirruna Semen Sires)**

Birth Date: 20-Aug-19  
 Society ID: WNAQ266  
 Horn/Scurs/Poll: Homozygous Poll (Poll Gene test)

- Highly rated Wirruna Sire by EFB Validated - the highest marbling US Sire
- He carries both carcass quantity (top 5% EMA) & quality (top 1% IMF%)
- Offers strong calving ease, good early growth & moderate MCW EBVs
- I think this fellow is very well put together & offers outcross genetics

**Easy-calve**

Feb 2022 GROUP BREEDPLAN EBV's

CALVING EASE				GROWTH & MATERNAL				
Calving Ease DIR (%)	Calving Ease DTRS (%)	Gestation Length (days)	Birth Weight	200-Day Growth	400-Day Weight	600-Day Weight	Mat Cow Weight	Genetic Milk
<b>+9.1</b>	<b>+5.6</b>	+0.5	+4.0	<b>+46</b>	<b>+74</b>	<b>+100</b>	+60	+19
62%	40%	76%	86%	76%	74%	76%	68%	60%

FERTILITY		CARCASS						
Scrotal Size (cm)	Days to Calving	Carc Weight	EMA (sq cm)	Rib Fat (mm)	Rump Fat (mm)	RBV (%)	IMF (%)	Trial Docility
<b>+3.4</b>	<b>-5.2</b>	<b>+67</b>	<b>+6.8</b>	<b>+1.8</b>	+1.3	+0.0	<b>+3.2</b>	+3
78%	40%	63%	55%	60%	62%	54%	61%	52%

STRUCTURAL ASSESSMENT							18-Jun-21	Temp.
							16-Jun-21	
7	6	5	6	5	5	3	36	2

INDEX VALUE				Polled Gene	Maturity	Mus Score	EYES	
SSR	NSR	SBM	NBT					Eye Pigment
<b>\$233</b>	<b>\$214</b>	<b>\$239</b>	<b>\$170</b>	<b>PP</b> Homz	Mid	C+		100/100
							4	

*EFBEEF FOREMOST U208 (IMP)*  
 EFBEEF TFL U208 TESTED X651  
 EFBEEF P606 MABEL R415

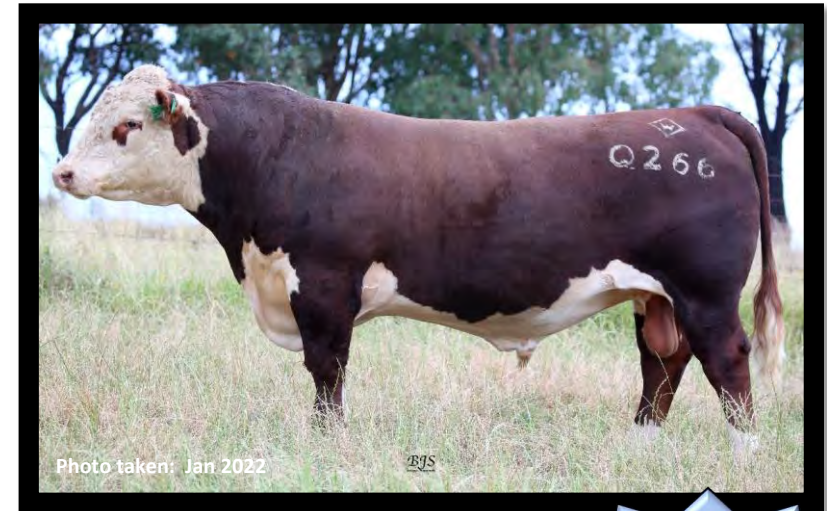
**Sire: EFBEEF BR VALIDATED B413**

*MSU TCF REVOLUTION 4R*  
 EFBEEF 4R THYRA Y865  
 EFBEEF N014 THYRA S645

*QUAMBY PLAINS STOCKMASTER Y118*  
 WIRRUNA FLETCHER F214  
 WIRRUNA LAST DAY B16 (H)

**Dam: CO-OP5 URSULA J427**

*WIRRUNA COMET C90*  
 WIRRUNA URSULA E278  
 WIRRUNA URSULA A241



**Semen Price**  
**\$50/straw**

Black highlight: Ranks with top 5% of breed

Grey highlight: Ranks with top 20% of breed

**Q281****Wirruna Quarter Back Q281****WNAQ281****(Wirruna Semen Sires)**

Birth Date: 22-Aug-19  
 Society ID: WNAQ281  
 Horn/Scurs/Poll: Homozygous Poll (Poll Gene test)

- A HAL Super Sire for trait balance & proven performance
- Carcase weight, Eye Muscle Area & Marbling in top 5% of breed
- Top 1% ranking for \$Index values reflects excellent profit driving traits
- Note his tight sheath, docility & rich dark coat

*Easy-calve*

Feb 2022 GROUP BREEDPLAN EBV's

CALVING EASE				GROWTH & MATERNAL				
Calving Ease DIR (%)	Calving Ease DTRS (%)	Gestation Length (days)	Birth Weight	200-Day Growth	400-Day Weight	600-Day Weight	Mat Cow Weight	Genetic Milk
<b>+10.4</b>	+2.8	<b>-3.8</b>	+3.3	+36	<b>+77</b>	<b>+105</b>	+73	+16
61%	43%	65%	84%	73%	70%	72%	66%	56%

FERTILITY		CARCASE						
Scrotal Size (cm)	Days to Calving	Carc Weight	EMA (sq cm)	Rib Fat (mm)	Rump Fat (mm)	RBV (%)	IMF (%)	Trial Docility
<b>+5.5</b>	<b>-6.0</b>	<b>+74</b>	<b>+6.5</b>	<b>+1.8</b>	<b>+2.6</b>	+0.9	<b>+2.1</b>	<b>+11</b>
76%	41%	59%	49%	56%	60%	52%	57%	48%

STRUCTURAL ASSESSMENT							29-Sep-20	Temp.
							9-Apr-21	
6	5	5	6	5	5	4	41	1

\$INDEX VALUE				Polled Gene	Maturity	Mus Score	EYES	
SSR	NSR	SBM	NBT					Eye Pigment
<b>\$239</b>	<b>\$229</b>	<b>\$247</b>	<b>\$180</b>	<b>PP</b> Homz	Mid	C+		100/100
							4	

Sire: **WIRRUNA NEW ERA N068**

ALLENDALE YACKA  
 ALLENDALE ANZAC E114  
 ALLENDALE DAWN B22 (AI) (ET)

WIRRUNA CANDIDATE C118  
 WIRRUNA CORA E319  
 WIRRUNA CORA B38

NITHDALE JACKAL 090029  
 ORARI GORGE MISCHIEF 120083  
 NITHDALE LESLIE 090020

Dam: **WIRRUNA CIRCLE N138**

WIRRUNA JANSEN J143  
 WIRRUNA CIRCLE L421  
 WIRRUNA CIRCLE H13



**Semen Price**  
**\$50/straw**

Black highlight: Ranks with top 5% of breed

Grey highlight: Ranks with top 20% of breed

## February 2022 Hereford BREEDPLAN - Percentile Bands for all 2020 born animals

Use this table as a guide to compare individual animals with the current genetic level of the breed

	Calv-Ease		Birth		Growth					Fert		Carcase					Extra		Indexes				
	Dir	Dtrs	GL	Bwt	200	400	600	Mwt	Milk	SS	DC	Cwt	EMA	Rib	P8	RBY	IMF	Doc	NFI	SSR	NSR	SBM	NBT
	%		days	kg					cm	days	kg	sq.cm	mm		%	kg/day		\$					
High 1%	+12.5	+9.1	-6.7	-1.5	+49	+81	+116	+110	+27	+4.3	-6.7	+77	+7.4	+2.7	+3.7	+2.5	+2.3	+23	-0.36	+217	+207	+224	+163
High 5%	+10.5	+7.2	-4.0	+0.2	+44	+73	+104	+96	+24	+3.5	-5.5	+69	+6.2	+2.1	+2.8	+1.9	+1.7	+17	-0.21	+194	+183	+202	+147
High 10%	+9.1	+6.2	-3.0	+1.1	+42	+69	+98	+90	+22	+3.1	-5.0	+65	+5.5	+1.8	+2.4	+1.7	+1.4	+14	-0.15	+180	+169	+188	+137
High 15%	+8.0	+5.5	-2.4	+1.7	+40	+66	+94	+86	+21	+2.9	-4.6	+62	+5.1	+1.6	+2.1	+1.5	+1.2	+12	-0.11	+170	+159	+177	+129
High 20%	+7.1	+4.9	-2.0	+2.1	+39	+64	+91	+82	+20	+2.7	-4.3	+60	+4.8	+1.4	+1.9	+1.3	+1.1	+10	-0.08	+163	+150	+168	+123
High 25%	+6.2	+4.4	-1.6	+2.5	+38	+63	+89	+79	+20	+2.6	-4.1	+58	+4.6	+1.3	+1.7	+1.2	+0.9	+9	-0.05	+156	+144	+160	+117
High 30%	+5.4	+3.9	-1.3	+2.9	+37	+61	+86	+76	+19	+2.5	-3.9	+57	+4.3	+1.2	+1.5	+1.1	+0.8	+8	-0.03	+151	+137	+154	+113
High 35%	+4.6	+3.5	-1.1	+3.2	+36	+60	+84	+74	+18	+2.4	-3.7	+55	+4.2	+1.1	+1.4	+1.0	+0.8	+7	-0.01	+146	+132	+148	+109
High 40%	+3.9	+3.1	-0.9	+3.5	+35	+58	+82	+71	+18	+2.3	-3.5	+54	+4.0	+1.0	+1.2	+0.9	+0.7	+5	+0.00	+140	+127	+143	+105
High 45%	+3.2	+2.6	-0.7	+3.8	+34	+57	+80	+69	+17	+2.2	-3.3	+53	+3.8	+0.9	+1.1	+0.8	+0.6	+4	+0.01	+136	+122	+138	+102
<b>50%</b>	+2.5	+2.2	-0.5	+4.1	+33	+56	+78	+66	+17	+2.1	-3.1	+51	+3.7	+0.8	+1.0	+0.8	+0.5	+3	+0.02	+132	+118	+133	+98
Low 45%	+1.9	+1.8	-0.3	+4.4	+33	+54	+76	+64	+16	+2.0	-2.9	+50	+3.5	+0.7	+0.8	+0.7	+0.5	+2	+0.03	+128	+113	+128	+95
Low 40%	+1.2	+1.4	-0.1	+4.6	+32	+53	+74	+62	+16	+1.9	-2.7	+49	+3.3	+0.6	+0.7	+0.6	+0.4	+1	+0.04	+124	+109	+123	+91
Low 35%	+0.5	+0.9	+0.1	+4.9	+31	+52	+72	+59	+15	+1.8	-2.5	+47	+3.2	+0.5	+0.6	+0.5	+0.3	+1	+0.06	+119	+104	+118	+87
Low 30%	-0.1	+0.4	+0.3	+5.2	+30	+50	+70	+56	+14	+1.7	-2.3	+46	+3.0	+0.4	+0.4	+0.4	+0.2	+0	+0.07	+114	+99	+113	+83
Low 25%	-0.9	-0.1	+0.5	+5.5	+29	+48	+67	+53	+14	+1.6	-2.0	+44	+2.8	+0.3	+0.2	+0.3	+0.2	-1	+0.08	+109	+94	+107	+79
Low 20%	-1.8	-0.6	+0.8	+5.8	+28	+47	+65	+50	+13	+1.4	-1.8	+42	+2.7	+0.2	+0.1	+0.2	+0.1	-3	+0.09	+103	+88	+101	+75
Low 15%	-2.7	-1.2	+1.0	+6.2	+26	+44	+62	+46	+12	+1.3	-1.5	+40	+2.4	+0.0	-0.1	+0.1	+0.0	-4	+0.11	+97	+81	+94	+69
Low 10%	-4.0	-2.0	+1.4	+6.6	+24	+42	+57	+41	+11	+1.1	-1.1	+38	+2.2	-0.2	-0.4	-0.1	-0.1	-7	+0.13	+88	+73	+85	+63
Low 5%	-5.9	-3.1	+2.0	+7.2	+22	+37	+50	+33	+10	+0.8	-0.6	+33	+1.8	-0.5	-0.8	-0.4	-0.3	-13	+0.17	+75	+60	+71	+53
Low 1%	-10.1	-5.7	+3.4	+8.4	+15	+25	+34	+13	+7	+0.2	+0.2	+23	+1.1	-1.1	-1.6	-0.9	-0.6	-23	+0.28	+48	+37	+43	+32