



WIRRUNA
poll herefords

Contact: Ian Locke
Wirruna Poll Hereford Stud
"Spring Valley" Holbrook
NSW 2644

Phone: (02) 60362877
Mobile: (0408) 637 267
Email: office@wirruna.com
Website: www.wirruna.com

WIRRUNA POLL HEREFORDS

SEMEN SIRES

Ten of the Best

2022 CATALOGUE



Wirruna Poll Hereford Stud
 IAN & DIANA LOCKE
 "Spring Valley"
 Holbrook NSW 2644

ph. 02 6036 2877
 mb. 0408 637 267
 email office@wirruna.com
 Website www.wirruna.com

Wirruna Semen Sires

Ten of the Best



Feb 2022 GROUP BREEDPLAN EBV's																						Black highlight: Ranks with top 5% of breed				Grey highlight: Ranks with top 20% of breed			
Tag No	Animal Tag	Sire	CALVING EASE				GROWTH & MATERNAL					FERTILITY		CARCASE DATA EBV's								INDEX VALUE				Semen Price/straw			
			CED	CEM	GL	BW	200	400	600	MCW	Milk	SS	DC	CW	EMA	Rib Fat	P8 Fat	RBY	IMF	Trial Docility	SSR	NSR	SBM	NBT					
P054	Wirruna Pilot P054 (AI)	Wirruna Kalimna K326	+12.4	+7.0	-6.4	+0.9	+39	+69	+84	+60	+23	+5.8	-7.6	+64	+3.4	+2.8	+3.8	-1.2	+1.6	+19	\$191	\$183	\$209	\$155	\$50				
P149	Wirruna Papa P149 (AI)	Koanui Techno 3062	+7.3	+6.9	-3.0	+5.2	+38	+75	+104	+85	+20	+3.7	-4.6	+73	+6.5	+1.1	+1.5	+2.5	+1.0	+14	\$220	\$211	\$229	\$164	\$50				
P239	Wirruna Promise P239 (AI)	Wirruna Kalimna K326	+6.9	+2.4	+0.1	+2.6	+41	+79	+104	+71	+26	+5.9	-6.4	+74	+4.9	+1.8	+2.3	+0.1	+2.7	+13	\$224	\$206	\$226	\$166	\$50				
N049	Wirruna Noel N049 (AI)	Wirruna Kalimna K326	+11.3	+5.1	-7.5	+0.9	+40	+72	+88	+55	+25	+2.4	-4.7	+74	+5.7	+1.6	+2.1	+0.3	+2.6	-4	\$205	\$193	\$225	\$170	\$50				
N322	Wirruna National N322 (AI)	KCF Bennett Revolution	+6.4	+4.0	+1.7	+4.1	+42	+66	+86	+57	+16	+1.6	-4.7	+69	+13.2	+1.6	+2.2	+3.4	+1.6	-2	\$218	\$224	\$219	\$158	\$50				
N449	Wirruna Neutron N449	Wirruna Killara K106	+5.6	+2.4	-3.0	+4.2	+40	+67	+90	+71	+19	+4.4	-9.0	+70	+8.4	+1.8	+1.8	+1.5	+1.8	-24	\$211	\$203	\$202	\$146	\$50				
M089	Wirruna Midnight M089 (AI)	Mount Difficult Cadbury	+8.8	+6.8	-3.9	+5.3	+49	+85	+119	+117	+19	+2.9	-6.0	+86	+7.2	+0.9	+2.1	+1.8	+0.3	+29	\$227	\$219	\$239	\$178	\$40				
M175	Wirruna McLaren M175 (AI)	Wirruna Justin J13	+5.2	+8.6	-3.9	+3.5	+43	+70	+93	+79	+5	+2.1	-3.7	+76	+6.5	+1.8	+2.2	+0.9	+2.9	+13	\$213	\$214	\$214	\$154	\$50				
L285	Wirruna Ledger L285 (AI)	Allendale Anzac E114	+3.5	+0.5	-1.9	+4.2	+49	+80	+103	+71	+21	+4.8	-5.6	+79	+6.2	+1.6	+2.3	+0.8	+1.1	+11	\$206	\$195	\$201	\$144	\$50				
F214	Wirruna Fletcher F214	QP Stockmaster Y118	+7.4	+9.9	-6.6	+4.4	+46	+71	+93	+58	+23	+1.9	-7.2	+66	+5.8	+0.2	-1.9	+1.4	+2.4	+0	\$226	\$200	\$226	\$154	\$50				
Breed Ave. '20 drop			+2.5	+2.1	-0.7	+4.0	+33	+55	+78	+66	+17	+2.1	-3.1	+51	+3.8	+0.8	+1.0	+0.8	+0.6	+3	\$133	\$119	\$135	\$99	+ GST				

Improve your beef herd profitability with Wirruna Poll Hereford genetics

- ☑ Disciplined Approach to Breeding
All cows must raise live unassisted calf at 2 yrs and rejoin annually in strict 6 week joining period to remain in herd
- ☑ High level Performance Program
*All cattle assessed in large management groups and run at high stocking rates to screen commercially acceptable genetics
 Recognised as one of the leading Breedplan performance recorded herds in Australia*
- ☑ Breed leading genetics
All 2021 Wirruna born calves average in top 5% of the breed for all \$Indices

P054**Wirruna Pilot P054 (AI)****WNAP054****(Wirruna Semen Sires)**

Birth Date: 5-Aug-18
 Society ID: WNAP054
 Horn/Scurs/Poll: Homozygous Poll (Poll Gene test)

- Kalimna son for calving ease - Selected as HAL Super Sire
- A real curve-bender offering good growth from an easy calving genetic base
- Strong fertility attributes - male (top 1% SS) & female (top 1% DtC)
- Short gestation length benefits with calves out & growing earlier

(NB. 50% semen rights owned by McIntosh family)**Easy-calve**

Feb 2022 GROUP BREEDPLAN EBV's

CALVING EASE				GROWTH & MATERNAL				
Calving Ease DIR (%)	Calving Ease DTRS (%)	Gestation Length (days)	Birth Weight	200-Day Growth	400-Day Weight	600-Day Weight	Mat Cow Weight	Genetic Milk
+12.4	+7.0	-6.4	+0.9	+39	+69	+84	+60	+23
71%	53%	87%	93%	87%	85%	83%	76%	65%

FERTILITY		CARCASE						
Scrotal Size (cm)	Days to Calving	Carc Weight	EMA (sq cm)	Rib Fat (mm)	Rump Fat (mm)	RBV (%)	IMF (%)	Trial Docility
+5.8	-7.6	+64	+3.4	+2.8	+3.8	-1.2	+1.6	+19
86%	56%	75%	68%	73%	76%	68%	76%	78%

STRUCTURAL ASSESSMENT							23-Dec-20	Temp.
							14-Dec-20	
7	5	5	5	5	5	4	42	1

INDEX VALUE				Polled Gene	Maturity	Mus Score	EYES	
SSR	NSR	SBM	NBT					Eye Pigment
\$191	\$183	\$209	\$155	PP Homz	Mid	C+		100/100
							4	

Sire: WIRRUNA KALIMNA K326

WIRRUNA EXPLORER E188
 WIRRUNA HARTWIG H297
 WIRRUNA MIDGE A51

ARDO HUSTLER 4110 (IMP)
 WIRRUNA CORA H303
 WIRRUNA CORA D9

ALLENDALE YACKA
 ALLENDALE ANZAC E114
 ALLENDALE DAWN B22 (AI) (ET)

Dam: WIRRUNA CLARA M239

SOUTH BUKALONG SHANNON 40
 WIRRUNA CLARA F438
 PINE HILL CLARA B585



Semen Price
\$50/straw

Black highlight: Ranks with top 5% of breed

Grey highlight: Ranks with top 20% of breed

P149**Wirruna Papa P149 (AI)****WNAP149****(Wirruna Semen Sires)**

Birth Date: 10-Aug-18
 Society ID: WNAP149
 Horn/Scurs/Poll: Homozygous Poll (Poll Gene test)

- Papa is a classy, good-barrelled sire by Koanui Techno
- Appreciate his good growth without compromising the calving ease traits
- A high libido bull with high semen quality
- Few bulls can boast higher \$indices to boost profit potential

(NB. Glendan Park Herefords have 100% possession & 50% semen share)

Feb 2022 GROUP BREEDPLAN EBV's

CALVING EASE				GROWTH & MATERNAL				
Calving Ease DIR (%)	Calving Ease DTRS (%)	Gestation Length (days)	Birth Weight	200-Day Growth	400-Day Weight	600-Day Weight	Mat Cow Weight	Genetic Milk
+7.3	+6.9	-3.0	+5.2	+38	+75	+104	+85	+20
62%	50%	75%	88%	80%	79%	78%	73%	63%

FERTILITY		CARCASE						
Scrotal Size (cm)	Days to Calving	Carc Weight	EMA (sq cm)	Rib Fat (mm)	Rump Fat (mm)	RBV (%)	IMF (%)	Trial Docility
+3.7	-4.6	+73	+6.5	+1.1	+1.5	+2.5	+1.0	+14
81%	51%	69%	61%	67%	71%	63%	69%	66%

STRUCTURAL ASSESSMENT							23-Dec-20	Temp.
							14-Dec-20	
6	7	6	7	5	5	3	41	1

\$INDEX VALUE				Polled Gene	Maturity	Mus Score	EYES	
SSR	NSR	SBM	NBT					Eye Pigment
\$220	\$211	\$229	\$164	PP Homz	Mid	C+		100/100
							4	

Sire: KOANUI TECHNO 3062

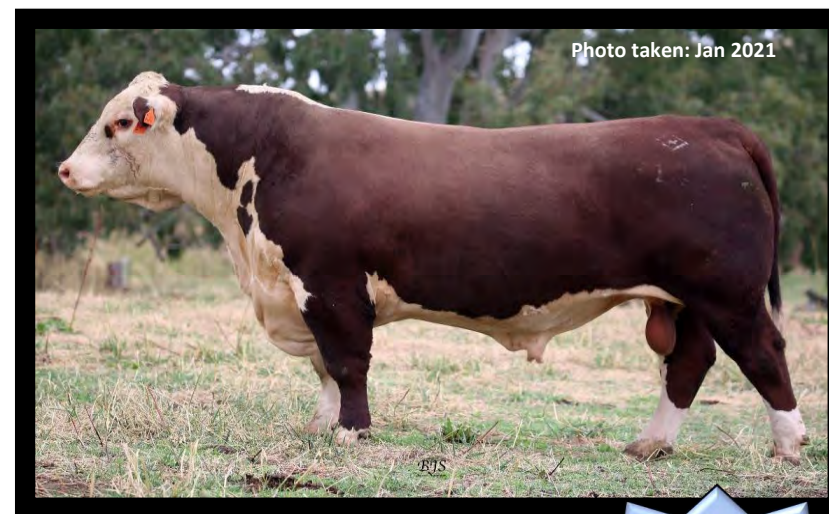
KOANUI UNANIMOUS 7174
 KOANUI UNANIMOUS 0408
 KOANUI GIRLIE 3048

LEELANDS X-TENSION 293
 KOANUI BLUSH 6455
 KOANUI BLUSH 3304

MOUNT DIFFICULT CADBURY
 WIRRUNA JACKAROO J35
 WIRRUNA MADAM G153

Dam: WIRRUNA LAST DAY L417

EFBEEF FOREMOST U208 (IMP)
 WIRRUNA LAST DAY J438
 WIRRUNA LAST DAY D84



Black highlight: Ranks with top 5% of breed

Grey highlight: Ranks with top 20% of breed

P239**Wirruna Promise P239 (AI)****WNAP239****(Wirruna Semen Sires)**

Birth Date: 15-Aug-18
 Society ID: WNAP239
 Horn/Scurs/Poll: Homozygous Poll (Poll Gene test)

- Nice bodied & sound sire with top 1% ranking for all \$indices
- Few sires offer this stretch between low birthweight and high growth
- Exceptional Fertility traits - Top-end SS & DtC EBVs and positive fats
- Excellent carcass quality with top 1% marbling

*Easy-calve*

Feb 2022 GROUP BREEDPLAN EBV's

CALVING EASE				GROWTH & MATERNAL				
Calving Ease DIR (%)	Calving Ease DTRS (%)	Gestation Length (days)	Birth Weight	200-Day Growth	400-Day Weight	600-Day Weight	Mat Cow Weight	Genetic Milk
+6.9	+2.4	+0.1	+2.6	+41	+79	+104	+71	+26
68%	52%	89%	93%	85%	82%	82%	75%	65%

FERTILITY		CARCASS						
Scrotal Size (cm)	Days to Calving	Carc Weight	EMA (sq cm)	Rib Fat (mm)	Rump Fat (mm)	RBV (%)	IMF (%)	Trial Docility
+5.9	-6.4	+74	+4.9	+1.8	+2.3	+0.1	+2.7	+13
84%	54%	74%	65%	70%	73%	64%	72%	77%

STRUCTURAL ASSESSMENT							26-Jun-20	Temp.
Front	Back	Front	Back				19-Jun-20	
							43	
6	5	5	5	5	5	4		1

INDEX VALUE				Polled Gene	Maturity	Mus Score	EYES	
SSR	NSR	SBM	NBT					Eye Pigment
\$224	\$206	\$226	\$166	PP Homz	Late	C+	3	100/95

Sire: **WIRRUNA KALIMNA K326**

WIRRUNA EXPLORER E188
 WIRRUNA HARTWIG H297
 WIRRUNA MIDGE A51

ARDO HUSTLER 4110 (IMP)
 WIRRUNA CORA H303
 WIRRUNA CORA D9

ELITE 4110 E212
 WIRRUNA HERNANDO H47
 WIRRUNA VICTORIA F203

Dam: **WIRRUNA CIRCLE M183**

MATARIKI HOLY-SMOKE
 WIRRUNA CIRCLE K95
 WIRRUNA CIRCLE H13



Semen Price
\$50/straw

Black highlight: Ranks with top 5% of breed

Grey highlight: Ranks with top 20% of breed

N049**Wirruna Noel N049 (AI)****WNAN049****(Wirruna Semen Sires)**

Birth Date: 9-Aug-17
 Society ID: WNAN049
 Horn/Scurs/Poll: Poll

- Upstanding Kalimna son with excellent head carriage
- Among the highest marbling bulls in the breed - fast-track your herd IMF%
- Excellent curve-bending growth from a low birthweight base
- Top 5% \$Index bull - High CE, Short GL and strong Milk traits

(NB. NZ qualified semen available - 50% semen rights owned by the Larken family)**Easy-calve**

Feb 2022 GROUP BREEDPLAN EBV's

CALVING EASE				GROWTH & MATERNAL				
Calving Ease DIR (%)	Calving Ease DTRS (%)	Gestation Length (days)	Birth Weight	200-Day Growth	400-Day Weight	600-Day Weight	Mat Cow Weight	Genetic Milk
+11.3	+5.1	-7.5	+0.9	+40	+72	+88	+55	+25
68%	55%	92%	93%	89%	90%	91%	81%	63%

FERTILITY		CARCASE						
Scrotal Size (cm)	Days to Calving	Carc Weight	EMA (sq cm)	Rib Fat (mm)	Rump Fat (mm)	RBV (%)	IMF (%)	Trial Docility
+2.4	-4.7	+74	+5.7	+1.6	+2.1	+0.3	+2.6	-4
87%	57%	84%	74%	78%	82%	70%	81%	72%

STRUCTURAL ASSESSMENT						4-Jul-19	Temp.
6	6	5	5	5	5	40	2

\$INDEX VALUE				Polled Gene	Maturity	Mus Score	EYES	
SSR	NSR	SBM	NBT					Eye Pigment
\$205	\$193	\$225	\$170	Ph Hetz	Mid	C+		100/100

Sire: WIRRUNA KALIMNA K326

WIRRUNA EXPLORER E188
 WIRRUNA HARTWIG H297
 WIRRUNA MIDGE A51

ARDO HUSTLER 4110 (IMP)
 WIRRUNA CORA H303
 WIRRUNA CORA D9

CAPETHORNE HOT SHOT 03 22
 MATARIKI HOLY-SMOKE
 MATARIKI GIRLIE 00323

Dam: WIRRUNA CIRCE L192

BANEMORE NORTH END D36
 CO-OP5 CIRCE G396
 SOUTH BUKALONG CIRCE 105



Semen Price
\$50/straw

Black highlight: Ranks with top 5% of breed

Grey highlight: Ranks with top 20% of breed

N322**Wirruna National N322 (AI)****WNAN322****(Wirruna Semen Sires)**

Birth Date: 23-Aug-17
 Society ID: WNAN322
 Horn/Scurs/Poll: Homozygous Poll (Poll Gene test)

- High \$Index sire by Revolution showing a good balance of desirable traits
- Displays excellent B- muscling - few bulls can boast an EMA EBV over 10
- I appreciate the rare trait combination of high meat yield & carcass quality
- Features curve-bending & top 20% growth, with moderate BWT & MCW

(NB. Morganvale Poll Herefords have 100% possession & 50% semen share)**Easy-calve**

Feb 2022 GROUP BREEDPLAN EBV's

CALVING EASE				GROWTH & MATERNAL				
Calving Ease DIR (%)	Calving Ease DTRS (%)	Gestation Length (days)	Birth Weight	200-Day Growth	400-Day Weight	600-Day Weight	Mat Cow Weight	Genetic Milk
+6.4	+4.0	+1.7	+4.1	+42	+66	+86	+57	+16
70%	56%	91%	95%	92%	89%	88%	79%	63%

FERTILITY		CARCASS						
Scrotal Size (cm)	Days to Calving	Carc Weight	EMA (sq cm)	Rib Fat (mm)	Rump Fat (mm)	RBV (%)	IMF (%)	Trial Docility
+1.6	-4.7	+69	+13.2	+1.6	+2.2	+3.4	+1.6	-2
86%	56%	77%	67%	73%	78%	70%	76%	80%

STRUCTURAL ASSESSMENT						4-Jul-19	Temp.	
6	6	5	6	5	5	4	38	
							4-Jul-19	2

\$INDEX VALUE				Polled Gene	Maturity	Mus Score	EYES	
SSR	NSR	SBM	NBT					Eye Pigment
\$218	\$224	\$219	\$158	PP Homz	Mid	B-		100/100
							4	

FELTONS LEGEND 242 (IMP USA)
 MSU TCF REVOLUTION 4R
 MSU TCF RACHAEL ET 54N

Sire: KCF BENNETT REVOLUTION X51

EFBEEF SCHU-LAR PROFICIENT N093 (
 KCF MISS PROFICIENT U201
 KCF MISS 774 L82

CAPETHORNE HOT SHOT 03 22
 MATARIKI HOLY-SMOKE
 MATARIKI GIRLIE 00323

Dam: WIRRUNA DOREEN J56

WIRRUNA DAVE D101
 WIRRUNA DOREEN G327
 WIRRUNA DOREEN C9



Semen Price
\$50/straw

Black highlight: Ranks with top 5% of breed

Grey highlight: Ranks with top 20% of breed

N449**Wirruna Neutron N449****WNAN449****(Wirruna Semen Sires)**

Birth Date: 2-Sep-17
 Society ID: WNAN449
 Horn/Scurs/Poll: Poll

- Top selling bull Autumn 2020 - 2nd Sire produced by this Dam
- Offers superior carcass attributes - top 1% ranking for EMA & top 5% IMF%
- I love his B- muscling and easy-doing ability
- Strong Fertility traits with good scrotal size & Days to Calving EBVs

(NB. Cascade Poll Herefords have 100% possession & 50% semen share)

Feb 2022 GROUP BREEDPLAN EBV's

CALVING EASE				GROWTH & MATERNAL				
Calving Ease DIR (%)	Calving Ease DTRS (%)	Gestation Length (days)	Birth Weight	200-Day Growth	400-Day Weight	600-Day Weight	Mat Cow Weight	Genetic Milk
+5.6	+2.4	-3.0	+4.2	+40	+67	+90	+71	+19
63%	51%	87%	93%	88%	87%	88%	78%	61%

FERTILITY		CARCASS						Docility
Scrotal Size (cm)	Days to Calving	Carc Weight	EMA (sq cm)	Rib Fat (mm)	Rump Fat (mm)	RBV (%)	IMF (%)	Trial Docility
+4.4	-9.0	+70	+8.4	+1.8	+1.8	+1.5	+1.8	-24
84%	54%	76%	63%	70%	75%	66%	73%	80%

STRUCTURAL ASSESSMENT							4-Jul-19	Temp.
							4-Jul-19	
7	6	6	6	5	5	4	42	2

INDEX VALUE				Polled Gene	Maturity	Mus Score	EYES	
SSR	NSR	SBM	NBT					Eye Pigment
\$211	\$203	\$202	\$146	Ph Hetz	Mid	B-		100/100

QUAMBY PLAINS STOCKMASTER Y118
 WIRRUNA FLETCHER F214
 WIRRUNA LAST DAY B16 (H)

Sire: WIRRUNA KILLARA K106

WIRRUNA DAFFY D1
 WIRRUNA MIDGE G482
 WIRRUNA MIDGE C76

STUDBROOK D'ARTAGNION V086 (AI) (I)
 OTAPAWA SPARK 3060 (IMP)
 OTAPAWA SPOT P30

Dam: WIRRUNA VICTORIA J199

SOUTH BUKALONG UNGAR 8
 SOUTH BUKALONG VICTORIA 236
 SOUTH BUKALONG VICTORIA 200



Semen Price
\$50/straw

Black highlight: Ranks with top 5% of breed

Grey highlight: Ranks with top 20% of breed

M089**Wirruna Midnight M089 (AI)****WNAM089****(Wirruna Semen Sires)**

Birth Date: 11-Aug-16
 Society ID: WNAM089
 Horn/Scurs/Poll: Homozygous Poll (Poll Gene test)

- Docile, growthy & easy-doing Wirruna Sire by Cadbury
- Top 5% traits across the board to drive your future herd improvement
- A heifer's first calf achieving good weight/day of age & strong EMA scan
- Top 1% \$Indices reflect the great profit potential offered by this Sire

(NB. 50% semen rights owned by Jigsaw Farms)

Feb 2022 GROUP BREEDPLAN EBV's

CALVING EASE				GROWTH & MATERNAL				
Calving Ease DIR (%)	Calving Ease DTRS (%)	Gestation Length (days)	Birth Weight	200-Day Growth	400-Day Weight	600-Day Weight	Mat Cow Weight	Genetic Milk
+8.8	+6.8	-3.9	+5.3	+49	+85	+119	+117	+19
66%	51%	87%	90%	86%	82%	82%	75%	67%

FERTILITY		CARCASE						
Scrotal Size (cm)	Days to Calving	Carc Weight	EMA (sq cm)	Rib Fat (mm)	Rump Fat (mm)	RBV (%)	IMF (%)	Trial Docility
+2.9	-6.0	+86	+7.2	+0.9	+2.1	+1.8	+0.3	+29
84%	54%	72%	62%	68%	71%	64%	69%	69%

STRUCTURAL ASSESSMENT							25-Jun-18	Temp.
							20-Jun-18	
7	6	6	6	5	5	3	40	2

INDEX VALUE				Polled Gene	Maturity	Mus Score	EYES	
SSR	NSR	SBM	NBT					Eye Pigment
\$227	\$219	\$239	\$178	PP Homz	Mid	C+		100/100
							3	

Sire: MOUNT DIFFICULT CADBURY

KOANUI ROCKET Q334
 KOANUI ROCKET 0219
 KOANUI ANGEL R187

YARROW CORK
 MOUNT DIFFICULT MONIQUE V65
 MOUNT DIFFICULT MONIQUE

GH ADAMS TARGET 5S (IMP)
 WIRRUNA HURRICANE H132
 WIRRUNA FLORA D261

Dam: WIRRUNA PAGE K502

ELITE 4110 E212
 WIRRUNA PAGE H75
 WIRRUNA PAGE F309



Semen Price
\$40/straw

Black highlight: Ranks with top 5% of breed

Grey highlight: Ranks with top 20% of breed

M175**Wirruna McLaren M175 (AI)****WNAM175****(Wirruna Semen Sires)**

Birth Date: 13-Aug-16
 Society ID: WNAM175
 Horn/Scurs/Poll: Homozygous Poll (Poll Gene test)

- The standout Justin son with curve-bending growth
- I like his stretchy body, conformation & clean front-end
- High value carcass boosting attributes - top 1% IMF%, top 5% EMA & CWT
- Amongst the top 'M' bulls for \$Index values -high profit EBVs

(NB. 50% semen rights owned by Oak Downs Poll Herefords)**Easy-calve**

Feb 2022 GROUP BREEDPLAN EBVs

CALVING EASE				GROWTH & MATERNAL				
Calving Ease DIR (%)	Calving Ease DTRS (%)	Gestation Length (days)	Birth Weight	200-Day Growth	400-Day Weight	600-Day Weight	Mat Cow Weight	Genetic Milk
+5.2	+8.6	-3.9	+3.5	+43	+70	+93	+79	+5
74%	62%	92%	94%	91%	91%	91%	85%	76%

FERTILITY		CARCASS						
Scrotal Size (cm)	Days to Calving	Carc Weight	EMA (sq cm)	Rib Fat (mm)	Rump Fat (mm)	RBV (%)	IMF (%)	Trial Docility
+2.1	-3.7	+76	+6.5	+1.8	+2.2	+0.9	+2.9	+13
91%	62%	80%	70%	75%	79%	72%	79%	81%

STRUCTURAL ASSESSMENT							25-Jun-18	Temp.
Front	Back	Front	Back				20-Jun-18	
6	5	5	5	5	5	3	38	2

\$INDEX VALUE				Polled Gene	Maturity	Mus Score	EYES	
SSR	NSR	SBM	NBT					Eye Pigment
\$213	\$214	\$214	\$154	PP Homz	Mid	C+		100/100
							4	

Sire: WIRRUNA JUSTIN J13

CAPETHORNE HOT SHOT 03 22
 MATARIKI HOLY-SMOKE
 MATARIKI GIRLIE 00323

WIRRUNA ELDAD E107
 WIRRUNA DOREEN G393
 WIRRUNA DOREEN E42

SOUTH BUKALONG WALLACE 2
 WIRRUNA FORT F382
 MOUNT DIFFICULT LORNA B123

Dam: WIRRUNA LORNA J413

MOUNT DIFFICULT ACCURATE (AI)
 MOUNT DIFFICULT LORNA C11
 MOUNT DIFFICULT LORNA A65



Semen Price
\$50/straw

Black highlight: Ranks with top 5% of breed

Grey highlight: Ranks with top 20% of breed

L285 ✓**Wirruna Ledger L285 (AI)****WNAL285****(Wirruna Semen Sires)**

Birth Date: 19-Aug-15
 Society ID: WNAL285
 Horn/Scurs/Poll: Homozygous Poll (UQ Gene test)

- ✓ Emerged as the standout bull of the Wirruna 2015 drop
- ✓ You can see the carcass in this fellow. Scanning revealed high IMF & EMA
- ✓ Strong \$Indices are high-end for his age & reflects exceptional set of traits
- ✓ Features a fantastic back-end & exceptional weight/day of age performance

(NB. 50% semen rights owned Terraneil/Bendulla Studs)

Feb 2022 GROUP BREEDPLAN EBV's

CALVING EASE				GROWTH & MATERNAL				
Calving Ease DIR (%)	Calving Ease DTRS (%)	Gestation Length (days)	Birth Weight	200-Day Growth	400-Day Weight	600-Day Weight	Mat Cow Weight	Genetic Milk
+3.5	+0.5	-1.9	+4.2	+49	+80	+103	+71	+21
81%	69%	96%	97%	94%	94%	94%	86%	79%

FERTILITY		CARCASS						
Scrotal Size (cm)	Days to Calving	Carc Weight	EMA (sq cm)	Rib Fat (mm)	Rump Fat (mm)	RBV (%)	IMF (%)	Trial Docility
+4.8	-5.6	+79	+6.2	+1.6	+2.3	+0.8	+1.1	+11
95%	66%	84%	76%	80%	84%	77%	84%	92%

STRUCTURAL ASSESSMENT						2-Feb-18	Temp.
Front	Back	Front	Back			1-Feb-18	
6	5	5	5	5	5	4	42

INDEX VALUE				Polled Gene	Maturity	Mus Score	EYES	
SSR	NSR	SBM	NBT				Eye Pigment	
\$206	\$195	\$201	\$144	PP Homz	Mid	C+		100/100
							4	

Sire: ALLENDALE ANZAC E114

ALLENDALE PUNTER 3
 ALLENDALE YACKA
 ALLENDALE FLORRIE Z33

ALLENDALE NATIONAL W168
 ALLENDALE DAWN B22 (AI) (ET)
 ALLENDALE DAWN T60 (AI)

GH STOUT LINE ET 87P
 GH ADAMS TARGET 5S (IMP)
 GH MARY MAC 209P (HP)

Dam: WIRRUNA DOREEN G115

MOUNT DIFFICULT UNGAR (S)
 WIRRUNA DOREEN A37
 WIRRUNA DOREEN Y31



Semen Price
\$50/straw

Black highlight: Ranks with top 5% of breed

Grey highlight: Ranks with top 20% of breed

F214**Wirruna Fletcher F214****WNAF214****(Wirruna Semen Sires)**

Birth Date: 26-Aug-10
 Society ID: WNAF214
 Horn/Scurs/Poll: Poll

- Sale topping sire (Autumn 2013) with good structure & great body
- A trait leader for short GL, 200D milk + growth, muscle & marbling
- A well proven sire used in the BIN Progeny Test - over 400 progeny
- High \$Index rated amongst the best in the breed - trait leader for 5 traits

(NB. Yavenvale Herefords have 100% possession & 50% semen share)

Feb 2022 GROUP BREEDPLAN EBV's

CALVING EASE				GROWTH & MATERNAL				
Calving Ease DIR (%)	Calving Ease DTRS (%)	Gestation Length (days)	Birth Weight	200-Day Growth	400-Day Weight	600-Day Weight	Mat Cow Weight	Genetic Milk
+7.4	+9.9	-6.6	+4.4	+46	+71	+93	+58	+23
91%	81%	97%	98%	97%	97%	97%	95%	95%

FERTILITY		CARCASE						
Scrotal Size (cm)	Days to Calving	Carc Weight	EMA (sq cm)	Rib Fat (mm)	Rump Fat (mm)	RBV (%)	IMF (%)	Trial Docility
+1.9	-7.2	+66	+5.8	+0.2	-1.9	+1.4	+2.4	+0
96%	80%	94%	91%	92%	94%	88%	93%	94%

STRUCTURAL ASSESSMENT							1-Feb-13	Temp.
							19-Dec-12	
6	6	6	6	6	5	4	44	2

\$INDEX VALUE				Polled Gene	Maturity	Mus Score	EYES	
SSR	NSR	SBM	NBT					Eye Pigment
\$226	\$200	\$226	\$154	Ph Hetz	Late	B-		100/100
							4	

REMITALL HOLLYWOOD 3 7H
 NOOKEN VALERIAN 2
 GL T5 PROFOUND 80U APRIL 37Y (IMP)

Sire: QUAMBY PLAINS STOCKMASTER Y118
 BOWEN TAMBORINE T226
 QUAMBY PLAINS MAGPIE W9
 QUAMBY PLAINS MAGPIE R21

MOUNT DIFFICULT PARAMONT
 MOUNT DIFFICULT UNGAR (S)
 MOUNT DIFFICULT LAST DAY R121

Dam: WIRRUNA LAST DAY B16 (H)
 WIRRUNA WALKER
 WIRRUNA LAST DAY Z152
 WIRRUNA LAST DAY W105



Photo taken: Feb 2013

Semen Price
\$50/straw

Black highlight: Ranks with top 5% of breed

Grey highlight: Ranks with top 20% of breed

February 2022 Hereford BREEDPLAN - Percentile Bands for all 2020 born animals

Use this table as a guide to compare individual animals with the current genetic level of the breed

	Calv-Ease		Birth		Growth					Fert		Carcase					Extra		Indexes				
	Dir	Dtrs	GL	Bwt	200	400	600	Mwt	Milk	SS	DC	Cwt	EMA	Rib	P8	RBY	IMF	Doc	NFI	SSR	NSR	SBM	NBT
	%		days	kg					cm	days	kg	sq.cm	mm		%	kg/day		\$					
High 1%	+12.5	+9.1	-6.7	-1.5	+49	+81	+116	+110	+27	+4.3	-6.7	+77	+7.4	+2.7	+3.7	+2.5	+2.3	+23	-0.36	+217	+207	+224	+163
High 5%	+10.5	+7.2	-4.0	+0.2	+44	+73	+104	+96	+24	+3.5	-5.5	+69	+6.2	+2.1	+2.8	+1.9	+1.7	+17	-0.21	+194	+183	+202	+147
High 10%	+9.1	+6.2	-3.0	+1.1	+42	+69	+98	+90	+22	+3.1	-5.0	+65	+5.5	+1.8	+2.4	+1.7	+1.4	+14	-0.15	+180	+169	+188	+137
High 15%	+8.0	+5.5	-2.4	+1.7	+40	+66	+94	+86	+21	+2.9	-4.6	+62	+5.1	+1.6	+2.1	+1.5	+1.2	+12	-0.11	+170	+159	+177	+129
High 20%	+7.1	+4.9	-2.0	+2.1	+39	+64	+91	+82	+20	+2.7	-4.3	+60	+4.8	+1.4	+1.9	+1.3	+1.1	+10	-0.08	+163	+150	+168	+123
High 25%	+6.2	+4.4	-1.6	+2.5	+38	+63	+89	+79	+20	+2.6	-4.1	+58	+4.6	+1.3	+1.7	+1.2	+0.9	+9	-0.05	+156	+144	+160	+117
High 30%	+5.4	+3.9	-1.3	+2.9	+37	+61	+86	+76	+19	+2.5	-3.9	+57	+4.3	+1.2	+1.5	+1.1	+0.8	+8	-0.03	+151	+137	+154	+113
High 35%	+4.6	+3.5	-1.1	+3.2	+36	+60	+84	+74	+18	+2.4	-3.7	+55	+4.2	+1.1	+1.4	+1.0	+0.8	+7	-0.01	+146	+132	+148	+109
High 40%	+3.9	+3.1	-0.9	+3.5	+35	+58	+82	+71	+18	+2.3	-3.5	+54	+4.0	+1.0	+1.2	+0.9	+0.7	+5	+0.00	+140	+127	+143	+105
High 45%	+3.2	+2.6	-0.7	+3.8	+34	+57	+80	+69	+17	+2.2	-3.3	+53	+3.8	+0.9	+1.1	+0.8	+0.6	+4	+0.01	+136	+122	+138	+102
50%	+2.5	+2.2	-0.5	+4.1	+33	+56	+78	+66	+17	+2.1	-3.1	+51	+3.7	+0.8	+1.0	+0.8	+0.5	+3	+0.02	+132	+118	+133	+98
Low 45%	+1.9	+1.8	-0.3	+4.4	+33	+54	+76	+64	+16	+2.0	-2.9	+50	+3.5	+0.7	+0.8	+0.7	+0.5	+2	+0.03	+128	+113	+128	+95
Low 40%	+1.2	+1.4	-0.1	+4.6	+32	+53	+74	+62	+16	+1.9	-2.7	+49	+3.3	+0.6	+0.7	+0.6	+0.4	+1	+0.04	+124	+109	+123	+91
Low 35%	+0.5	+0.9	+0.1	+4.9	+31	+52	+72	+59	+15	+1.8	-2.5	+47	+3.2	+0.5	+0.6	+0.5	+0.3	+1	+0.06	+119	+104	+118	+87
Low 30%	-0.1	+0.4	+0.3	+5.2	+30	+50	+70	+56	+14	+1.7	-2.3	+46	+3.0	+0.4	+0.4	+0.4	+0.2	+0	+0.07	+114	+99	+113	+83
Low 25%	-0.9	-0.1	+0.5	+5.5	+29	+48	+67	+53	+14	+1.6	-2.0	+44	+2.8	+0.3	+0.2	+0.3	+0.2	-1	+0.08	+109	+94	+107	+79
Low 20%	-1.8	-0.6	+0.8	+5.8	+28	+47	+65	+50	+13	+1.4	-1.8	+42	+2.7	+0.2	+0.1	+0.2	+0.1	-3	+0.09	+103	+88	+101	+75
Low 15%	-2.7	-1.2	+1.0	+6.2	+26	+44	+62	+46	+12	+1.3	-1.5	+40	+2.4	+0.0	-0.1	+0.1	+0.0	-4	+0.11	+97	+81	+94	+69
Low 10%	-4.0	-2.0	+1.4	+6.6	+24	+42	+57	+41	+11	+1.1	-1.1	+38	+2.2	-0.2	-0.4	-0.1	-0.1	-7	+0.13	+88	+73	+85	+63
Low 5%	-5.9	-3.1	+2.0	+7.2	+22	+37	+50	+33	+10	+0.8	-0.6	+33	+1.8	-0.5	-0.8	-0.4	-0.3	-13	+0.17	+75	+60	+71	+53
Low 1%	-10.1	-5.7	+3.4	+8.4	+15	+25	+34	+13	+7	+0.2	+0.2	+23	+1.1	-1.1	-1.6	-0.9	-0.6	-23	+0.28	+48	+37	+43	+32