



**WIRRUNA**  
poll herefords

Contact: Ian Locke  
Wirruna Poll Hereford Stud  
"Spring Valley" Holbrook  
NSW 2644

Phone: (02) 60362877  
Mobile: (0408) 637 267  
Email: [office@wirruna.com](mailto:office@wirruna.com)  
Website: [www.wirruna.com](http://www.wirruna.com)

# WIRRUNA POLL HEREFORDS

## SEMEN SIRES

*Young Guns*

*2021*



Wirruna Poll Hereford Stud  
 IAN & DIANA LOCKE  
 "Spring Valley"  
 Holbrook NSW 2644

ph. 02 6036 2877  
 fx. 02 6036 3060  
 mb. 0408 637 267  
 email office@wirruna.com  
 Website www.wirruna.com

# Wirruna Semen Sires

*Young Guns*

Tag No	Animal Tag	Sire	Jun 2021 GROUP BREEDPLAN EBV's																								Semen Price/straw
			CALVING EASE				GROWTH & MATERNAL					FERTILITY		CARCASS DATA EBV's									INDEX VALUE				
			CED	CEM	GL	BW	200	400	600	MCW	Milk	SS	DC	CW	EMA	Rib Fat	P8 Fat	RBY	IMF	Trial Docility	SSR	NSR	SBM	NBT			
Q036	Wirruna Qantas Q036 (AI)	Wirruna Kalimna K326	+6.4	<b>+4.6</b>	<b>-5.8</b>	+4.8	<b>+51</b>	<b>+82</b>	<b>+113</b>	<b>+84</b>	<b>+26</b>	<b>+5.2</b>	<b>-7.0</b>	<b>+80</b>	<b>+4.1</b>	<b>+2.7</b>	<b>+3.9</b>	-0.5	<b>+2.6</b>	-9	<b>\$233</b>	<b>\$217</b>	<b>\$234</b>	<b>\$169</b>	\$50		
Q090	Wirruna Quamby Q090 (ET)	Wirruna Matty M288	<b>+9.2</b>	<b>+4.9</b>	<b>-6.6</b>	+3.4	<b>+47</b>	<b>+77</b>	<b>+99</b>	+72	+13	<b>+3.7</b>	<b>-3.7</b>	<b>+80</b>	<b>+6.2</b>	<b>+1.5</b>	<b>+2.3</b>	+1.3	<b>+1.9</b>	<b>+13</b>	<b>\$223</b>	<b>\$224</b>	<b>\$234</b>	<b>\$173</b>	\$50		
Q100	Wirruna Quality Q100 (AI)	Wirruna Matty M288	+6.3	<b>+6.1</b>	<b>-6.4</b>	+5.1	<b>+47</b>	<b>+77</b>	<b>+107</b>	+78	+19	<b>+3.3</b>	<b>-3.6</b>	<b>+68</b>	<b>+5.6</b>	<b>+2.1</b>	<b>+2.6</b>	+0.1	<b>+3.8</b>	+5	<b>\$230</b>	<b>\$216</b>	<b>\$236</b>	<b>\$173</b>	\$50		
Q135	Wirruna Quambone Q135 (AI)	Koanui Techno 3062	<b>+7.9</b>	<b>+7.1</b>	<b>-2.2</b>	+3.8	<b>+43</b>	<b>+78</b>	<b>+105</b>	+74	<b>+27</b>	<b>+2.3</b>	<b>-5.4</b>	<b>+80</b>	<b>+6.3</b>	<b>+1.7</b>	<b>+1.6</b>	+1.0	<b>+2.4</b>	+4	<b>\$230</b>	<b>\$211</b>	<b>\$238</b>	<b>\$172</b>	\$50		
Q266	Wirruna Querido Q266 (AI)	EFB Validated B413	+6.4	+4.3	+0.7	+3.4	<b>+43</b>	<b>+71</b>	<b>+91</b>	+56	+19	<b>+3.1</b>	<b>-4.4</b>	<b>+62</b>	<b>+6.8</b>	<b>+1.7</b>	<b>+1.2</b>	+0.2	<b>+3.1</b>	+2	<b>\$209</b>	<b>\$193</b>	<b>\$211</b>	<b>\$153</b>	\$50		
Q281	Wirruna Quarter Back Q281	Wirruna New Era N068	+6.5	+2.5	<b>-3.3</b>	+3.6	+37	<b>+78</b>	<b>+103</b>	+73	+15	<b>+5.2</b>	<b>-5.0</b>	<b>+73</b>	<b>+6.6</b>	<b>+1.8</b>	<b>+2.5</b>	+0.8	<b>+2.2</b>	<b>+11</b>	<b>\$226</b>	<b>\$216</b>	<b>\$226</b>	<b>\$162</b>	\$50		
Q283	Wirruna Quickstep Q283	Wirruna Morris M404	+4.5	+2.8	-0.7	+5.4	<b>+39</b>	<b>+70</b>	<b>+95</b>	+73	+17	<b>+3.6</b>	<b>-5.7</b>	<b>+65</b>	<b>+9.0</b>	<b>+1.1</b>	<b>+1.2</b>	<b>+1.5</b>	<b>+2.8</b>	-11	<b>\$212</b>	<b>\$200</b>	<b>\$207</b>	<b>\$151</b>	\$50		
P041	Wirruna Prize Fighter P041 (ET)	Orari Gorge Mischief	<b>+7.8</b>	+3.1	<b>-6.0</b>	+3.4	+36	<b>+65</b>	<b>+85</b>	+71	+14	<b>+3.6</b>	<b>-7.8</b>	<b>+69</b>	<b>+7.4</b>	<b>+2.2</b>	<b>+3.5</b>	<b>+1.4</b>	+0.7	<b>+15</b>	<b>\$200</b>	<b>\$203</b>	<b>\$199</b>	<b>\$144</b>	\$50		
P054	Wirruna Pilot P054 (AI)	Wirruna Kalimna K326	<b>+10.5</b>	<b>+7.9</b>	<b>-6.3</b>	+1.5	<b>+41</b>	<b>+71</b>	<b>+88</b>	+58	<b>+24</b>	<b>+6.0</b>	<b>-7.8</b>	<b>+69</b>	<b>+4.4</b>	<b>+3.2</b>	<b>+4.3</b>	-1.3	<b>+2.3</b>	<b>+13</b>	<b>\$209</b>	<b>\$199</b>	<b>\$219</b>	<b>\$157</b>	\$50		
P149	Wirruna Papa P149 (AI)	Koanui Techno 3062	<b>+8.2</b>	<b>+6.9</b>	<b>-3.3</b>	+4.5	+37	<b>+73</b>	<b>+104</b>	<b>+83</b>	<b>+20</b>	<b>+3.7</b>	<b>-4.6</b>	<b>+74</b>	<b>+6.9</b>	<b>+1.3</b>	<b>+1.8</b>	<b>+2.3</b>	<b>+1.4</b>	<b>+14</b>	<b>\$225</b>	<b>\$216</b>	<b>\$235</b>	<b>\$169</b>	\$50		
P239	Wirruna Promise P239 (AI)	Wirruna Kalimna K326	<b>+8.5</b>	<b>+4.8</b>	-1.2	+1.9	<b>+42</b>	<b>+78</b>	<b>+101</b>	+70	<b>+27</b>	<b>+6.7</b>	<b>-7.5</b>	<b>+74</b>	<b>+4.3</b>	<b>+1.6</b>	<b>+2.2</b>	+0.0	<b>+2.5</b>	+7	<b>\$226</b>	<b>\$210</b>	<b>\$230</b>	<b>\$168</b>	\$50		
Breed Ave. '19 drop			+2.0	+1.8	-0.6	+4.1	+33	+55	+78	+67	+16	+2.0	-2.9	+50	+3.6	+0.7	+0.8	+0.8	+0.5	+3	\$129	\$115	\$130	\$96	+ GST		

## Improve your beef herd profitability with Wirruna Poll Hereford genetics .....

- Disciplined Approach to Breeding**  
*All cows must raise live unassisted calf at 2 yrs and rejoin annually in strict 6 week joining period to remain in herd*
- High level Performance Program**  
*All cattle assessed in large management groups and run at high stocking rates to screen commercially acceptable genetics  
 Recognised as one of the leading Breedplan performance recorded herds in Australia*
- Breed leading genetics**  
*All 2020 Wirruna born calves average in top 5% of the breed for all \$Indices*

**Q036****Wirruna Qantas Q036 (AI)****WNAQ036****(Wirruna Semen Sires)**

Birth Date: 5-Aug-19  
 Society ID: WNAQ036  
 Horn/Scurs/Poll: Homozygous Poll (Poll Gene test)

- A new Kalimna son to drive herd performance - top \$Index for profit
- Highest fat & 3rd highest marbling scan out of over 200 contemporaries
- Excellent structure & attractive phenotype compliments strong EBV profile
- Used heavily at Wirruna to capture his unique set of breed leading traits



## Jun 2021 GROUP BREEDPLAN EBV's

CALVING EASE				GROWTH & MATERNAL				
Calving Ease DIR (%)	Calving Ease DTRS (%)	Gestation Length (days)	Birth Weight	200-Day Growth	400-Day Weight	600-Day Weight	Mat Cow Weight	Genetic Milk
+6.4	<b>+4.6</b>	<b>-5.8</b>	+4.8	<b>+51</b>	<b>+82</b>	<b>+113</b>	<b>+84</b>	<b>+26</b>
52%	42%	75%	73%	70%	70%	72%	68%	63%

FERTILITY		CARCASE						
Scrotal Size (cm)	Days to Calving	Carc Weight	EMA (sq cm)	Rib Fat (mm)	Rump Fat (mm)	RBV (%)	IMF (%)	Trial Docility
<b>+5.2</b>	<b>-7.0</b>	<b>+80</b>	+4.1	<b>+2.7</b>	<b>+3.9</b>	-0.5	<b>+2.6</b>	-9
78%	46%	66%	58%	64%	66%	56%	64%	56%

STRUCTURAL ASSESSMENT							18-Jun-21	Temp.
							16-Jun-21	
6	5	5	6	5	5	4	44	2

INDEX VALUE				Polled Gene	Maturity	Mus Score	EYES	
SSR	NSR	SBM	NBT					Eye Pigment
<b>\$233</b>	<b>\$217</b>	<b>\$234</b>	<b>\$169</b>	<b>PP</b> Homz	Mid	C+		100/100
							4	

Sire: **WIRRUNA KALIMNA K326**

WIRRUNA EXPLORER E188  
 WIRRUNA HARTWIG H297  
 WIRRUNA MIDGE A51

ARDO HUSTLER 4110 (IMP)  
 WIRRUNA CORA H303  
 WIRRUNA CORA D9

MATARIKI HOLY-SMOKE  
 WIRRUNA KEITH K169  
 WIRRUNA DIDO F397

Dam: **WIRRUNA LETITIA M367**

WIRRUNA ECHUCA E99  
 WIRRUNA LETITIA J135  
 WIRRUNA LETITIA E4



**Semen Price**  
**\$50/straw**

Black highlight: Ranks with top 5% of breed

Grey highlight: Ranks with top 20% of breed

**Q090****Wirruna Quamby Q090 (ET)****WNAQ090****(Wirruna Semen Sires)**

Birth Date: 9-Aug-19  
 Society ID: WNAQ090  
 Horn/Scurs/Poll: Homozygous Poll (Poll Gene test)

- Curve-bending EBV profile by Super Sire Matty, out of a proven Donor cow
- Calves born easily & early (Short Gestation) - with good early growth
- He combines high CWT, muscle & marbling to boost carcass performance
- Used over heifers, this fellow achieved top-end EMA scan & weight gains

*(NB. NZ Semen rights owned by Shrimpton's Hill Herefords)***Easy-calve**

Jun 2021 GROUP BREEDPLAN EBV's

CALVING EASE				GROWTH & MATERNAL				
Calving Ease DIR (%)	Calving Ease DTRS (%)	Gestation Length (days)	Birth Weight	200-Day Growth	400-Day Weight	600-Day Weight	Mat Cow Weight	Genetic Milk
+9.2	+4.9	-6.6	+3.4	+47	+77	+99	+72	+13
57%	47%	70%	75%	73%	73%	74%	68%	62%

FERTILITY		CARCASS						Trial Docility
Scrotal Size (cm)	Days to Calving	Carc Weight	EMA (sq cm)	Rib Fat (mm)	Rump Fat (mm)	RBV (%)	IMF (%)	
+3.7	-3.7	+80	+6.2	+1.5	+2.3	+1.3	+1.9	+13
78%	48%	68%	61%	65%	68%	59%	67%	62%

STRUCTURAL ASSESSMENT							18-Jun-21	Temp.
							16-Jun-21	
7	6	6	6	5	5	4	39	1

INDEX VALUE				Polled Gene	Maturity	Mus Score	EYES	
SSR	NSR	SBM	NBT					Eye Pigment
\$223	\$224	\$234	\$173	<b>PP</b> Homz	Mid	C+		100/100
							4	

**Sire: WIRRUNA MATTY M288**

ALLENDALE YACKA  
 ALLENDALE ANZAC E114  
 ALLENDALE DAWN B22 (AI) (ET)

ELITE 4110 E212  
 WIRRUNA CIRCLE H13  
 WIRRUNA CIRCLE F31

MOUNT DIFFICULT FELLIS Y12 (AI)  
 WIRRUNA DAFFY D1  
 MOUNT DIFFICULT LAST DAY A205

**Dam: WIRRUNA VICTORIA G7**

ALLENDALE NATIONAL W168  
 WIRRUNA VICTORIA E112  
 SOUTH BUKALONG VICTORIA 202



**Semen Price**  
**\$50/straw**

Black highlight: Ranks with top 5% of breed

Grey highlight: Ranks with top 20% of breed



**Q100****Wirruna Quality Q100 (AI)****WNAQ100****(Wirruna Semen Sires)**

Birth Date: 9-Aug-19  
 Society ID: WNAQ100  
 Horn/Scurs/Poll: Homozygous Poll (Poll Gene test)

- Few in the breed can match "Quality Q100" for marbling & B- muscling
- Offers top 5% growth traits, without compromising calving ease traits
- Short gestation length EBV, for early born calves, promotes easier calving
- I rate this Matty son for his high ranking IMF% EBV & \$Index values

*(NB. NZ qualified Semen to be collected)*

Jun 2021 GROUP BREEDPLAN EBV's

CALVING EASE				GROWTH & MATERNAL				
Calving Ease DIR (%)	Calving Ease DTRS (%)	Gestation Length (days)	Birth Weight	200-Day Growth	400-Day Weight	600-Day Weight	Mat Cow Weight	Genetic Milk
+6.3	<b>+6.1</b>	<b>-6.4</b>	+5.1	<b>+47</b>	<b>+77</b>	<b>+107</b>	+78	+19
51%	40%	77%	74%	71%	71%	72%	66%	60%

FERTILITY		CARCASE						
Scrotal Size (cm)	Days to Calving	Carc Weight	EMA (sq cm)	Rib Fat (mm)	Rump Fat (mm)	RBV (%)	IMF (%)	Trial Docility
<b>+3.3</b>	-3.6	<b>+68</b>	<b>+5.6</b>	<b>+2.1</b>	<b>+2.6</b>	+0.1	<b>+3.8</b>	+5
77%	43%	65%	57%	62%	65%	56%	64%	56%

STRUCTURAL ASSESSMENT								29-Sep-20	Temp.
								9-Apr-21	
6	5	6	6	5	5	4	39	2	

INDEX VALUE				Polled Gene	Maturity	Mus Score	EYES	
SSR	NSR	SBM	NBT					Eye Pigment
<b>\$230</b>	<b>\$216</b>	<b>\$236</b>	<b>\$173</b>	<b>PP</b> <i>Homz</i>	<i>Mid</i>	<b>B-</b>		<b>100/100</b>
							4	

ALLENDALE YACKA  
 ALLENDALE ANZAC E114  
 ALLENDALE DAWN B22 (AI) (ET)

**Sire: WIRRUNA MATTY M288**

ELITE 4110 E212  
 WIRRUNA CIRCLE H13  
 WIRRUNA CIRCLE F31

WIRRUNA CHEVIOT C280  
 WIRRUNA GABU G134  
 SOUTH BUKALONG VICTORIA 202

**Dam: WIRRUNA JANETTE K54**

WIRRUNA FLETCHER F214  
 WIRRUNA JANETTE H276  
 WIRRUNA JANETTE F166



**Semen Price**  
**\$50/straw**

Black highlight: Ranks with top 5% of breed

Grey highlight: Ranks with top 20% of breed

**Q135****Wirruna Quambone Q135 (AI)****WNAQ135****(Wirruna Semen Sires)**

Birth Date: 11-Aug-19  
 Society ID: WNAQ135  
 Horn/Scurs/Poll: Homozygous Poll (Poll Gene test)

- Techno son with curve bending growth, positive CE and moderate MCW
- Improve carcase attributes with top 1% CWT, IMF% & top 5% EMA EBVs
- Maternal strength via proven Dam, producing 3 Wirruna sires out of 7 calves
- I admire this fellows body length, shape & profitable balance of traits

*Easy-calve*

Jun 2021 GROUP BREEDPLAN EBV's

CALVING EASE				GROWTH & MATERNAL				
Calving Ease DIR (%)	Calving Ease DTRS (%)	Gestation Length (days)	Birth Weight	200-Day Growth	400-Day Weight	600-Day Weight	Mat Cow Weight	Genetic Milk
+7.9	+7.1	-2.2	+3.8	+43	+78	+105	+74	+27
55%	48%	75%	73%	70%	70%	71%	67%	64%

FERTILITY		CARCASE						Trial Docility
Scrotal Size (cm)	Days to Calving	Carc Weight	EMA (sq cm)	Rib Fat (mm)	Rump Fat (mm)	RBV (%)	IMF (%)	
+2.3	-5.4	+80	+6.3	+1.7	+1.6	+1.0	+2.4	+4
78%	48%	65%	57%	61%	65%	57%	63%	56%

STRUCTURAL ASSESSMENT							18-Jun-21	Temp.
Front	Back	Front	Back				16-Jun-21	
6	6	6	6	5	5	4	41	1

INDEX VALUE				Polled Gene	Maturity	Mus Score	EYES	
SSR	NSR	SBM	NBT					Eye Pigment
\$230	\$211	\$238	\$172	<b>PP</b> Homz	Mid	C+		100/100
							4	

**Sire: KOANUI TECHNO 3062**

KOANUI UNANIMOUS 7174  
 KOANUI UNANIMOUS 0408  
 KOANUI GIRLIE 3048

LEELANDS X-TENSION 293  
 KOANUI BLUSH 6455  
 KOANUI BLUSH 3304

QUAMBY PLAINS STOCKMASTER Y114  
 WIRRUNA FLETCHER F214  
 WIRRUNA LAST DAY B16 (H)

**Dam: WIRRUNA LAST DAY H364**

SOUTH BUKALONG WALLACE 2  
 WIRRUNA LAST DAY F14  
 WIRRUNA LAST DAY D34



Photo taken: May 2021

**Semen Price**  
**\$50/straw**

Black highlight: Ranks with top 5% of breed

Grey highlight: Ranks with top 20% of breed

**Q266****Wirruna Querido Q266 (AI)****WNAQ266****(Wirruna Semen Sires)**

Birth Date: 20-Aug-19  
 Society ID: WNAQ266  
 Horn/Scurs/Poll: Homozygous Poll (Poll Gene test)

- Highly rated Wirruna Sire by EFB Validated - the highest marbling US Sire
- He carries both carcase quantity (top 5% EMA) & quality (top 1% IMF%)
- Offers strong calving ease, good early growth & moderate MCW EBVs
- I think this fellow is very well put together & offers outcross genetics

*Easy-calve*

Jun 2021 GROUP BREEDPLAN EBV's

CALVING EASE				GROWTH & MATERNAL				
Calving Ease DIR (%)	Calving Ease DTRS (%)	Gestation Length (days)	Birth Weight	200-Day Growth	400-Day Weight	600-Day Weight	Mat Cow Weight	Genetic Milk
+6.4	+4.3	+0.7	+3.4	<b>+43</b>	<b>+71</b>	<b>+91</b>	+56	+19
42%	31%	76%	74%	69%	69%	70%	65%	60%

FERTILITY		CARCASE						Trial Docility
Scrotal Size (cm)	Days to Calving	Carc Weight	EMA (sq cm)	Rib Fat (mm)	Rump Fat (mm)	RBV (%)	IMF (%)	
<b>+3.1</b>	<b>-4.4</b>	<b>+62</b>	<b>+6.8</b>	<b>+1.7</b>	+1.2	+0.2	<b>+3.1</b>	+2
77%	39%	61%	53%	58%	60%	52%	59%	52%

STRUCTURAL ASSESSMENT							18-Jun-21	Temp.
							16-Jun-21	
7	6	5	6	5	5	3	36	2

INDEX VALUE				Polled Gene	Maturity	Mus Score	EYES	
SSR	NSR	SBM	NBT					Eye Pigment
<b>\$209</b>	<b>\$193</b>	<b>\$211</b>	<b>\$153</b>	<b>PP</b> <i>Homz</i>	<i>Mid</i>	<b>C+</b>		<b>100/100</b>
							4	

*EFBEEF FOREMOST U208 (IMP)*  
*EFBEEF TFL U208 TESTED X651*  
*EFBEEF P606 MABEL R415*

**Sire: EFBEEF BR VALIDATED B413**

*MSU TCF REVOLUTION 4R*  
*EFBEEF 4R THYRA Y865*  
*EFBEEF N014 THYRA S645*

*QUAMBY PLAINS STOCKMASTER Y114*  
*WIRRUNA FLETCHER F214*  
*WIRRUNA LAST DAY B16 (H)*

**Dam: CO-OP5 URSULA J427**

*WIRRUNA COMET C90*  
*WIRRUNA URSULA E278*  
*WIRRUNA URSULA A241*



**Semen Price**  
**\$50/straw**

Black highlight: Ranks with top 5% of breed

Grey highlight: Ranks with top 20% of breed



**Q281****Wirruna Quarter Back Q281****WNAQ281****(Wirruna Semen Sires)**

Birth Date: 22-Aug-19  
 Society ID: WNAQ281  
 Horn/Scurs/Poll: Homozygous Poll (Poll Gene test)

- Wirruna sire, long-necked for calving ease, with great carcass
- Carcass weight, Eye Muscle Area & Marbling in top 5% of breed
- Top 1% ranking for \$Index values reflects excellent profit driving traits
- Top 5% 400D growth, from a calving ease base & moderate cow weights

*Easy-calve*

Jun 2021 GROUP BREEDPLAN EBV's

CALVING EASE				GROWTH & MATERNAL				
Calving Ease DIR (%)	Calving Ease DTRS (%)	Gestation Length (days)	Birth Weight	200-Day Growth	400-Day Weight	600-Day Weight	Mat Cow Weight	Genetic Milk
+6.5	+2.5	<b>-3.3</b>	+3.6	+37	<b>+78</b>	<b>+103</b>	+73	+15
44%	36%	60%	70%	65%	65%	66%	62%	56%

FERTILITY		CARCASS						Trial Docility
Scrotal Size (cm)	Days to Calving	Carc Weight	EMA (sq cm)	Rib Fat (mm)	Rump Fat (mm)	RBV (%)	IMF (%)	
<b>+5.2</b>	<b>-5.0</b>	<b>+73</b>	<b>+6.6</b>	<b>+1.8</b>	<b>+2.5</b>	+0.8	<b>+2.2</b>	<b>+11</b>
76%	39%	57%	48%	55%	59%	51%	56%	48%

STRUCTURAL ASSESSMENT								29-Sep-20	Temp.
								9-Apr-21	
6	5	5	6	5	5	4	41	1	

\$INDEX VALUE				Polled Gene	Maturity	Mus Score	EYES	
SSR	NSR	SBM	NBT					Eye Pigment
<b>\$226</b>	<b>\$216</b>	<b>\$226</b>	<b>\$162</b>	<b>PP</b> <i>Homz</i>	<i>Mid</i>	<b>C+</b>		<b>100/100</b>
							4	

**Sire: WIRRUNA NEW ERA N068**

ALLENDALE YACKA  
 ALLENDALE ANZAC E114  
 ALLENDALE DAWN B22 (AI) (ET)

WIRRUNA CANDIDATE C118  
 WIRRUNA CORA E319  
 WIRRUNA CORA B38

NITHDALE JACKAL 090029  
 ORARI GORGE MISCHIEF 120083  
 NITHDALE LESLIE 090020

**Dam: WIRRUNA CIRCLE N138**

WIRRUNA JANSEN J143  
 WIRRUNA CIRCLE L421  
 WIRRUNA CIRCLE H13

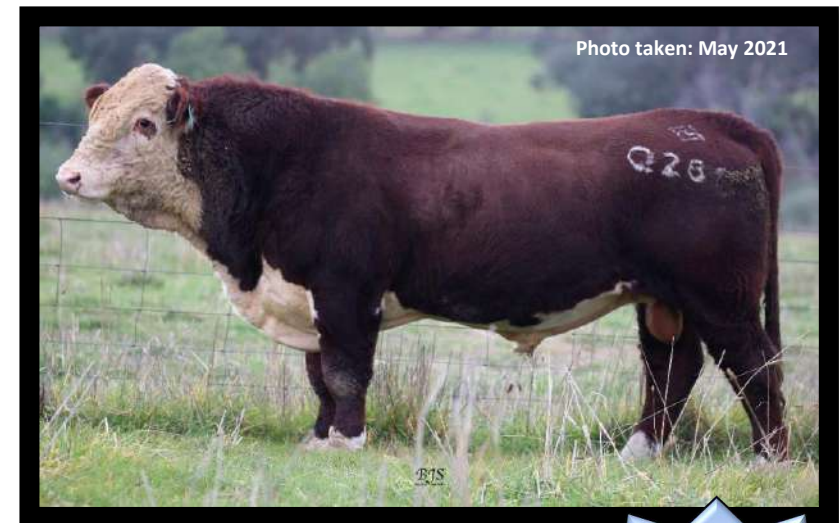


Photo taken: May 2021



Black highlight: Ranks with top 5% of breed

Grey highlight: Ranks with top 20% of breed



**Q283****Wirruna Quickstep Q283****WNAQ283****(Wirruna Semen Sires)**

Birth Date: 21-Aug-19  
 Society ID: WNAQ283  
 Horn/Scurs/Poll: Homozygous Poll (Poll Gene test)

- A growthy & smooth-bodied Wirruna sire with exceptional B- muscling
- Consider his combination of top 1% muscle & marbling for high MSA Index
- Top 5% fertility-stayer cows throughout pedigree including A10, E319 & G7
- Top-end carcass scans for EMA & IMF% support his carcass EBV credentials



Jun 2021 GROUP BREEDPLAN EBV's

CALVING EASE				GROWTH & MATERNAL				
Calving Ease DIR (%)	Calving Ease DTRS (%)	Gestation Length (days)	Birth Weight	200-Day Growth	400-Day Weight	600-Day Weight	Mat Cow Weight	Genetic Milk
+4.5	+2.8	-0.7	+5.4	<b>+39</b>	<b>+70</b>	<b>+95</b>	+73	+17
42%	34%	58%	72%	67%	67%	68%	63%	56%

FERTILITY		CARCASS						Trial Docility
Scrotal Size (cm)	Days to Calving	Carc Weight	EMA (sq cm)	Rib Fat (mm)	Rump Fat (mm)	RBV (%)	IMF (%)	
<b>+3.6</b>	<b>-5.7</b>	<b>+65</b>	<b>+9.0</b>	+1.1	+1.2	<b>+1.5</b>	<b>+2.8</b>	-11
76%	40%	59%	50%	56%	60%	52%	58%	51%

STRUCTURAL ASSESSMENT							18-Jun-21	Temp.
							16-Jun-21	
7	7	6	6	5	5	4	42	1

INDEX VALUE				Polled Gene	Maturity	Mus Score	EYES	
SSR	NSR	SBM	NBT					Eye Pigment
<b>\$212</b>	<b>\$200</b>	<b>\$207</b>	<b>\$151</b>	<b>PP</b> Homz	Late	B-		100/100
							4	

**Sire: WIRRUNA MORRIS M404**

MSU TCF REVOLUTION 4R  
 KCF BENNETT REVOLUTION X51  
 KCF MISS PROFICIENT U201

WIRRUNA CANDIDATE C118  
 WIRRUNA CORA E319  
 WIRRUNA CORA B38

SOUTH BUKALONG WALLACE 2  
 WIRRUNA JAVA J80  
 WIRRUNA VICTORIA G7

**Dam: WIRRUNA MADAM L111**

ELITE W203 C223  
 CO-OP5 MADAM H23  
 WIRRUNA MADAM A10



**Semen Price**  
**\$50/straw**

Black highlight: Ranks with top 5% of breed

Grey highlight: Ranks with top 20% of breed

**P041****Wirruna Prize Fighter P041 (ET)****WNAP041****(Wirruna Semen Sires)**

Birth Date: 5-Aug-18  
 Society ID: WNAP041  
 Horn/Scurs/Poll: Homozygous Poll (Poll Gene test)

- A dark-coated calving-ease specialist with well laid-in shoulders
- Top 1% for fertility (DtC EBV) & early born calves (short GL EBV)
- Exhibits good muscling & softness with top 1% EMA & positive fat EBVs
- Out of a high performing Donor Dam by Cadbury - 22 progeny

(NB. NZ Semen rights owned by Shrimpton's Hill Herefords, Cheers family have 100% possession & 50% semen share )

**Easy-calve**

Jun 2021 GROUP BREEDPLAN EBV's

CALVING EASE				GROWTH & MATERNAL				
Calving Ease DIR (%)	Calving Ease DTRS (%)	Gestation Length (days)	Birth Weight	200-Day Growth	400-Day Weight	600-Day Weight	Mat Cow Weight	Genetic Milk
+7.8	+3.1	<b>-6.0</b>	+3.4	+36	<b>+65</b>	+85	+71	+14
66%	49%	68%	84%	80%	75%	76%	70%	65%

FERTILITY		CARCASE						
Scrotal Size (cm)	Days to Calving	Carc Weight	EMA (sq cm)	Rib Fat (mm)	Rump Fat (mm)	RBV (%)	IMF (%)	Trial Docility
<b>+3.6</b>	<b>-7.8</b>	<b>+69</b>	<b>+7.4</b>	<b>+2.2</b>	<b>+3.5</b>	<b>+1.4</b>	+0.7	<b>+15</b>
77%	44%	66%	54%	59%	63%	56%	62%	72%

STRUCTURAL ASSESSMENT								23-Dec-20	Temp.
								14-Dec-20	
6	6	6	6	6	5	5	40	1	

INDEX VALUE				Polled Gene	Maturity	Mus Score	EYES	
SSR	NSR	SBM	NBT					Eye Pigment
<b>\$200</b>	<b>\$203</b>	<b>\$199</b>	<b>\$144</b>	<b>PP</b> Homz	Mid	B-		100/100
							4	

SOUTH BUKALONG SHANNON 40  
 NITHDALE JACKAL 090029  
 NITHDALA AMETHYST 040070

**Sire: ORARI GORGE MISCHIEF 120083**

NITHDALE HEATH 070113  
 NITHDALE LESLIE 090020  
 NITHDALE LESLIE 070064

KOANUI ROCKET 0219  
 MOUNT DIFFICULT CADBURY  
 MOUNT DIFFICULT MONIQUE V65

**Dam: WIRRUNA LAST DAY J5**

YARRAM LOTTERY X122 (H)  
 CO-OP5 LAST DAY G26  
 WIRRUNA LAST DAY Y75



**Semen Price \$50/straw**

Black highlight: Ranks with top 5% of breed

Grey highlight: Ranks with top 20% of breed

**P054****Wirruna Pilot P054 (AI)****WNAP054****(Wirruna Semen Sires)**

Birth Date: 5-Aug-18  
 Society ID: WNAP054  
 Horn/Scurs/Poll: Homozygous Poll (Poll Gene test)

- Top of the drop Kalimna son - Selected as HAL Super Sire
- A real curve-bender-good growth from an easy calving genetic base
- Ideal carcase attributes - quantity (top 5% CWT) & quality (top 1% IMF%)
- A high \$Index sire with top 1% fertility traits & soft muscling

*(NB. 50% semen rights owned by McIntosh family)***Easy-calve**

Jun 2021 GROUP BREEDPLAN EBV's

CALVING EASE				GROWTH & MATERNAL				
Calving Ease DIR (%)	Calving Ease DTRS (%)	Gestation Length (days)	Birth Weight	200-Day Growth	400-Day Weight	600-Day Weight	Mat Cow Weight	Genetic Milk
<b>+10.5</b>	<b>+7.9</b>	<b>-6.3</b>	<b>+1.5</b>	<b>+41</b>	<b>+71</b>	<b>+88</b>	<b>+58</b>	<b>+24</b>
68%	50%	81%	88%	83%	78%	78%	71%	64%

FERTILITY		CARCASE						
Scrotal Size (cm)	Days to Calving	Carc Weight	EMA (sq cm)	Rib Fat (mm)	Rump Fat (mm)	RBV (%)	IMF (%)	Trial Docility
<b>+6.0</b>	<b>-7.8</b>	<b>+69</b>	<b>+4.4</b>	<b>+3.2</b>	<b>+4.3</b>	<b>-1.3</b>	<b>+2.3</b>	<b>+13</b>
78%	48%	71%	61%	65%	68%	58%	66%	76%

STRUCTURAL ASSESSMENT								23-Dec-20	Temp.
								14-Dec-20	
7	5	5	5	5	5	4	42	1	

INDEX VALUE				Polled Gene	Maturity	Mus Score	EYES	
SSR	NSR	SBM	NBT					Eye Pigment
<b>\$209</b>	<b>\$199</b>	<b>\$219</b>	<b>\$157</b>	<b>PP</b> <i>Homz</i>	<i>Mid</i>	<b>C+</b>		<b>100/100</b>
							4	

**Sire: WIRRUNA KALIMNA K326**

WIRRUNA EXPLORER E188  
 WIRRUNA HARTWIG H297  
 WIRRUNA MIDGE A51

ARDO HUSTLER 4110 (IMP)  
 WIRRUNA CORA H303  
 WIRRUNA CORA D9

ALLENDALE YACKA  
 ALLENDALE ANZAC E114  
 ALLENDALE DAWN B22 (AI) (ET)

**Dam: WIRRUNA CLARA M239**

SOUTH BUKALONG SHANNON 40  
 WIRRUNA CLARA F438  
 PINE HILL CLARA B585



**Semen Price**  
**\$50/straw**

Black highlight: Ranks with top 5% of breed

Grey highlight: Ranks with top 20% of breed



**P149****Wirruna Papa P149 (AI)****WNAP149****(Wirruna Semen Sires)**

Birth Date: 10-Aug-18  
 Society ID: WNAP149  
 Horn/Scurs/Poll: Homozygous Poll (Poll Gene test)

- Papa is a classy, good-barrelled sire by Koanui Techno
- Appreciate his good growth without compromising the calving ease traits
- A high libido bull with high semen quality
- Few bulls can boast higher \$indicies to boost profit potential

*(NB. Glendan Park Herefords have 100% possession & 50% semen share)*

Jun 2021 GROUP BREEDPLAN EBV's

CALVING EASE				GROWTH & MATERNAL				
Calving Ease DIR (%)	Calving Ease DTRS (%)	Gestation Length (days)	Birth Weight	200-Day Growth	400-Day Weight	600-Day Weight	Mat Cow Weight	Genetic Milk
+8.2	+6.9	-3.3	+4.5	+37	+73	+104	+83	+20
58%	47%	75%	82%	77%	74%	75%	69%	62%

FERTILITY		CARCASE						
Scrotal Size (cm)	Days to Calving	Carc Weight	EMA (sq cm)	Rib Fat (mm)	Rump Fat (mm)	RBV (%)	IMF (%)	Trial Docility
+3.7	-4.6	+74	+6.9	+1.3	+1.8	+2.3	+1.4	+14
77%	47%	65%	55%	60%	64%	55%	62%	66%

STRUCTURAL ASSESSMENT							23-Dec-20	Temp.
Front	Back	Front	Back				14-Dec-20	
6	7	6	7	5	5	3	41	1

INDEX VALUE				Polled Gene	Maturity	Mus Score	EYES	
SSR	NSR	SBM	NBT					Eye Pigment
\$225	\$216	\$235	\$169	<b>PP</b> Homz	Mid	C+		100/100
							4	

KOANUI UNANIMOUS 7174  
 KOANUI UNANIMOUS 0408  
 KOANUI GIRLIE 3048

**Sire: KOANUI TECHNO 3062**

LEELANDS X-TENSION 293  
 KOANUI BLUSH 6455  
 KOANUI BLUSH 3304

MOUNT DIFFICULT CADBURY  
 WIRRUNA JACKAROO J35  
 WIRRUNA MADAM G153

**Dam: WIRRUNA LAST DAY L417**

EFBEEF FOREMOST U208 (IMP)  
 WIRRUNA LAST DAY J438  
 WIRRUNA LAST DAY D84



Photo taken: Jan 2021

**Semen Price**  
**\$50/straw**

Black highlight: Ranks with top 5% of breed

Grey highlight: Ranks with top 20% of breed



**P239****Wirruna Promise P239 (AI)****WNAP239****(Wirruna Semen Sires)**

Birth Date: 15-Aug-18  
 Society ID: WNAP239  
 Horn/Scurs/Poll: Homozygous Poll (Poll Gene test)

- Nice bodied & sound sire with top 1% ranking for all \$indices
- Few sires offer this stretch between low birthweight and high growth
- Exceptional Fertility traits - Top-end SS & DtC EBVs and positive fats
- Excellent carcass quality with top 1% marbling

*Easy-calve*

Jun 2021 GROUP BREEDPLAN EBV's

CALVING EASE				GROWTH & MATERNAL				
Calving Ease DIR (%)	Calving Ease DTRS (%)	Gestation Length (days)	Birth Weight	200-Day Growth	400-Day Weight	600-Day Weight	Mat Cow Weight	Genetic Milk
+8.5	+4.8	-1.2	+1.9	+42	<b>+78</b>	<b>+101</b>	+70	<b>+27</b>
63%	48%	83%	86%	80%	76%	77%	72%	64%

FERTILITY		CARCASS						Trial Docility
Scrotal Size (cm)	Days to Calving	Carc Weight	EMA (sq cm)	Rib Fat (mm)	Rump Fat (mm)	RBV (%)	IMF (%)	
<b>+6.7</b>	<b>-7.5</b>	<b>+74</b>	+4.3	<b>+1.6</b>	<b>+2.2</b>	+0.0	<b>+2.5</b>	+7
78%	48%	70%	61%	65%	68%	58%	67%	69%

STRUCTURAL ASSESSMENT								26-Jun-20	Temp.
								19-Jun-20	
6	5	5	5	5	5	4	43	1	

INDEX VALUE				Polled Gene	Maturity	Mus Score	EYES	
SSR	NSR	SBM	NBT					Eye Pigment
<b>\$226</b>	<b>\$210</b>	<b>\$230</b>	<b>\$168</b>	<b>PP</b> Homz	Late	C+		100/95
							3	

Sire: **WIRRUNA KALIMNA K326**

WIRRUNA EXPLORER E188  
 WIRRUNA HARTWIG H297  
 WIRRUNA MIDGE A51

ARDO HUSTLER 4110 (IMP)  
 WIRRUNA CORA H303  
 WIRRUNA CORA D9

ELITE 4110 E212  
 WIRRUNA HERNANDO H47  
 WIRRUNA VICTORIA F203

Dam: **WIRRUNA CIRCLE M183**

MATARIKI HOLY-SMOKE  
 WIRRUNA CIRCLE K95  
 WIRRUNA CIRCLE H13



**Semen Price \$50/straw**

Black highlight: Ranks with top 5% of breed

Grey highlight: Ranks with top 20% of breed

## June 2021 Hereford BREEDPLAN - Percentile Bands for all 2019 born animals

Use this table as a guide to compare individual animals with the current genetic level of the breed

	Calv-Ease				Birth				Growth				Fert				Carcase				Extra				Indexes			
	Dir	Dtrs	%		GL	Bwt	200	400	600	Mwt	Milk	SS	DC	DC	Cwt	EMA	Rib	P8	RBY	IMF	Doc	NFI	SSR	NSR	SBM	NBT		
				days	days		kg	kg	kg	kg	cm	cm	days	days	kg	sq.cm	mm	mm	%	%		kg/day				\$		
High 1%	+12.3	+8.8	-6.7	-1.3	+48	+81	+115	+110	+26	+4.2	-6.5	+76	+7.1	+2.6	+3.7	+2.6	+2.3	+2.3	+2.3	+23	-0.37	+209	+198	+216	+158			
High 5%	+10.2	+6.8	-3.7	+0.4	+44	+73	+103	+97	+23	+3.4	-5.4	+68	+5.9	+2.0	+2.7	+2.0	+1.6	+1.6	+1.6	+18	-0.21	+187	+176	+194	+142			
High 10%	+8.7	+5.8	-2.7	+1.3	+41	+69	+98	+91	+22	+3.1	-4.8	+64	+5.3	+1.7	+2.3	+1.7	+1.3	+1.3	+1.3	+15	-0.16	+174	+163	+180	+132			
High 15%	+7.6	+5.1	-2.2	+1.9	+40	+66	+94	+86	+21	+2.8	-4.5	+61	+5.0	+1.5	+2.0	+1.5	+1.1	+1.1	+1.1	+13	-0.12	+165	+153	+171	+125			
High 20%	+6.6	+4.6	-1.8	+2.4	+39	+64	+91	+83	+20	+2.7	-4.2	+59	+4.7	+1.3	+1.7	+1.4	+1.0	+1.0	+1.0	+11	-0.09	+158	+146	+163	+119			
High 25%	+5.7	+4.1	-1.5	+2.8	+37	+62	+88	+80	+19	+2.5	-3.9	+57	+4.4	+1.2	+1.6	+1.2	+0.9	+0.9	+0.9	+10	-0.07	+152	+139	+156	+114			
High 30%	+4.9	+3.6	-1.2	+3.1	+37	+61	+86	+77	+19	+2.4	-3.7	+56	+4.2	+1.1	+1.4	+1.1	+0.8	+0.8	+0.8	+9	-0.04	+146	+133	+150	+110			
High 35%	+4.1	+3.2	-1.0	+3.5	+36	+59	+84	+75	+18	+2.3	-3.5	+54	+4.0	+1.0	+1.2	+1.0	+0.7	+0.7	+0.7	+7	-0.03	+141	+128	+144	+106			
High 40%	+3.4	+2.8	-0.8	+3.7	+35	+58	+82	+72	+17	+2.2	-3.3	+53	+3.8	+0.9	+1.1	+0.9	+0.6	+0.6	+0.6	+6	-0.01	+137	+123	+139	+103			
High 45%	+2.7	+2.4	-0.6	+4.0	+34	+57	+80	+70	+17	+2.1	-3.1	+52	+3.7	+0.8	+1.0	+0.8	+0.5	+0.5	+0.5	+5	+0.00	+133	+118	+134	+99			
<b>50%</b>	+2.0	+1.9	-0.4	+4.3	+33	+55	+78	+67	+16	+2.0	-2.9	+50	+3.5	+0.7	+0.8	+0.8	+0.5	+0.5	+0.5	+4	+0.01	+129	+114	+129	+96			
Low 45%	+1.4	+1.5	-0.2	+4.5	+33	+54	+76	+65	+16	+1.9	-2.7	+49	+3.4	+0.6	+0.7	+0.7	+0.4	+0.4	+0.4	+3	+0.02	+124	+109	+125	+92			
Low 40%	+0.7	+1.1	+0.0	+4.8	+32	+53	+74	+63	+15	+1.8	-2.5	+48	+3.2	+0.5	+0.6	+0.6	+0.3	+0.3	+0.3	+1	+0.03	+120	+105	+120	+88			
Low 35%	+0.0	+0.6	+0.2	+5.1	+31	+51	+72	+60	+15	+1.7	-2.3	+46	+3.0	+0.4	+0.4	+0.5	+0.2	+0.2	+0.2	+0	+0.04	+115	+100	+115	+85			
Low 30%	-0.7	+0.2	+0.4	+5.3	+30	+50	+70	+57	+14	+1.6	-2.1	+45	+2.9	+0.3	+0.3	+0.4	+0.2	+0.2	+0.2	-1	+0.05	+111	+95	+109	+81			
Low 25%	-1.4	-0.3	+0.6	+5.6	+29	+48	+67	+54	+13	+1.5	-1.8	+43	+2.7	+0.2	+0.1	+0.3	+0.1	+0.3	+0.1	-3	+0.06	+105	+89	+103	+76			
Low 20%	-2.2	-0.8	+0.8	+5.9	+28	+47	+65	+51	+13	+1.4	-1.6	+42	+2.6	+0.1	-0.1	+0.2	+0.0	+0.2	+0.0	-4	+0.08	+99	+84	+97	+72			
Low 15%	-3.1	-1.4	+1.1	+6.3	+26	+45	+62	+47	+12	+1.3	-1.3	+39	+2.4	-0.1	-0.3	+0.1	-0.1	-0.1	-0.1	-6	+0.09	+92	+77	+90	+67			
Low 10%	-4.4	-2.2	+1.5	+6.7	+25	+42	+57	+42	+11	+1.1	-0.9	+37	+2.1	-0.3	-0.5	-0.1	-0.2	-0.2	-0.2	-9	+0.11	+84	+69	+81	+60			
Low 5%	-6.4	-3.4	+2.0	+7.3	+22	+38	+51	+34	+9	+0.8	-0.5	+33	+1.8	-0.6	-0.9	-0.4	-0.4	-0.4	-0.4	-14	+0.15	+72	+57	+69	+51			
Low 1%	-11.0	-6.1	+3.4	+8.5	+16	+29	+38	+15	+6	+0.2	+0.4	+24	+1.1	-1.2	-1.8	-0.9	-0.7	-0.7	-0.7	-22	+0.25	+52	+37	+42	+30			