



WIRRUNA
poll herefords

Contact: Ian Locke
Wirruna Poll Hereford Stud
"Spring Valley" Holbrook
NSW 2644

Phone: (02) 60362877
Mobile: (0408) 637 267
Email: locke.ian@bigpond.com
Website: www.wirruna.com

WIRRUNA POLL HEREFORDS

SEMEN SIREs

Young Guns

2018



Wirruna Poll Hereford Stud
 IAN & DIANA LOCKE
 "Spring Valley"
 Holbrook NSW 2644

ph. 02 6036 2877
 fx. 02 6036 3060
 mb. 0408 637 267
 email locke.ian@bigpond.com
 Website www.wirruna.com

Wirruna Semen Sires

Young Guns

Tag No	Animal Tag	Sire	July 2018 GROUP BREEDPLAN EBV's																				Black highlight: Ranks with top 5% of breed			
			CALVING EASE				GROWTH & MATERNAL					FERTILITY		CARCASS DATA EBV's									Grey highlight: Ranks with top 20% of breed			
			CED	CEM	GL	BW	200	400	600	MCW	Milk	SS	DC	CW	EMA	Rib Fat	P8 Fat	RBY	IMF	Trial Docility	SM	Grass Fed	Grain Fed	EU Index		
M010	Wirruna Molong M010 (ET)	Wirruna Fletcher F214	+12.2	+10.1	-6.3	-1.2	+34	+61	+81	+54	+22	+2.6	-5.1	+74	+6.6	+0.7	+0.3	+2.0	+1.4	+5	\$145	\$146	\$178	\$164		
M089	Wirruna Midnight M089 (AI)	Mount Difficult Cadbury	+10.2	+5.6	-5.1	+4.3	+46	+79	+108	+100	+19	+3.4	-5.7	+80	+5.9	+1.3	+2.0	+1.6	+0.6	+20	\$154	\$150	\$168	\$169		
M126	Wirruna Manton M126 (AI)	Wirruna Fort F382	+6.6	+6.0	-3.9	+2.5	+41	+65	+94	+75	+19	+3.0	-4.5	+75	+5.3	+0.9	+1.6	+1.2	+1.8	+15	\$146	\$144	\$180	\$162		
M154	Wirruna Malcolm M154 (AI)	Wirruna Justin J13	+9.2	+6.6	-3.5	+1.6	+37	+60	+81	+39	+18	+3.1	-5.3	+64	+6.0	+2.6	+3.7	+0.5	+1.8	+7	\$147	\$149	\$188	\$162		
M175	Wirruna McLaren M175 (AI)	Wirruna Justin J13	+4.4	+1.7	-3.3	+2.8	+44	+77	+99	+63	+14	+2.5	-5.0	+85	+7.4	+1.7	+2.3	+1.5	+1.5	+11	\$151	\$151	\$186	\$168		
M288	Wirruna Matty M288 (ET)	Allendale Anzac E114	+6.2	+3.9	-3.5	+1.5	+40	+69	+97	+76	+17	+3.0	-1.9	+76	+5.0	+1.8	+2.4	-0.6	+3.1	+18	\$141	\$140	\$191	\$152		
M417	Wirruna Monopoly M417	Wirruna Keith K169	+4.2	-1.6	-2.0	+2.5	+35	+56	+78	+68	+20	+3.2	-6.0	+65	+5.9	+1.9	+2.8	+0.1	+2.3	-6	\$127	\$128	\$170	\$145		
M433	Wirruna Michelangelo M433	KCF Bennett Revolution	+9.7	+3.7	+0.9	+0.7	+24	+50	+61	+42	+11	+2.9	-4.4	+53	+8.7	+1.7	+1.9	+1.0	+2.0	-4	\$119	\$124	\$164	\$140		
L102	Wirruna Lennon L102 (AI)	Allendale Anzac E114	+2.8	+1.8	-1.6	+4.2	+39	+72	+94	+77	+14	+3.4	-2.3	+70	+7.2	+1.2	+2.0	+0.9	+1.4	+21	\$126	\$124	\$153	\$138		
L249	Wirruna Lazaro L249 (AI)	Tobruk Jedi	-1.9	+0.4	-2.1	+4.4	+44	+77	+106	+104	+12	+3.8	-5.9	+77	+5.1	+1.4	+1.5	+0.9	+1.9	+12	\$138	\$135	\$172	\$156		
L477	Wirruna Lindley L477 (ET)	Otapawa Spark	+5.4	+6.3	-2.9	+4.7	+38	+66	+95	+90	+21	+3.3	-6.3	+63	+3.5	+1.9	+2.7	-0.4	+1.8	-10	\$140	\$138	\$174	\$156		
L545	Wirruna Ladies Man L545 (ET)	Otapawa Spark	+2.9	+5.3	-3.2	+4.9	+36	+62	+97	+96	+16	+2.4	-7.6	+65	+3.8	+2.2	+3.3	-0.1	+1.8	-10	\$144	\$142	\$177	\$161		
Breed Ave. '16 drop			+0.8	+0.9	-0.2	+4.2	+32	+53	+75	+66	+15	+1.8	-2.5	+48	+3.1	+0.4	+0.5	+0.8	+0.3	+3	\$84	\$80	\$90	\$93		

Improve your beef herd profitability with Wirruna Poll Hereford genetics

- Disciplined Approach to Breeding**
All cows must raise live unassisted calf at 2 yrs and rejoin annually in strict 6 week joining period to remain in herd
- High level Performance Program**
*All cattle assessed in large management groups and run at high stocking rates to screen commercially acceptable genetics
 Recognised as one of the leading Breedplan performance recorded herds in Australia*
- Breed leading genetics**
All 2016 Wirruna born calves average in top 5% of the breed for all \$Indices

M010**Wirruna Molong M010 (ET)****WNAM010****(Wirruna Semen Sires)**

Birth Date: 4-Aug-16
 Society ID: WNAM010
 Horn/Scurs/Poll: Poll

- Stylish & ideally shaped calving ease Wirruna sire
- Appreciate his good growth from an excellent calving ease base
- A real carcase improver, combining top 5% RBY% & IMF% with top 1% EMA
- ET calf out of a proven dam, offers sound structure & exceptional \$Index

*Easy-calve*

July 2018 GROUP BREEDPLAN EBV's

CALVING EASE				GROWTH & MATERNAL				
Calving Ease DIR (%)	Calving Ease DTRS (%)	Gestation Length (days)	Birth Weight	200-Day Growth	400-Day Weight	600-Day Weight	Mat Cow Weight	Genetic Milk
+12.2	+10.1	-6.3	-1.2	+34	+61	+81	+54	+22
54%	47%	68%	75%	71%	71%	70%	65%	60%

FERTILITY		CARCASE						
Scrotal Size (cm)	Days to Calving	Carc Weight	EMA (sq cm)	Rib Fat (mm)	Rump Fat (mm)	RBY (%)	IMF (%)	Trial Docility
+2.6	-5.1	+74	+6.6	+0.7	+0.3	+2.0	+1.4	+5
78%	46%	63%	59%	62%	65%	59%	61%	61%

STRUCTURAL ASSESSMENT							25-Jun-18	Temp.
							20-Jun-18	
6	6	6	6	5	5	4	40	1

\$INDEX VALUE				Polled Gene	Maturity	Mus Score	EYES	
Supermarket	Grass Fed	Grain Fed	EU Index	Ph Hetz	<i>Mid</i>	C+		Eye Pigment
\$145	\$146	\$178	\$164				4	100/100

NOOKEN VALERIAN 2
 QUAMBY PLAINS STOCKMASTER Y118
 QUAMBY PLAINS MAGPIE W9

Sire: WIRRUNA FLETCHER F214

MOUNT DIFFICULT UNGAR (S)
 WIRRUNA LAST DAY B16 (H)
 WIRRUNA LAST DAY Z152

KOANUI ROCKET Q334
 KOANUI ROCKET 0219
 KOANUI ANGEL R187

Dam: WIRRUNA CORA D9

MOUNT DIFFICULT FELLIS Y12 (AI)
 WIRRUNA CORA B38
 WIRRUNA CORA U68



Semen Price
\$50/straw

Black highlight: Ranks with top 5% of breed

Grey highlight: Ranks with top 20% of breed

M089**Wirruna Midnight M089 (AI)****WNAM089****(Wirruna Semen Sires)**

Birth Date: 11-Aug-16
 Society ID: WNAM089
 Horn/Scurs/Poll: Homozygous Poll (Poll Gene test)

- Docile, growthy & easy-doing Wirruna Sire by Cadbury
- Top 5% traits across the board to drive your future herd improvement
- A heifer's first calf achieving good weight/day of age & strong EMA scan
- Top 1% \$Indices reflect the great profit potential offered by this Sire

KOANUI ROCKET Q334
 KOANUI ROCKET 0219
 KOANUI ANGEL R187

Sire: MOUNT DIFFICULT CADBURY

YARROW CORK
 MOUNT DIFFICULT MONIQUE V65
 MOUNT DIFFICULT MONIQUE

GH ADAMS TARGET 5S (IMP)
 WIRRUNA HURRICANE H132
 WIRRUNA FLORA D261

Dam: WIRRUNA PAGE K502

ELITE 4110 E212
 WIRRUNA PAGE H75
 WIRRUNA PAGE F309



July 2018 GROUP BREEDPLAN EBV's

CALVING EASE				GROWTH & MATERNAL				
Calving Ease DIR (%)	Calving Ease DTRS (%)	Gestation Length (days)	Birth Weight	200-Day Growth	400-Day Weight	600-Day Weight	Mat Cow Weight	Genetic Milk
+10.2	+5.6	-5.1	+4.3	+46	+79	+108	+100	+19
50%	41%	75%	73%	68%	68%	67%	64%	54%

FERTILITY		CARCASE						
Scrotal Size (cm)	Days to Calving	Carc Weight	EMA (sq cm)	Rib Fat (mm)	Rump Fat (mm)	RYB (%)	IMF (%)	Trial Docility
+3.4	-5.7	+80	+5.9	+1.3	+2.0	+1.6	+0.6	+20
77%	43%	58%	53%	57%	60%	55%	56%	52%

STRUCTURAL ASSESSMENT							25-Jun-18	Temp.
Front	Back	Front	Back				20-Jun-18	
							40	
7	6	6	6	5	5	3		2

INDEX VALUE				Polled Gene	Maturity	Mus Score	EYES	
Supermarket	Grass Fed	Grain Fed	EU Index					Eye Pigment
\$154	\$150	\$168	\$169	PP <i>Homz</i>	<i>Mid</i>	C+		100/100
							3	



Black highlight: Ranks with top 5% of breed
 Grey highlight: Ranks with top 20% of breed

M126**Wirruna Manton M126 (AI)****WNAM126****(Wirruna Semen Sires)**

Birth Date: 12-Aug-16
 Society ID: WNAM126
 Horn/Scurs/Poll: Homozygous Poll (Poll Gene test)

- Fort son with curve-bending growth from a moderate BW & good CE
- Deep bodied sire with sound structure, herd improving carcase & docility
- Top-end \$Index values reflect an exceptional balance of commercial traits
- Dam J124 is an outstanding Donor cow, breeding consistently well

*Easy-calve*

July 2018 GROUP BREEDPLAN EBV's

CALVING EASE				GROWTH & MATERNAL				
Calving Ease DIR (%)	Calving Ease DTRS (%)	Gestation Length (days)	Birth Weight	200-Day Growth	400-Day Weight	600-Day Weight	Mat Cow Weight	Genetic Milk
+6.6	+6.0	-3.9	+2.5	+41	+65	+94	+75	+19
54%	47%	76%	74%	70%	69%	68%	64%	55%

FERTILITY		CARCASE						
Scrotal Size (cm)	Days to Calving	Carc Weight	EMA (sq cm)	Rib Fat (mm)	Rump Fat (mm)	RBV (%)	IMF (%)	Trial Docility
+3.0	-4.5	+75	+5.3	+0.9	+1.6	+1.2	+1.8	+15
78%	44%	59%	55%	57%	61%	56%	58%	57%

STRUCTURAL ASSESSMENT							25-Jun-18	Temp.
							20-Jun-18	
6	6	6	6	5	5	4	39	1

\$INDEX VALUE				Polled Gene	Maturity	Mus Score	EYES	
Supermarket	Grass Fed	Grain Fed	EU Index	PP Homz	<i>Mid</i>	C+		Eye Pigment
\$146	\$144	\$180	\$162				4	100/100

Sire: **WIRRUNA FORT F382**

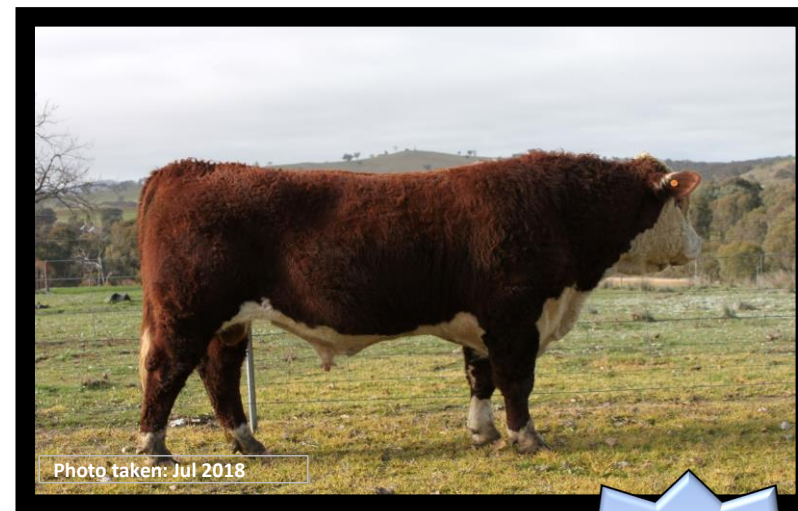
SOUTH BUKALONG WALKER 6
 SOUTH BUKALONG WALLACE 2
 SOUTH BUKALONG VICTORIA 152

MOUNT DIFFICULT FELLIS Y12 (AI)
 MOUNT DIFFICULT LORNA B123
 MOUNT DIFFICULT LORNA X73

STUDBROOK D'ARTAGNION V086 (AI) (OTAPAWA SPARK 3060 (IMP)
 OTAPAWA SPOT P30

Dam: **WIRRUNA CIRCLE J124**

KOANUI ROCKET 0219
 WIRRUNA CIRCLE F31
 WIRRUNA CIRCE D80



Semen Price \$50/straw

Black highlight: Ranks with top 5% of breed

Grey highlight: Ranks with top 20% of breed

M154**Wirruna Malcolm M154 (AI)****WNAM154****(Wirruna Semen Sires)**

Birth Date: 13-Aug-16
 Society ID: WNAM154
 Horn/Scurs/Poll: Homozygous Poll (Poll Gene test)

- An excellent easy-doing & sound Justin son
- Combines carcass quality & quantity - top 5% EMA & top 1% IMF%
- Bends the growth curve offering calving ease & early growth
- Strong fertility traits contribute to the high \$Index values (top 1%)

CAPETHORNE HOT SHOT 03 22
 MATARIKI HOLY-SMOKE
 MATARIKI GIRLIE 00323

Sire: WIRRUNA JUSTIN J13

WIRRUNA ELDAD E107
 WIRRUNA DOREEN G393
 WIRRUNA DOREEN E42

SOUTH BUKALONG WALLACE 2
 WIRRUNA ECHUCA E99
 WIRRUNA GOLDEN VANITY C32

Dam: WIRRUNA MADAM J74

SOUTH BUKALONG WALLACE 2
 WIRRUNA MADAM E325
 WIRRUNA MADAM A10

*Easy-calve*

July 2018 GROUP BREEDPLAN EBV's

CALVING EASE				GROWTH & MATERNAL				
Calving Ease DIR (%)	Calving Ease DTRS (%)	Gestation Length (days)	Birth Weight	200-Day Growth	400-Day Weight	600-Day Weight	Mat Cow Weight	Genetic Milk
+9.2	+6.6	-3.5	+1.6	+37	+60	+81	+39	+18
54%	42%	77%	74%	70%	70%	69%	63%	50%

FERTILITY		CARCASS						
Scrotal Size (cm)	Days to Calving	Carc Weight	EMA (sq cm)	Rib Fat (mm)	Rump Fat (mm)	RBV (%)	IMF (%)	Trial Docility
+3.1	-5.3	+64	+6.0	+2.6	+3.7	+0.5	+1.8	+7
79%	41%	62%	57%	60%	63%	56%	61%	56%

STRUCTURAL ASSESSMENT							25-Jun-18	Temp.
Front	Back	Front	Back				20-Jun-18	
6	6	5	6	5	5	3	39	1

\$INDEX VALUE				Polled Gene	Maturity	Mus Score	EYES	
Supermarket	Grass Fed	Grain Fed	EU Index					Eye Pigment
\$147	\$149	\$188	\$162	PP <i>Homz</i>	<i>Mid</i>	C+		100/100
							4	



Photo taken: Jul 2018

Semen Price
\$50/straw

Black highlight: Ranks with top 5% of breed

Grey highlight: Ranks with top 20% of breed

M175**Wirruna McLaren M175 (AI)****WNAM175****(Wirruna Semen Sires)**

Birth Date: 13-Aug-16
 Society ID: WNAM175
 Horn/Scurs/Poll: Homozygous Poll (Poll Gene test)

- A meaty son of Justin offering high value carcass boosting attributes
- Growthy, with B- muscle, EMA in top 1% & strong marbling for MSA Index
- Combines strong growth, with good CE, to result in top 1% \$Indices
- Phenotype shows good structure, skin & conformation

*Easy-calve*

July 2018 GROUP BREEDPLAN EBV's

CALVING EASE				GROWTH & MATERNAL				
Calving Ease DIR (%)	Calving Ease DTRS (%)	Gestation Length (days)	Birth Weight	200-Day Growth	400-Day Weight	600-Day Weight	Mat Cow Weight	Genetic Milk
+4.4	+1.7	-3.3	+2.8	+44	+77	+99	+63	+14
52%	40%	76%	74%	69%	69%	68%	62%	48%

FERTILITY		CARCASS						
Scrotal Size (cm)	Days to Calving	Carc Weight	EMA (sq cm)	Rib Fat (mm)	Rump Fat (mm)	RYB (%)	IMF (%)	Trial Docility
+2.5	-5.0	+85	+7.4	+1.7	+2.3	+1.5	+1.5	+11
78%	38%	60%	55%	58%	62%	54%	59%	55%

STRUCTURAL ASSESSMENT							25-Jun-18	Temp.
							20-Jun-18	
6	5	5	5	5	5	3	38	2

INDEX VALUE				Polled Gene	Maturity	Mus Score	EYES	
Supermarket	Grass Fed	Grain Fed	EU Index	PP Homz	Mid	C+		Eye Pigment
\$151	\$151	\$186	\$168				4	100/100

CAPETHORNE HOT SHOT 03 22
 MATARIKI HOLY-SMOKE
 MATARIKI GIRLIE 00323

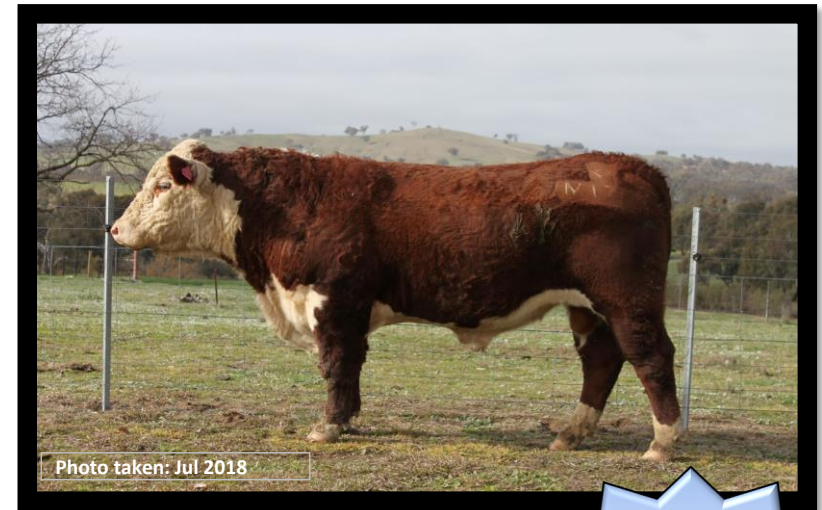
Sire: **WIRRUNA JUSTIN J13**

WIRRUNA ELDAD E107
 WIRRUNA DOREEN G393
 WIRRUNA DOREEN E42

SOUTH BUKALONG WALLACE 2
 WIRRUNA FORT F382
 MOUNT DIFFICULT LORNA B123

Dam: **WIRRUNA LORNA J413**

MOUNT DIFFICULT ACCURATE (AI)
 MOUNT DIFFICULT LORNA C11
 MOUNT DIFFICULT LORNA A65



Black highlight: Ranks with top 5% of breed

Grey highlight: Ranks with top 20% of breed

M288**Wirruna Matty M288 (ET)****WNAM288****(Wirruna Semen Sires)**

Birth Date: 21-Aug-16
 Society ID: WNAM288
 Horn/Scurs/Poll: Homozygous Poll (Poll Gene test)

- Number 1 'M' bull in the breed for marbling - achieved highest IMF% scan
- Top-end 2016 born Hereford bull for Grainfed \$Index
- Appreciate his trait balance-top end CE, growth, docility & great carcass
- His dam is a super Donor cow - consistently producing top-end calves

(NB. Semen rights 100% owned by ABS Global)**Easy-calve**

July 2018 GROUP BREEDPLAN EBV's

CALVING EASE				GROWTH & MATERNAL				
Calving Ease DIR (%)	Calving Ease DTRS (%)	Gestation Length (days)	Birth Weight	200-Day Growth	400-Day Weight	600-Day Weight	Mat Cow Weight	Genetic Milk
+6.2	+3.9	-3.5	+1.5	+40	+69	+97	+76	+17
56%	48%	68%	75%	71%	70%	70%	64%	58%

FERTILITY		CARCASS						
Scrotal Size (cm)	Days to Calving	Carc Weight	EMA (sq cm)	Rib Fat (mm)	Rump Fat (mm)	RBY (%)	IMF (%)	Trial Docility
+3.0	-1.9	+76	+5.0	+1.8	+2.4	-0.6	+3.1	+18
77%	40%	61%	56%	60%	63%	58%	60%	60%

STRUCTURAL ASSESSMENT							2-Feb-18	Temp.
							30-Oct-17	
6	5	5	5	5	5	4	38	1

INDEX VALUE				Polled Gene	Maturity	Mus Score	EYES	
Supermarket	Grass Fed	Grain Fed	EU Index	PP <i>Homz</i>	<i>Mid</i>	B-		Eye Pigment
\$141	\$140	\$191	\$152				4	100/60

Sire: ALLENDALE ANZAC E114
 ALLENDALE PUNTER 3
 ALLENDALE YACKA
 ALLENDALE FLORRIE Z33
 ALLENDALE NATIONAL W168
 ALLENDALE DAWN B22 (AI) (ET)
 ALLENDALE DAWN T60 (AI)
 ARDO HUSTLER 4110 (IMP)
 ELITE 4110 E212
 SOUTH BUKALONG WINIFRED 54

Dam: WIRRUNA CIRCLE H13
 KOANUI ROCKET 0219
 WIRRUNA CIRCLE F31
 WIRRUNA CIRCE D80



Semen Price \$60/straw

Black highlight: Ranks with top 5% of breed
 Grey highlight: Ranks with top 20% of breed

M417**Wirruna Monopoly M417****WNAM417****(Wirruna Semen Sires)**

Birth Date: 29-Aug-16
 Society ID: WNAM417
 Horn/Scurs/Poll: Homozygous Poll (Poll Gene test)

- An attractive phenotype with top-end carcass traits
- Excellent marbling to boost MSA Index performance in steer progeny
- Strong Fertility traits with good scrotal size & Days to Calving EBVs
- Bred to Heifers at Wirruna - 1st calves due Spring 2018

*Easy-calve*

July 2018 GROUP BREEDPLAN EBV's

CALVING EASE				GROWTH & MATERNAL				
Calving Ease DIR (%)	Calving Ease DTRS (%)	Gestation Length (days)	Birth Weight	200-Day Growth	400-Day Weight	600-Day Weight	Mat Cow Weight	Genetic Milk
+4.2	-1.6	-2.0	+2.5	+35	+56	+78	+68	+20
42%	38%	60%	70%	64%	64%	63%	57%	46%

FERTILITY		CARCASS						
Scrotal Size (cm)	Days to Calving	Carc Weight	EMA (sq cm)	Rib Fat (mm)	Rump Fat (mm)	RBY (%)	IMF (%)	Trial Docility
+3.2	-6.0	+65	+5.9	+1.9	+2.8	+0.1	+2.3	-6
76%	38%	53%	49%	53%	57%	51%	50%	45%

STRUCTURAL ASSESSMENT							25-Jun-18	Temp.
Front	Back	Front	Back				20-Jun-18	
							39	
6	6	6	6	6	6	3		2

INDEX VALUE				Polled Gene	Maturity	Mus Score	EYES	
Supermarket	Grass Fed	Grain Fed	EU Index					Eye Pigment
\$127	\$128	\$170	\$145	PP <i>Homz</i>	<i>Mid</i>	C+		100/100
							4	

Sire: **WIRRUNA KEITH K169**

CAPETHORNE HOT SHOT 03 22
 MATARIKI HOLY-SMOKE
 MATARIKI GIRLIE 00323

MOUNT DIFFICULT FELLIS Y12 (AI)
 WIRRUNA DIDO F397
 SOUTH BUKALONG DIDO 65

STUDBROOK D'ARTAGNION V086 (AI) (IMP)
 OTAPAWA SPARK 3060 (IMP)
 OTAPAWA SPOT P30

Dam: **WIRRUNA VICTORIA J199**

SOUTH BUKALONG UNGAR 8
 SOUTH BUKALONG VICTORIA 236
 SOUTH BUKALONG VICTORIA 200



Semen Price \$50/straw

Black highlight: Ranks with top 5% of breed

Grey highlight: Ranks with top 20% of breed

M433**Wirruna Michelangelo M433 (ET)****WNAM433****(Wirruna Semen Sires)**

Birth Date: 30-Aug-16
 Society ID: WNAM433
 Horn/Scurs/Poll: Homozygous Poll (Poll Gene test)

- An X51 son out of one of my favourite Wirruna Donor Cows
- Carries rare trait combination of top 1% muscle & marbling
- Features B- muscle, good conformation & structural attributes
- This fellow has had EU qualified semen collected for OS export

*Easy-calve*

July 2018 GROUP BREEDPLAN EBV's

CALVING EASE				GROWTH & MATERNAL				
Calving Ease DIR (%)	Calving Ease DTRS (%)	Gestation Length (days)	Birth Weight	200-Day Growth	400-Day Weight	600-Day Weight	Mat Cow Weight	Genetic Milk
+9.7	+3.7	+0.9	+0.7	+24	+50	+61	+42	+11
47%	36%	64%	74%	70%	69%	67%	60%	55%

FERTILITY		CARCASE						
Scrotal Size (cm)	Days to Calving	Carc Weight	EMA (sq cm)	Rib Fat (mm)	Rump Fat (mm)	RBV (%)	IMF (%)	Trial Docility
+2.9	-4.4	+53	+8.7	+1.7	+1.9	+1.0	+2.0	-4
77%	36%	57%	52%	55%	58%	52%	53%	58%

STRUCTURAL ASSESSMENT							29-Sep-17	Temp.
							30-Oct-17	
6	6	5	5	5	5	4	36	2

INDEX VALUE				Polled Gene	Maturity	Mus Score	EYES	
Supermarket	Grass Fed	Grain Fed	EU Index					Eye Pigment
\$119	\$124	\$164	\$140	PP <i>Homz</i>	<i>Mid</i>	B-		<i>100/100</i>
							4	

FELTONS LEGEND 242 (IMP USA)
 MSU TCF REVOLUTION 4R
 MSU TCF RACHAEL ET 54N

Sire: KCF BENNETT REVOLUTION X51

EFBEEF SCHU-LAR PROFICIENT N093
 KCF MISS PROFICIENT U201
 KCF MISS 774 L82

MARKOWEN INTRUDER
 WIRRUNA CANDIDATE C118
 WIRRUNA FLORA Z267

Dam: WIRRUNA CORA E319

MOUNT DIFFICULT FELLIS Y12 (AI)
 WIRRUNA CORA B38
 WIRRUNA CORA U68

No Photo available: Jul 2018

Semen Price
\$50/straw

Black highlight: Ranks with top 5% of breed

Grey highlight: Ranks with top 20% of breed

L102 ✓

Wirruna Lennon L102 (AI)

WNAL102

(Wirruna Semen Sires)

Birth Date: 10-Aug-15
 Society ID: WNAL102
 Horn/Scurs/Poll: Homozygous Poll (UQ Gene test)

- ✓ Outstanding Anzac son with good birth to growth spread
- ✓ Combines carcass quality (top 5% IMF%) with good muscle (top 1% EMA)
- ✓ \$Index values rank in the top 5% of the breed
- ✓ Features good temperament, sound structure & Homo polled genetics

(NB. Semen rights owned by Kelly Family, Netherhall, UK)



July 2018 GROUP BREEDPLAN EBV's

CALVING EASE				GROWTH & MATERNAL				
Calving Ease DIR (%)	Calving Ease DTRS (%)	Gestation Length (days)	Birth Weight	200-Day Growth	400-Day Weight	600-Day Weight	Mat Cow Weight	Genetic Milk
+2.8	+1.8	-1.6	+4.2	+39	+72	+94	+77	+14
57%	48%	77%	77%	73%	72%	71%	66%	58%

FERTILITY		CARCASS						
Scrotal Size (cm)	Days to Calving	Carc Weight	EMA (sq cm)	Rib Fat (mm)	Rump Fat (mm)	RBY (%)	IMF (%)	Trial Docility
+3.4	-2.3	+70	+7.2	+1.2	+2.0	+0.9	+1.4	+21
78%	42%	62%	56%	59%	63%	58%	59%	61%

STRUCTURAL ASSESSMENT							8-Jan-18	Temp.
Front	Back	Front	Back				24-Jan-18	
6	6	5	6	4	5	3	41	1

\$INDEX VALUE				Polled Gene	Maturity	Mus Score	EYES	
Supermarket	Grass Fed	Grain Fed	EU Index	PP 98%	Mid	B-		Eye Pigment
\$126	\$124	\$153	\$138				3	100/100

Sire: ALLENDALE ANZAC E114

ALLENDALE PUNTER 3
 ALLENDALE YACKA
 ALLENDALE FLORRIE Z33

ALLENDALE NATIONAL W168
 ALLENDALE DAWN B22 (AI) (ET)
 ALLENDALE DAWN T60 (AI)

KOANUI ROCKET 0219
 WIRRUNA CALLAN C26
 WIRRUNA GOLDEN VANITY A78

Dam: WIRRUNA MADAM H55

MOUNT DIFFICULT FELLIS Y12 (AI)
 WIRRUNA MADAM E226
 WIRRUNA MADAM Z51



Semen Price \$50/straw

Black highlight: Ranks with top 5% of breed

Grey highlight: Ranks with top 20% of breed

L249**Wirruna Lazaro L249 (AI)****WNAL249****(Wirruna Semen Sires)**

Birth Date: 17-Aug-15
 Society ID: WNAL249
 Horn/Scurs/Poll: Homozygous Poll (UQ Gene test)

- A long-bodied Jedi son to boost kilos of beef produced
- Lots of growth & carcass weight in this Wirruna Sire (top 1% CWT)
- Large testicles & strong fertility traits - top 1% of breed for SS & DtC EBVs
- A genetic dehorner with top 1% \$Index for strong profit potential



July 2018 GROUP BREEDPLAN EBV's

CALVING EASE				GROWTH & MATERNAL				
Calving Ease DIR (%)	Calving Ease DTRS (%)	Gestation Length (days)	Birth Weight	200-Day Growth	400-Day Weight	600-Day Weight	Mat Cow Weight	Genetic Milk
-1.9	+0.4	-2.1	+4.4	+44	+77	+106	+104	+12
54%	43%	75%	79%	74%	71%	71%	64%	51%

FERTILITY		CARCASS						
Scrotal Size (cm)	Days to Calving	Carc Weight	EMA (sq cm)	Rib Fat (mm)	Rump Fat (mm)	RBY (%)	IMF (%)	Trial Docility
+3.8	-5.9	+77	+5.1	+1.4	+1.5	+0.9	+1.9	+12
77%	41%	60%	52%	56%	60%	54%	54%	62%

STRUCTURAL ASSESSMENT							8-Jan-18	Temp.
Front	Back	Front	Back	Side	Legs	Feet	24-Jan-18	Temp.
							42	
7	7	6	7	6	6	4		1

INDEX VALUE				Polled Gene	Maturity	Mus Score	EYES	
Supermarket	Grass Fed	Grain Fed	EU Index					Eye Pigment
\$138	\$135	\$172	\$156	PP 98%	Late	C+		100/100
							4	

DOONBIDDIE HUSTLER
 ARDO HUSTLER 4110 (IMP)
 ARDO AMETHYST 730

Sire: **TOBRUK JEDI**

MOUNT DIFFICULT FELLIS Y12 (AI)
 PINE HILL MARITANA A619
 PINE HILL MARITANA W575

ALLENDALE KING KONG 2
 ALLENDALE NATIONAL W168
 ALLENDALE CORA R22

Dam: **WIRRUNA VICTORIA D30**

MOUNT DIFFICULT UNGAR (S)
 SOUTH BUKALONG VICTORIA 196
 SOUTH BUKALONG VICTORIA 180



Black highlight: Ranks with top 5% of breed

Grey highlight: Ranks with top 20% of breed

L477 ✓

Wirruna Lindley L477 (ET)

WNAL477

(Wirruna Semen Sires)

Birth Date: 31-Aug-15
 Society ID: WNAL477
 Horn/Scurs/Poll: Homozygous Poll (UQ Gene test)

- ✓ Wirruna Sire chosen in 7th cohort of HAL Progeny Test
- ✓ I like his strong growth from a safe calving ease foundation
- ✓ Shows exceptional B- muscle containing top 1% marbling
- ✓ Progeny of good uddered Donor Dam included Wirruna Sire Jessy J146



Easy-calve

July 2018 GROUP BREEDPLAN EBV's

CALVING EASE				GROWTH & MATERNAL				
Calving Ease DIR (%)	Calving Ease DTRS (%)	Gestation Length (days)	Birth Weight	200-Day Growth	400-Day Weight	600-Day Weight	Mat Cow Weight	Genetic Milk
+5.4	+6.3	-2.9	+4.7	+38	+66	+95	+90	+21
63%	55%	68%	82%	76%	73%	73%	68%	60%

FERTILITY		CARCASE						
Scrotal Size (cm)	Days to Calving	Carc Weight	EMA (sq cm)	Rib Fat (mm)	Rump Fat (mm)	RBV (%)	IMF (%)	Trial Docility
+3.3	-6.3	+63	+3.5	+1.9	+2.7	-0.4	+1.8	-10
68%	48%	64%	55%	57%	59%	56%	58%	69%

STRUCTURAL ASSESSMENT							16-Jun-17	Temp.
							19-Jun-17	
6	6	5	5	5	5	4	41	2

INDEX VALUE				Polled Gene	Maturity	Mus Score	EYES	
Supermarket	Grass Fed	Grain Fed	EU Index	PP	<i>Mid</i>	B-		Eye Pigment
\$140	\$138	\$174	\$156	98%			4	100/100

Sire: **OTAPAWA SPARK 3060 (IMP)**
 ALLENDALE MUSKETEER (AI) (S)
 STUDBROOK D'ARTAGNION V086 (AI) (ET)
 BOWEN TRICEL P180
 MONYMUSK DISCOVERY L34 (IMP)
 OTAPAWA SPOT P30
 OTAPAWA SPOT L44
 SOUTH BUKALONG WALKER 6
 SOUTH BUKALONG WALLACE 2
 SOUTH BUKALONG VICTORIA 152
 Dam: **WIRRUNA MABEL F127**
 FELTONS JUMBO 112 (IMP)
 MOUNT DIFFICULT MABEL Z85
 MOUNT DIFFICULT MABEL T77



Semen Price \$50/straw

Black highlight: Ranks with top 5% of breed
 Grey highlight: Ranks with top 20% of breed

L545**Wirruna Ladies Man L545 (ET)****WNAL545****(Wirruna Semen Sires)**

Birth Date: 6-Sep-15
 Society ID: WNAL545
 Horn/Scurs/Poll: Homozygous Poll (UQ Gene test)

- A high \$Index Spark son with curve-bending growth
- Herd boosting carcase quality traits with top 1% marbling
- High Fertility-DtC EBV is among the top handful of 2015 born bulls
- Out of a favoured high calving ease Dam selected as a Donor Cow

*Easy-calve*

July 2018 GROUP BREEDPLAN EBV's

CALVING EASE				GROWTH & MATERNAL				
Calving Ease DIR (%)	Calving Ease DTRS (%)	Gestation Length (days)	Birth Weight	200-Day Growth	400-Day Weight	600-Day Weight	Mat Cow Weight	Genetic Milk
+2.9	+5.3	-3.2	+4.9	+36	+62	+97	+96	+16
71%	58%	68%	87%	82%	76%	76%	70%	61%

FERTILITY		CARCASE						
Scrotal Size (cm)	Days to Calving	Carc Weight	EMA (sq cm)	Rib Fat (mm)	Rump Fat (mm)	RBV (%)	IMF (%)	Trial Docility
+2.4	-7.6	+65	+3.8	+2.2	+3.3	-0.1	+1.8	-10
78%	51%	67%	60%	62%	65%	61%	62%	76%

STRUCTURAL ASSESSMENT							8-Jan-18	Temp.
Front	Back	Front	Back	Side	Legs	Feet	24-Jan-18	Temp.
							40	
6	7	6	7	6	6	3		1

\$INDEX VALUE				Polled Gene	Maturity	Mus Score	EYES	
Supermarket	Grass Fed	Grain Fed	EU Index					Eye Pigment
\$144	\$142	\$177	\$161	PP 98%	<i>Mid</i>	C+		100/100
							4	

Sire: **OTAPAWA SPARK 3060 (IMP)**

ALLEDALE MUSKETEER (AI) (S)
 STUDBROOK D'ARTAGNION V086 (AI) (ET)
 BOWEN TRICEL P180

MONYMUSK DISCOVERY L34 (IMP)
 OTAPAWA SPOT P30
 OTAPAWA SPOT L44

SOUTH BUKALONG WALKER 6
 SOUTH BUKALONG WALLACE 2
 SOUTH BUKALONG VICTORIA 152

Dam: **WIRRUNA NADIA F44**

MOUNT DIFFICULT FELLIS Y12 (AI)
 MOUNT DIFFICULT NADIA C85
 MOUNT DIFFICULT NADIA V15 (AI)



Semen Price \$50/straw

Black highlight: Ranks with top 5% of breed
 Grey highlight: Ranks with top 20% of breed

July 2018 Hereford GROUP BREEDPLAN - Percentile Bands for all 2016 born animals

Use this table as a guide to compare individual animals with the current genetic level of the breed

	Calv-Ease		Birth		Growth					Fert		Carcase					Extra		Indexes				
	Dir	Dtrs	GL	Bwt	200	400	600	Mwt	Milk	SS	DC	Cwt	EMA	Rib	P8	RBY	IMF	Doc	NFI	SM	GS	GN	EU
	%		days	kg					cm	days	kg	sq.cm	mm		%	kg/day		\$					
High 1%	+12.3	+8.2	-5.0	-0.9	+46	+75	+110	+107	+25	+3.7	-5.9	+73	+6.4	+2.1	+3.0	+2.4	+1.8	+18	-0.30	+134	+132	+166	+149
High 5%	+9.5	+6.2	-3.0	+0.7	+42	+69	+99	+94	+22	+3.1	-4.9	+66	+5.3	+1.5	+2.2	+1.9	+1.2	+15	-0.19	+120	+118	+143	+134
High 10%	+7.7	+5.1	-2.2	+1.6	+40	+65	+93	+88	+21	+2.8	-4.4	+62	+4.7	+1.3	+1.8	+1.6	+1.0	+13	-0.14	+112	+109	+130	+124
High 15%	+6.4	+4.3	-1.7	+2.2	+38	+63	+90	+84	+20	+2.6	-4.0	+59	+4.4	+1.1	+1.5	+1.4	+0.9	+11	-0.12	+107	+103	+122	+118
High 20%	+5.4	+3.7	-1.4	+2.6	+37	+61	+87	+81	+19	+2.4	-3.7	+57	+4.1	+1.0	+1.3	+1.3	+0.7	+9	-0.10	+102	+99	+116	+113
High 25%	+4.5	+3.2	-1.1	+3.0	+36	+59	+85	+78	+18	+2.3	-3.4	+55	+3.8	+0.9	+1.1	+1.2	+0.6	+8	-0.08	+99	+95	+110	+109
High 30%	+3.6	+2.7	-0.9	+3.3	+35	+58	+82	+75	+18	+2.2	-3.2	+54	+3.7	+0.8	+1.0	+1.1	+0.6	+7	-0.06	+95	+91	+105	+106
High 35%	+2.9	+2.2	-0.7	+3.6	+35	+57	+81	+73	+17	+2.1	-3.0	+52	+3.5	+0.7	+0.8	+1.0	+0.5	+6	-0.04	+92	+88	+100	+102
High 40%	+2.1	+1.7	-0.5	+3.9	+34	+55	+79	+71	+16	+2.0	-2.8	+51	+3.3	+0.6	+0.7	+0.9	+0.4	+5	-0.03	+89	+85	+96	+99
High 45%	+1.4	+1.3	-0.3	+4.1	+33	+54	+77	+69	+16	+1.9	-2.6	+50	+3.1	+0.5	+0.6	+0.8	+0.4	+4	-0.01	+86	+82	+92	+96
50%	+0.7	+0.9	-0.2	+4.3	+32	+53	+75	+67	+15	+1.8	-2.4	+48	+3.0	+0.4	+0.5	+0.8	+0.3	+3	+0.00	+83	+79	+88	+92
Low 45%	+0.0	+0.5	+0.0	+4.6	+32	+52	+73	+65	+15	+1.7	-2.3	+47	+2.9	+0.4	+0.3	+0.7	+0.2	+2	+0.01	+80	+76	+84	+89
Low 40%	-0.6	+0.0	+0.1	+4.8	+31	+50	+71	+63	+14	+1.6	-2.1	+46	+2.7	+0.3	+0.2	+0.6	+0.2	+1	+0.02	+78	+73	+80	+86
Low 35%	-1.2	-0.4	+0.3	+5.0	+30	+49	+70	+60	+14	+1.5	-1.9	+44	+2.6	+0.2	+0.1	+0.5	+0.1	+0	+0.03	+75	+70	+76	+83
Low 30%	-1.9	-0.8	+0.5	+5.2	+29	+48	+68	+58	+13	+1.5	-1.7	+43	+2.4	+0.1	+0.0	+0.4	+0.1	-1	+0.05	+72	+67	+72	+80
Low 25%	-2.7	-1.2	+0.7	+5.5	+28	+46	+65	+56	+13	+1.3	-1.5	+41	+2.3	+0.0	-0.2	+0.3	+0.0	-2	+0.06	+68	+63	+68	+76
Low 20%	-3.5	-1.7	+0.9	+5.7	+27	+45	+63	+53	+12	+1.2	-1.2	+39	+2.1	-0.1	-0.3	+0.3	-0.1	-3	+0.07	+65	+60	+63	+73
Low 15%	-4.5	-2.3	+1.2	+6.0	+26	+43	+60	+49	+11	+1.1	-1.0	+37	+1.9	-0.2	-0.5	+0.1	-0.2	-5	+0.08	+61	+56	+59	+69
Low 10%	-5.9	-3.1	+1.5	+6.4	+25	+40	+56	+45	+10	+0.9	-0.7	+35	+1.7	-0.4	-0.8	+0.0	-0.3	-7	+0.10	+56	+52	+53	+63
Low 5%	-8.1	-4.5	+2.1	+7.0	+22	+36	+50	+38	+9	+0.7	-0.3	+31	+1.4	-0.6	-1.1	-0.2	-0.4	-11	+0.13	+49	+45	+45	+56
Low 1%	-12.9	-7.3	+3.8	+8.1	+16	+27	+36	+18	+6	+0.1	+0.4	+22	+0.8	-1.1	-1.8	-0.7	-0.7	-19	+0.20	+36	+33	+32	+43