



WIRRUNA
poll herefords

Contact: Ian Locke
Wirruna Poll Hereford Stud
"Spring Valley" Holbrook
NSW 2644

Phone: (02) 60362877
Mobile: (0408) 637 267
Email: locke.ian@bigpond.com
Website: www.wirruna.com

WIRRUNA POLL HEREFORDS

SEMEN SIRES

Young Guns

2017



Wirruna Poll Hereford Stud
 IAN & DIANA LOCKE
 "Spring Valley"
 Holbrook NSW 2644

ph. 02 6036 2877
 fx. 02 6036 3060
 mb. 0408 637 267
 email locke.ian@bigpond.com
 Website www.wirruna.com

Wirruna Semen Sires

Young Guns

Tag No	Animal Tag	Sire	Jun 2017 GROUP BREEDPLAN EBV's																				SINDEK VALUE			
			CALVING EASE				GROWTH & MATERNAL					FERTILITY		CARCASE DATA EBV's												
			CED	CEM	GL	BW	200	400	600	MCW	Milk	SS	DC	CW	EMA	Rib Fat	P8 Fat	RBY	IMF	Trial Docility	SM	Grass Fed	Grain Fed	EU Index		
L95	Wirruna Leap Forward L95 (ET)	KCF Bennett Revolution	+3.6	+3.0	+0.5	+3.5	+39	+66	+87	+57	+19	+1.7	-3.0	+67	+7.2	+1.7	+1.9	+0.8	+1.7	-3	\$126	\$124	\$160	\$139		
L102	Wirruna Lennon L102	AEDE114	+1.4	+2.6	-2.0	+4.6	+40	+71	+92	+75	+13	+3.7	-3.6	+71	+6.4	+1.3	+2.2	+0.9	+1.4	+20	\$126	\$123	\$153	\$140		
L285	Wirruna Ledger L285 (AI)	Allendale Anzac E114	-0.3	+1.5	-0.4	+5.7	+43	+72	+99	+81	+19	+4.4	-4.6	+73	+5.5	+1.5	+2.1	+0.2	+1.9	+7	\$131	\$127	\$166	\$146		
L477	Wirruna Lindley L477 (ET)	Otapawa Spark	+4.0	+6.0	-3.4	+3.8	+39	+65	+90	+81	+19	+2.7	-5.8	+64	+4.1	+1.6	+2.3	-0.3	+1.9	+4	\$133	\$130	\$167	\$148		
L545	Wirruna Ladies Man L545 (ET)	Otapawa Spark	+3.4	+5.4	-3.9	+3.8	+37	+63	+90	+89	+17	+2.2	-6.3	+65	+5.1	+1.7	+2.5	+0.2	+1.6	-8	\$133	\$130	\$161	\$149		
K66	Wirruna Kenny K66 (AI)	Matariki Holy-Smoke	-5.6	+2.8	-3.5	+3.5	+42	+69	+92	+63	+16	+3.6	-4.5	+71	+5.2	+1.3	+1.8	+1.0	+1.3	+16	\$119	\$116	\$146	\$132		
K74	Wirruna Katnook K74 (AI)	Wirruna Fletcher F214	+2.1	+1.4	-4.8	+5.4	+45	+75	+100	+84	+16	+3.9	-5.5	+75	+6.9	+0.4	-0.3	+2.1	+1.6	+8	\$139	\$135	\$175	\$162		
K93	Wirruna Keech K93 (AI)	Elite X122 H2	+1.2	+5.6	-3.8	+3.1	+34	+58	+78	+46	+22	+2.4	-4.2	+57	+5.8	+0.2	+0.2	+2.2	+0.3	+10	\$114	\$111	\$131	\$130		
K128	Wirruna Kenton K128 (AI)	Wirruna Gardner G465	+2.4	+2.8	-4.9	+5.5	+38	+64	+91	+74	+15	+2.3	-3.7	+58	+5.0	+1.1	+1.5	+0.9	+1.5	+10	\$122	\$119	\$152	\$137		
K326	Wirruna Kalimna K326	Wirruna Hartwig H297	+0.4	+4.7	-3.6	+1.7	+34	+69	+95	+87	+16	+3.3	-4.0	+74	+5.7	+1.6	+2.3	+0.3	+2.3	-5	\$134	\$132	\$172	\$148		
<i>Breed Ave. '15 drop</i>			+0.1	+1.3	-0.2	+4.3	+30	+49	+70	+64	+14	+1.7	-2.4	+45	+2.9	+0.4	+0.5	+0.8	+0.3	+3	\$78	\$73	\$83	\$88		

Improve your beef herd profitability with Wirruna Poll Hereford genetics

- Disciplined Approach to Breeding**
All cows must raise live unassisted calf at 2 yrs and rejoin annually in strict 6 week joining period to remain in herd
- High level Performance Program**
*All cattle assessed in large management groups and run at high stocking rates to screen commercially acceptable genetics
 Recognised as one of the leading Breedplan performance recorded herds in Australia*
- Breed leading genetics**
All 2015 Wirruna born calves average in top 5% of the breed for all \$Indices

L95



Wirruna Leap Forward L95 (ET)

WNAL95

(Wirruna Semen Sires)

Birth Date: 10-Aug-15
 Society ID: WNAL95
 Horn/Scurs/Poll: Poll

- New Sire by No.1 US multi-trait proven bull featuring over 1,000 progeny
- Out of a top Wirruna Donor cow from a strong carcass family
- Use to capture his exceptional birth to growth spread and maternal attributes
- Use to boost carcass - Eye Muscle Area & Marbling in breed's top 1%



Easy-calve

Jun 2017 GROUP BREEDPLAN EBV's

CALVING EASE				GROWTH & MATERNAL				
Calving Ease DIR (%)	Calving Ease DTRS (%)	Gestation Length (days)	Birth Weight	200-Day Growth	400-Day Weight	600-Day Weight	Mat Cow Weight	Genetic Milk
+3.6	+3.0	+0.5	+3.5	+39	+66	+87	+57	+19
40%	31%	55%	72%	67%	67%	66%	58%	52%

FERTILITY		CARCASS						
Scrotal Size (cm)	Days to Calving	Carc Weight	EMA (sq cm)	Rib Fat (mm)	Rump Fat (mm)	RYB (%)	IMF (%)	Trial Docility
+1.7	-3.0	+67	+7.2	+1.7	+1.9	+0.8	+1.7	-3
76%	35%	55%	49%	53%	56%	49%	51%	55%

STRUCTURAL ASSESSMENT							19-Jun-17	Temp.
							19-Jun-17	
6	6	5	6	5	5	4	38	2

INDEX VALUE				Polled Gene	Maturity	Mus Score	EYES	
Supermarket	Grass Fed	Grain Fed	EU Index	??	Mid	C+		Eye Pigment
\$126	\$124	\$160	\$139	-			4	100/100

FELTONS LEGEND 242 (IMP USA)
 MSU TCF REVOLUTION 4R
 MSU TCF RACHAEL ET 54N

Sire: KCF BENNETT REVOLUTION X51

EFBEEF SCHU-LAR PROFICIENT N093
 KCF MISS PROFICIENT U201
 KCF MISS 774 L82

WIRRUNA VICKERY (S)
 WIRRUNA COMMANDER C68
 WIRRUNA GOLDEN VANITY Z71

Dam: WIRRUNA MIDGE F322

MOUNT DIFFICULT FELLIS Y12 (AI)
 WIRRUNA MIDGE A51
 WIRRUNA MIDGE Q126



Photo taken: Nov 2016

Semen Price \$50/straw

Black highlight: Ranks with top 5% of breed

Grey highlight: Ranks with top 20% of breed

L102**Wirruna Lennon L102****WNAL102****(Wirruna Semen Sires)**

Birth Date: 10-Aug-15
 Society ID: WNAL102
 Horn/Scurs/Poll: Homozygous Poll (UQ Gene test)

- Outstanding Anzac son with good birth to growth spread
- Combines carcass quality (top 5% IMF%) with good muscle (top 1% EMA)
- \$Index values rank in the top 1% of the breed
- Features good temperament, sound structure & Homo polled genetics



Jun 2017 GROUP BREEDPLAN EBV's

CALVING EASE				GROWTH & MATERNAL				
Calving Ease DIR (%)	Calving Ease DTRS (%)	Gestation Length (days)	Birth Weight	200-Day Growth	400-Day Weight	600-Day Weight	Mat Cow Weight	Genetic Milk
+1.4	+2.6	-2.0	+4.6	+40	+71	+92	+75	+13
49%	42%	76%	74%	70%	70%	69%	64%	55%

FERTILITY		CARCASS						
Scrotal Size (cm)	Days to Calving	Carc Weight	EMA (sq cm)	Rib Fat (mm)	Rump Fat (mm)	RBV (%)	IMF (%)	Trial Docility
+3.7	-3.6	+71	+6.4	+1.3	+2.2	+0.9	+1.4	+20
77%	41%	60%	55%	58%	62%	56%	58%	55%

STRUCTURAL ASSESSMENT							19-Jun-17	Temp.
							19-Jun-17	
6	5	5	5	5	5	4	38	2

\$INDEX VALUE				Polled Gene	Maturity	Mus Score	EYES	
Supermarket	Grass Fed	Grain Fed	EU Index	PP	<i>Mid</i>	C+		Eye Pigment
\$126	\$123	\$153	\$140	98%			4	100/100

Sire: **ALLENDALE ANZAC E114**

ALLENDALE PUNTER 3
 ALLENDALE YACKA
 ALLENDALE FLORRIE Z33

ALLENDALE NATIONAL W168
 ALLENDALE DAWN B22 (AI) (ET)
 ALLENDALE DAWN T60 (AI)

KOANUI ROCKET 0219
 WIRRUNA CALLAN C26
 WIRRUNA GOLDEN VANITY A78

Dam: **WIRRUNA MADAM H55**

MOUNT DIFFICULT FELLIS Y12 (AI)
 WIRRUNA MADAM E226
 WIRRUNA MADAM Z51

Photo Pending

Semen Price
\$50/straw

Black highlight: Ranks with top 5% of breed

Grey highlight: Ranks with top 20% of breed

L285**Wirruna Ledger L285 (AI)****WNAL285****(Wirruna Semen Sires)**

Birth Date: 19-Aug-15
 Society ID: WNAL285
 Horn/Scurs/Poll: Homozygous Poll (UQ Gene test)

- Emerged as the standout bull of the Wirruna 2015 drop
- You can see the carcass in this fellow. Scanning revealed high IMF & EMA
- \$Indices in the breed's top 1% reflects exceptional set of traits
- Features a fantastic back-end & exceptional weight/day of age performance



Jun 2017 GROUP BREEDPLAN EBV's

CALVING EASE				GROWTH & MATERNAL				
Calving Ease DIR (%)	Calving Ease DTRS (%)	Gestation Length (days)	Birth Weight	200-Day Growth	400-Day Weight	600-Day Weight	Mat Cow Weight	Genetic Milk
-0.3	+1.5	-0.4	+5.7	+43	+72	+99	+81	+19
46%	38%	76%	73%	69%	69%	68%	63%	54%

FERTILITY		CARCASS						
Scrotal Size (cm)	Days to Calving	Carc Weight	EMA (sq cm)	Rib Fat (mm)	Rump Fat (mm)	RBY (%)	IMF (%)	Trial Docility
+4.4	-4.6	+73	+5.5	+1.5	+2.1	+0.2	+1.9	+7
77%	36%	59%	53%	57%	61%	55%	56%	54%

STRUCTURAL ASSESSMENT							19-Jun-17	Temp.
							19-Jun-17	
6	6	5	5	5	5	4	42	2

INDEX VALUE				Polled Gene	Maturity	Mus Score	EYES	
Supermarket	Grass Fed	Grain Fed	EU Index	PP	<i>Mid</i>	C+		Eye Pigment
\$131	\$127	\$166	\$146	98%			4	100/100

Sire: **ALLENDALE ANZAC E114**

ALLENDALE PUNTER 3
 ALLENDALE YACKA
 ALLENDALE FLORRIE Z33

ALLENDALE NATIONAL W168
 ALLENDALE DAWN B22 (AI) (ET)
 ALLENDALE DAWN T60 (AI)

GH STOUT LINE ET 87P
 GH ADAMS TARGET 5S (IMP)
 GH MARY MAC 209P (HP)

Dam: **WIRRUNA DOREEN G115**

MOUNT DIFFICULT UNGAR (S)
 WIRRUNA DOREEN A37
 WIRRUNA DOREEN Y31



Black highlight: Ranks with top 5% of breed
 Grey highlight: Ranks with top 20% of breed

L477**Wirruna Lindley L477 (ET)****WNAL477****(Wirruna Semen Sires)**

Birth Date: 31-Aug-15
 Society ID: WNAL477
 Horn/Scurs/Poll: Homozygous Poll (UQ Gene test)

- New Sire chosen in 7th cohort of HAL Progent Test
- I like his strong growth from a safe calving ease foundation
- Shows exceptional B- muscle containing top 1% marbling
- Progeny of good uddered Donor Dam included Wirruna Sire Jessy J146

*Easy-calve*

Jun 2017 GROUP BREEDPLAN EBV's

CALVING EASE				GROWTH & MATERNAL				
Calving Ease DIR (%)	Calving Ease DTRS (%)	Gestation Length (days)	Birth Weight	200-Day Growth	400-Day Weight	600-Day Weight	Mat Cow Weight	Genetic Milk
+4.0	+6.0	-3.4	+3.8	+39	+65	+90	+81	+19
55%	51%	63%	74%	68%	66%	67%	64%	60%

FERTILITY		CARCASE						
Scrotal Size (cm)	Days to Calving	Carc Weight	EMA (sq cm)	Rib Fat (mm)	Rump Fat (mm)	RBV (%)	IMF (%)	Trial Docility
+2.7	-5.8	+64	+4.1	+1.6	+2.3	-0.3	+1.9	+4
59%	46%	59%	54%	57%	59%	55%	57%	59%

STRUCTURAL ASSESSMENT							19-Jun-17	Temp.
							19-Jun-17	
6	6	5	5	5	5	4	41	2

INDEX VALUE				Polled Gene	Maturity	Mus Score	EYES	
Supermarket	Grass Fed	Grain Fed	EU Index	PP	Mid	B-		Eye Pigment
\$133	\$130	\$167	\$148	98%			4	100/100

ALLENDALE MUSKETEER (AI) (S)
 STUDBROOK D'ARTAGNION V086 (AI) (ET)
 BOWEN TRICEL P180

Sire: **OTAPAWA SPARK 3060 (IMP)**

MONYMUSK DISCOVERY L34 (IMP)
 OTAPAWA SPOT P30
 OTAPAWA SPOT L44

SOUTH BUKALONG WALKER 6
 SOUTH BUKALONG WALLACE 2
 SOUTH BUKALONG VICTORIA 152

Dam: **WIRRUNA MABEL F127**

FELTONS JUMBO 112 (IMP)
 MOUNT DIFFICULT MABEL Z85
 MOUNT DIFFICULT MABEL T77



Photo taken: Nov 2016

Semen Price \$50/straw

Black highlight: Ranks with top 5% of breed

Grey highlight: Ranks with top 20% of breed

L545**Wirruna Ladies Man L545(ET)****WNAL545****(Wirruna Semen Sires)**

Birth Date: 6-Sep-15
 Society ID: WNAL545
 Horn/Scurs/Poll: Homozygous Poll (UQ Gene test)

- A high \$Index Spark son with curve-bending growth
- Herd boosting carcass traits with top 5% muscle & marbling
- High Fertility-DtC EBV is among the top handful of 2015 born bulls
- Out of a favoured high calving ease Dam selected as a Donor Cow

*Easy-calve*

Jun 2017 GROUP BREEDPLAN EBV's

CALVING EASE				GROWTH & MATERNAL				
Calving Ease DIR (%)	Calving Ease DTRS (%)	Gestation Length (days)	Birth Weight	200-Day Growth	400-Day Weight	600-Day Weight	Mat Cow Weight	Genetic Milk
+3.4	+5.4	-3.9	+3.8	+37	+63	+90	+89	+17
56%	52%	63%	74%	70%	70%	69%	66%	60%

FERTILITY		CARCASS						
Scrotal Size (cm)	Days to Calving	Carc Weight	EMA (sq cm)	Rib Fat (mm)	Rump Fat (mm)	RBV (%)	IMF (%)	Trial Docility
+2.2	-6.3	+65	+5.1	+1.7	+2.5	+0.2	+1.6	-8
77%	49%	63%	59%	61%	64%	60%	60%	60%

STRUCTURAL ASSESSMENT							19-Jun-17	Temp.
							19-Jun-17	
6	6	6	6	5	5	4	39	2

\$INDEX VALUE				Polled Gene	Maturity	Mus Score	EYES	
Supermarket	Grass Fed	Grain Fed	EU Index					Eye Pigment
\$133	\$130	\$161	\$149	PP 98%	<i>Mid</i>	C+		100/100
							4	

ALLENDALE MUSKETEER (AI) (S)
 STUDBROOK D'ARTAGNION V086 (AI) (ET)
 BOWEN TRICEL P180

Sire: **OTAPAWA SPARK 3060 (IMP)**

MONYMUSK DISCOVERY L34 (IMP)
 OTAPAWA SPOT P30
 OTAPAWA SPOT L44

SOUTH BUKALONG WALKER 6
 SOUTH BUKALONG WALLACE 2
 SOUTH BUKALONG VICTORIA 152

Dam: **WIRRUNA NADIA F44**

MOUNT DIFFICULT FELLIS Y12 (AI)
 MOUNT DIFFICULT NADIA C85
 MOUNT DIFFICULT NADIA V15 (AI)

Photo pending

Semen Price
\$50/straw

Black highlight: Ranks with top 5% of breed

Grey highlight: Ranks with top 20% of breed

K66**Wirruna Kenny K66 (AI)****WNAK66****(Wirruna Semen Sires)**

Birth Date: 10-Aug-14
 Society ID: WNAK66
 Horn/Scurs/Poll: Homozygous Poll (UQ Gene test)

- The standout Holy-Smoke son with curve-bending growth & high fertility
- An excellent EBV profile places him in the top 5% for all indexes
- Offers superior carcass attributes - top 5% ranking for EMA & marbling
- Dam has been selected as ET Donor Cow for good maternal performance

YARRAM HOT SHOT P028 (AI) (H)
 CAPETHORNE HOT SHOT 03 22
 CAPETHORNE AMETHYST U2 1

Sire: MATARIKI HOLY-SMOKE

KOANUI BULL'S-EYE R60
 MATARIKI GIRLIE 00323
 MATARIKI GIRLIE 3

ARDO HUSTLER 4110 (IMP)
 ELITE 4110 E212
 SOUTH BUKALONG WINIFRED 54

Dam: WIRRUNA DOREEN H5

WIRRUNA DEBARRY D145
 WIRRUNA DOREEN F229
 WIRRUNA DOREEN C9



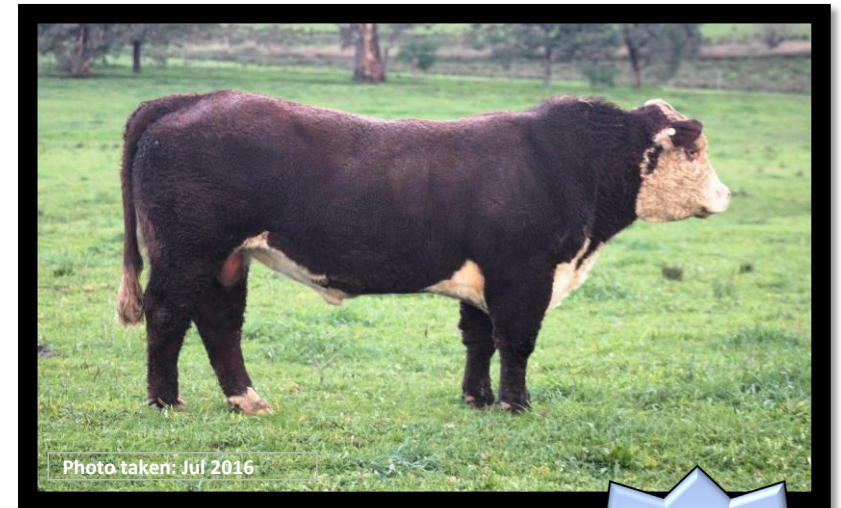
Jun 2017 GROUP BREEDPLAN EBV's

CALVING EASE				GROWTH & MATERNAL				
Calving Ease DIR (%)	Calving Ease DTRS (%)	Gestation Length (days)	Birth Weight	200-Day Growth	400-Day Weight	600-Day Weight	Mat Cow Weight	Genetic Milk
-5.6	+2.8	-3.5	+3.5	+42	+69	+92	+63	+16
64%	53%	77%	85%	79%	75%	75%	68%	57%

FERTILITY		CARCASS						
Scrotal Size (cm)	Days to Calving	Carc Weight	EMA (sq cm)	Rib Fat (mm)	Rump Fat (mm)	RBV (%)	IMF (%)	Trial Docility
+3.6	-4.5	+71	+5.2	+1.3	+1.8	+1.0	+1.3	+16
77%	41%	64%	56%	59%	63%	57%	58%	69%

STRUCTURAL ASSESSMENT							27-Oct-16	Temp.
							20-Dec-16	
6	7	6	7	5	5	4	39	1

INDEX VALUE				Polled Gene	Maturity	Mus Score	EYES	
Supermarket	Grass Fed	Grain Fed	EU Index	PP	<i>Mid</i>	B-		Eye Pigment
\$119	\$116	\$146	\$132	98%			4	100/100



Semen Price \$50/straw

Black highlight: Ranks with top 5% of breed
 Grey highlight: Ranks with top 20% of breed

K74**Wirruna Katnook K74 (AI)****WNAK74****(Wirruna Semen Sires)**

Birth Date: 10-Aug-14
 Society ID: WNAK74
 Horn/Scurs/Poll: Poll

- Exceptional sire for the breed - top of the drop Fletcher son
- Selected as a HAL BIN progeny test sire - utilize to build linkage
- Outstanding balance of CE, growth, carcase and fertility traits + phenotype
- High performing Dam, chalking up two Wirruna sires in first two calves

NOOKEN VALERIAN 2
 QUAMBY PLAINS STOCKMASTER Y118
 QUAMBY PLAINS MAGPIE W9

Sire: WIRRUNA FLETCHER F214

MOUNT DIFFICULT UNGAR (S)
 WIRRUNA LAST DAY B16 (H)
 WIRRUNA LAST DAY Z152

MOUNT DIFFICULT FELLIS Y12 (AI)
 WIRRUNA DAFFY D1
 MOUNT DIFFICULT LAST DAY A205

Dam: WIRRUNA VICTORIA G7

ALLENDALE NATIONAL W168
 WIRRUNA VICTORIA E112
 SOUTH BUKALONG VICTORIA 202



Jun 2017 GROUP BREEDPLAN EBV's

CALVING EASE				GROWTH & MATERNAL				
Calving Ease DIR (%)	Calving Ease DTRS (%)	Gestation Length (days)	Birth Weight	200-Day Growth	400-Day Weight	600-Day Weight	Mat Cow Weight	Genetic Milk
+2.1	+1.4	-4.8	+5.4	+45	+75	+100	+84	+16
53%	44%	76%	81%	76%	73%	72%	67%	55%

FERTILITY		CARCASE						
Scrotal Size (cm)	Days to Calving	Carc Weight	EMA (sq cm)	Rib Fat (mm)	Rump Fat (mm)	RYB (%)	IMF (%)	Trial Docility
+3.9	-5.5	+75	+6.9	+0.4	-0.3	+2.1	+1.6	+8
78%	43%	63%	57%	60%	63%	56%	59%	66%

STRUCTURAL ASSESSMENT							27-Oct-16	Temp.
Front	Back	Front	Back				20-Dec-16	
6	6	6	5	5	5	4	41	1

INDEX VALUE				Polled Gene	Maturity	Mus Score	EYES	
Supermarket	Grass Fed	Grain Fed	EU Index					Eye Pigment
\$139	\$135	\$175	\$162	Ph 98%	Mid	C+		100/100
							5	



Semen Price
\$60/straw

Black highlight: Ranks with top 5% of breed

Grey highlight: Ranks with top 20% of breed

K93**Wirruna Keech K93 (AI)****WNAK93****(Wirruna Semen Sires)**

Birth Date: 11-Aug-14
 Society ID: WNAK93
 Horn/Scurs/Poll: Homozygous Poll (UQ Gene test)

- Attractive son of Elite H2 that is a genetic dehorner - Homozygous polled
- Carries rare trait combination of high growth, carcass weight & calving ease
- Carries strong maternal traits and out of a high performing Dam
- Carries carcass yield (top 5% RBY%) and muscle (top 5% EMA)

*Easy-calve*

Jun 2017 GROUP BREEDPLAN EBV's

CALVING EASE				GROWTH & MATERNAL				
Calving Ease DIR (%)	Calving Ease DTRS (%)	Gestation Length (days)	Birth Weight	200-Day Growth	400-Day Weight	600-Day Weight	Mat Cow Weight	Genetic Milk
+1.2	+5.6	-3.8	+3.1	+34	+58	+78	+46	+22
55%	42%	75%	87%	81%	75%	74%	66%	46%

FERTILITY		CARCASS						
Scrotal Size (cm)	Days to Calving	Carc Weight	EMA (sq cm)	Rib Fat (mm)	Rump Fat (mm)	RBY (%)	IMF (%)	Trial Docility
+2.4	-4.2	+57	+5.8	+0.2	+0.2	+2.2	+0.3	+10
76%	37%	61%	49%	54%	58%	52%	52%	73%

STRUCTURAL ASSESSMENT							27-Oct-16	Temp.
Front	Back	Front	Back				20-Dec-16	
6	6	5	6	5	5	3	38	1

INDEX VALUE				Polled Gene	Maturity	Mus Score	EYES	
Supermarket	Grass Fed	Grain Fed	EU Index					Eye Pigment
\$114	\$111	\$131	\$130	PP 98%	<i>Mid</i>	B-		100/100
							4	

YARRAM LOTTERY U047 (H)
 YARRAM LOTTERY X122 (H)
 YARRAM ANGELA P099 (H)

Sire: **ELITE X122 H2**

SOUTH BUKALONG WALLACE 2
 ELITE LASSIE Y781 F15
 ELITE LASSIE 0219 D76

SOUTH BUKALONG WALLACE 2
 WIRRUNA FORT F382
 MOUNT DIFFICULT LORNA B123

Dam: **WIRRUNA DOREEN H287**

WIRRUNA DARKIE D66
 WIRRUNA DOREEN F373
 WIRRUNA DOREEN D371



Semen Price \$50/straw

Black highlight: Ranks with top 5% of breed

Grey highlight: Ranks with top 20% of breed

K128**Wirruna Kenton K128 (AI)****WNAK128****(Wirruna Semen Sires)**

Birth Date: 12-Aug-14
 Society ID: WNAK128
 Horn/Scurs/Poll: Homozygous Poll (UQ Gene test)

- High weight gain sire with top 10% growth traits
- Puts together B- muscle & marbling in top 5% of breed
- Short gestation length EBV, for early born calves, promotes easier calving
- Out of a high milking Dunoon Dam



Jun 2017 GROUP BREEDPLAN EBV's

CALVING EASE				GROWTH & MATERNAL				
Calving Ease DIR (%)	Calving Ease DTRS (%)	Gestation Length (days)	Birth Weight	200-Day Growth	400-Day Weight	600-Day Weight	Mat Cow Weight	Genetic Milk
+2.4	+2.8	-4.9	+5.5	+38	+64	+91	+74	+15
51%	41%	74%	85%	78%	69%	70%	61%	46%

FERTILITY		CARCASE						
Scrotal Size (cm)	Days to Calving	Carc Weight	EMA (sq cm)	Rib Fat (mm)	Rump Fat (mm)	RBV (%)	IMF (%)	Trial Docility
+2.3	-3.7	+58	+5.0	+1.1	+1.5	+0.9	+1.5	+10
50%	38%	55%	40%	44%	46%	42%	43%	71%

STRUCTURAL ASSESSMENT							23-Jun-16	Temp.
							23-Jun-16	
5	7	5	5	4	5	5	41	2

INDEX VALUE				Polled Gene	Maturity	Mus Score	EYES	
Supermarket	Grass Fed	Grain Fed	EU Index					Eye Pigment
\$122	\$119	\$152	\$137	PP 98%	Mid	B-		100/100
							3	

Sire: **WIRRUNA GARDNER G465**

ALLEDALE NATIONAL W168
 WIRRUNA EVAN E209
 WIRRUNA OYSTER GIRL Z14

MOUNT DIFFICULT FELLIS Y12 (AI)
 WIRRUNA MIDGE A51
 WIRRUNA MIDGE Q126

SOUTH BUKALONG WALKER 6
 SOUTH BUKALONG WALLACE 2
 SOUTH BUKALONG VICTORIA 152

Dam: **DUNOON PAGEANT H033**

BOWAN VINCENT V1
 DUNOON PAGEANT C029
 DUNOON PAGEANT Z028



Black highlight: Ranks with top 5% of breed

Grey highlight: Ranks with top 20% of breed

K326**Wirruna Kalimna K326****WNAK326****(Wirruna Semen Sires)**

Birth Date: 27-Aug-14
 Society ID: WNAK326
 Horn/Scurs/Poll: Homozygous Poll (UQ Gene test)

- A breed leading 2014 born bull for Grainfed \$Index - top 1% \$Indices
- HAL Progeny Test Sire selected for exceptional balance of EBVs
- Consider his curve-bending growth, marbling & muscling attributes
- Very sound and achieved excellent weight/day of age performance

*Easy-calve*

Jun 2017 GROUP BREEDPLAN EBV's

CALVING EASE				GROWTH & MATERNAL				
Calving Ease DIR (%)	Calving Ease DTRS (%)	Gestation Length (days)	Birth Weight	200-Day Growth	400-Day Weight	600-Day Weight	Mat Cow Weight	Genetic Milk
+0.4	+4.7	-3.6	+1.7	+34	+69	+95	+87	+16
56%	43%	57%	83%	78%	73%	72%	63%	45%

FERTILITY		CARCASE						
Scrotal Size (cm)	Days to Calving	Carc Weight	EMA (sq cm)	Rib Fat (mm)	Rump Fat (mm)	RBV (%)	IMF (%)	Trial Docility
+3.3	-4.0	+74	+5.7	+1.6	+2.3	+0.3	+2.3	-5
77%	38%	60%	51%	54%	59%	52%	53%	67%

STRUCTURAL ASSESSMENT							27-Oct-16	Temp.
							20-Dec-16	
6	6	6	6	5	5	4	38	1

INDEX VALUE				Polled Gene	Maturity	Mus Score	EYES	
Supermarket	Grass Fed	Grain Fed	EU Index					Eye Pigment
\$134	\$132	\$172	\$148	PP 98%	<i>Mid</i>	C+		100/100
							4	

ALLENDALE NATIONAL W168
 WIRRUNA EXPLORER E188
 SOUTH BUKALONG VICTORIA 202

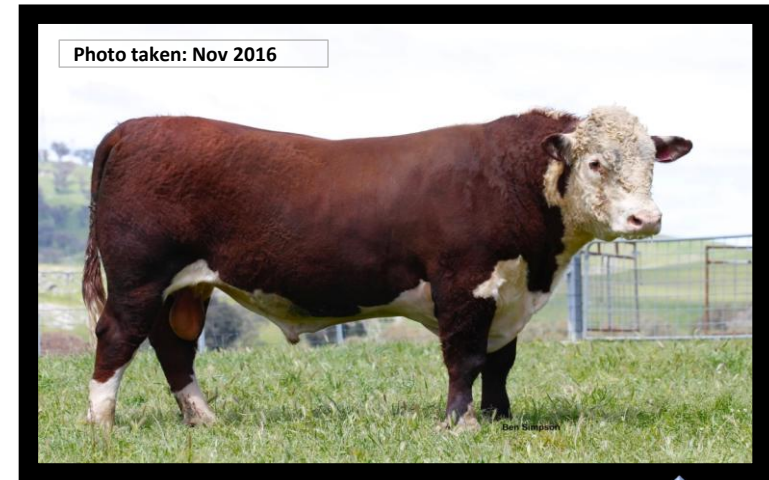
Sire: **WIRRUNA HARTWIG H297**

MOUNT DIFFICULT FELLIS Y12 (AI)
 WIRRUNA MIDGE A51
 WIRRUNA MIDGE Q126

DOONBIDDIE HUSTLER
 ARDO HUSTLER 4110 (IMP)
 ARDO AMETHYST 730

Dam: **WIRRUNA CORA H303**

KOANUI ROCKET 0219
 WIRRUNA CORA D9
 WIRRUNA CORA B38



Semen Price \$60/straw

Black highlight: Ranks with top 5% of breed

Grey highlight: Ranks with top 20% of breed

