



WIRRUNA
poll herefords

Contact: Ian Locke
Wirruna Poll Hereford Stud
"Spring Valley" Holbrook
NSW 2644

Phone: (02) 60362877
Mobile: (0408) 637 267
Email: locke.ian@bigpond.com
Website: www.wirruna.com

WIRRUNA POLL HEREFORDS

SEMEN SIRES

Young Guns

2019



Wirruna Poll Hereford Stud
 IAN & DIANA LOCKE
 "Spring Valley"
 Holbrook NSW 2644

ph. 02 6036 2877
 fx. 02 6036 3060
 mb. 0408 637 267
 email locke.ian@bigpond.com
 Website www.wirruna.com

Wirruna Semen Sires

Young Guns



		Jan 2019 GROUP BREEDPLAN EBV's											SINDEK VALUE										Semen Price/straw		
Tag No	Animal Tag	Sire	CALVING EASE				GROWTH & MATERNAL					FERTILITY		CARCASE DATA EBV's								Semen Price/straw			
			CED	CEM	GL	BW	200	400	600	MCW	Milk	SS	DC	CW	EMA	Rib Fat	P8 Fat	RBY	IMF	Trial Docility	SM		Grass Fed	Grain Fed	EU Index
N012	Wirruna Nick N012 (ET)	Allendale Anzac E114	+6.2	+3.8	-2.9	+5.2	+51	+87	+123	+110	+20	+4.1	-1.0	+86	+5.2	+1.1	+1.3	-0.3	+3.0	+18	\$153	\$148	\$199	\$164	\$50
N049	Wirruna Noel N049 (AI)	Wirruna Kalimna K326	+1.1	+1.4	-4.3	+3.7	+44	+78	+104	+83	+20	+3.4	-5.6	+82	+5.7	+2.8	+4.1	-0.9	+3.6	-10	\$156	\$156	\$218	\$171	\$50
N168	Wirruna Nixon N168 (AI)	Allendale Anzac E114	+1.4	-0.6	-1.5	+4.6	+46	+81	+110	+85	+18	+4.6	-4.9	+79	+6.1	+2.0	+3.0	-0.2	+2.6	+14	\$152	\$150	\$200	\$167	Pending
N191	Wirruna Novelty N191 (AI)	Wirruna Fort F382	+3.8	+3.3	-3.3	+4.1	+45	+69	+98	+52	+15	+3.2	-6.1	+78	+6.8	+1.5	+1.7	+1.4	+2.4	+13	\$159	\$160	\$215	\$181	Pending
N216	Wirruna Napier N216 (AI)	Wirruna Katnook K74	+2.3	+4.9	-2.4	+5.2	+43	+77	+108	+85	+17	+2.8	-3.0	+84	+8.8	+0.8	+0.2	+2.2	+2.4	-3	\$150	\$148	\$199	\$171	Pending
N449	Wirruna Neutron N449	Wirruna Killara K106	+4.2	+1.5	-2.6	+4.2	+37	+63	+88	+74	+17	+4.5	-8.5	+65	+6.5	+1.5	+1.7	+0.6	+2.3	-18	\$147	\$147	\$198	\$172	\$50
M010	Wirruna Molong M010 (ET)	Wirruna Fletcher F214	+13.9	+10.5	-7.1	-1.4	+32	+56	+67	+36	+23	+2.7	-5.2	+66	+6.9	+1.1	+1.0	+1.7	+1.7	+5	\$137	\$140	\$177	\$157	\$50
M126	Wirruna Manton M126 (AI)	Wirruna Fort F382	+9.1	+7.6	-4.3	+1.6	+38	+62	+90	+71	+17	+2.9	-4.9	+73	+5.0	+0.7	+1.2	+1.4	+1.6	+15	\$145	\$144	\$178	\$163	\$50
M154	Wirruna Malcolm M154 (AI)	Wirruna Justin J13	-4.6	+5.7	-2.9	+3.9	+42	+67	+92	+49	+15	+3.1	-5.6	+66	+5.8	+2.8	+4.0	+0.3	+2.0	+7	\$137	\$137	\$180	\$151	\$50
M175	Wirruna McLaren M175 (AI)	Wirruna Justin J13	+4.0	+4.1	-4.0	+2.8	+43	+76	+94	+60	+14	+2.5	-5.6	+82	+7.3	+1.9	+2.5	+1.2	+1.5	+11	\$149	\$149	\$185	\$166	\$50
M417	Wirruna Monopoly M417	Wirruna Keith K169	-0.1	-2.8	-2.1	+2.7	+35	+58	+78	+68	+19	+3.2	-6.4	+66	+6.0	+1.9	+2.8	+0.1	+2.4	-7	\$122	\$123	\$166	\$140	\$50
M433	Wirruna Michelangelo M433	KCF Bennett Revolution	+12.4	+4.7	+0.4	+0.1	+22	+49	+58	+31	+11	+2.9	-5.1	+54	+9.1	+2.0	+2.2	+1.0	+2.4	-4	\$126	\$132	\$180	\$148	\$50
Breed Ave. '17 drop			+1.1	+1.2	-0.3	+4.4	+33	+54	+77	+67	+16	+2.0	-2.7	+50	+3.3	+0.5	+0.5	+0.8	+0.4	+2	\$88	\$83	\$95	\$98	+ GST

Improve your beef herd profitability with Wirruna Poll Hereford genetics

- Disciplined Approach to Breeding**
All cows must raise live unassisted calf at 2 yrs and rejoin annually in strict 6 week joining period to remain in herd
- High level Performance Program**
*All cattle assessed in large management groups and run at high stocking rates to screen commercially acceptable genetics
 Recognised as one of the leading Breedplan performance recorded herds in Australia*
- Breed leading genetics**
All 2017 Wirruna born calves average in top 5% of the breed for all \$Indices

N012**Wirruna Nick N012 (ET)****WNAN012****(Wirruna Semen Sires)**

Birth Date: 4-Aug-17
 Society ID: WNAN012
 Horn/Scurs/Poll: Homozygous Poll (Poll Gene test)

- Full brother to HAL 'Super Sire' Wirruna Matty M288 with extra frame
- Offers top 1% growth & carcass weight EBVs ...
- ... without compromising the calving ease traits
- Superior marbling to lift carcass quality attributes (top 1% IMF%)



Jan 2019 GROUP BREEDPLAN EBV's

CALVING EASE				GROWTH & MATERNAL				
Calving Ease DIR (%)	Calving Ease DTRS (%)	Gestation Length (days)	Birth Weight	200-Day Growth	400-Day Weight	600-Day Weight	Mat Cow Weight	Genetic Milk
+6.2	+3.8	-2.9	+5.2	+51	+87	+123	+110	+20
57%	50%	69%	76%	72%	71%	72%	67%	63%

FERTILITY		CARCASS						
Scrotal Size (cm)	Days to Calving	Carc Weight	EMA (sq cm)	Rib Fat (mm)	Rump Fat (mm)	RYB (%)	IMF (%)	Trial Docility
+4.1	-1.0	+86	+5.2	+1.1	+1.3	-0.3	+3.0	+18
79%	44%	63%	58%	61%	65%	60%	63%	60%

STRUCTURAL ASSESSMENT							28-Sep-18	Temp.
							18-Dec-18	
6	6	5	6	5	5	4	39	2

INDEX VALUE				Polled Gene	Maturity	Mus Score	EYES	
Supermarket	Grass Fed	Grain Fed	EU Index	PP Homz	Late	C+		Eye Pigment
\$153	\$148	\$199	\$164				3	100/100

Sire: **ALLENDALE ANZAC E114**

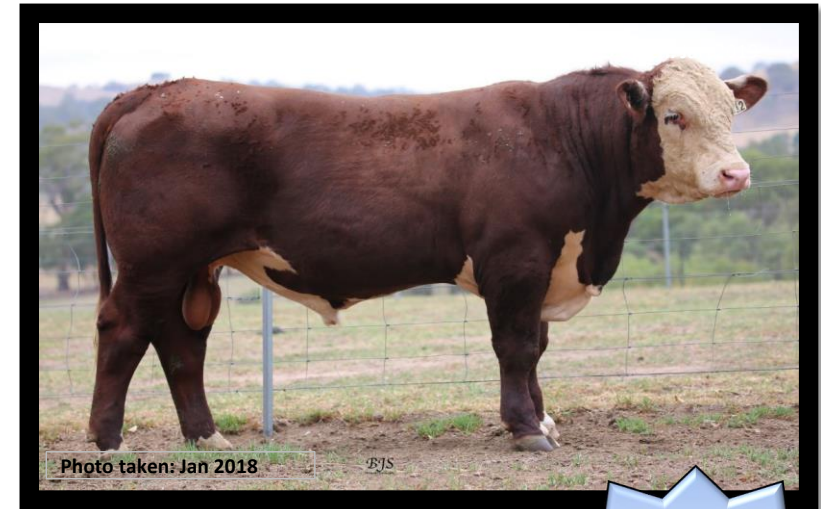
ALLENDALE PUNTER 3
 ALLENDALE YACKA
 ALLENDALE FLORRIE Z33

ALLENDALE NATIONAL W168
 ALLENDALE DAWN B22 (AI) (ET)
 ALLENDALE DAWN T60 (AI)

ARDO HUSTLER 4110 (IMP)
 ELITE 4110 E212
 SOUTH BUKALONG WINIFRED 54

Dam: **WIRRUNA CIRCLE H13**

KOANUI ROCKET 0219
 WIRRUNA CIRCLE F31
 WIRRUNA CIRCE D80



Black highlight: Ranks with top 5% of breed

Grey highlight: Ranks with top 20% of breed

N049**Wirruna Noel N049 (AI)****WNAN049****(Wirruna Semen Sires)**

Birth Date: 9-Aug-17
 Society ID: WNAN049
 Horn/Scurs/Poll: Poll

- Upstanding Kalimna son with excellent head carriage
- Among the highest marbling bulls in the breed - fast-track your herd IMF%
- Excellent curve-bending growth from a low birthweight base
- Highest Grainfed \$Index bull - appreciate his number of top 5% traits

WIRRUNA EXPLORER E188
 WIRRUNA HARTWIG H297
 WIRRUNA MIDGE A51

Sire: WIRRUNA KALIMNA K326

ARDO HUSTLER 4110 (IMP)
 WIRRUNA CORA H303
 WIRRUNA CORA D9

CAPETHORNE HOT SHOT 03 22
 MATARIKI HOLY-SMOKE
 MATARIKI GIRLIE 00323

Dam: WIRRUNA CIRCE L192

BANEMORE NORTH END D36
 CO-OP5 CIRCE G396
 SOUTH BUKALONG CIRCE 105

**Easy-calve**

Jan 2019 GROUP BREEDPLAN EBV's

CALVING EASE				GROWTH & MATERNAL				
Calving Ease DIR (%)	Calving Ease DTRS (%)	Gestation Length (days)	Birth Weight	200-Day Growth	400-Day Weight	600-Day Weight	Mat Cow Weight	Genetic Milk
+1.1	+1.4	-4.3	+3.7	+44	+78	+104	+83	+20
51%	38%	76%	73%	68%	68%	67%	60%	44%

FERTILITY		CARCASE						
Scrotal Size (cm)	Days to Calving	Carc Weight	EMA (sq cm)	Rib Fat (mm)	Rump Fat (mm)	RBV (%)	IMF (%)	Trial Docility
+3.4	-5.6	+82	+5.7	+2.8	+4.1	-0.9	+3.6	-10
77%	38%	57%	51%	55%	59%	53%	55%	53%

STRUCTURAL ASSESSMENT							28-Sep-18	Temp.
							18-Dec-18	
6	5	5	5	5	5	5	36	2

\$INDEX VALUE				Polled Gene	Maturity	Mus Score	EYES	
Supermarket	Grass Fed	Grain Fed	EU Index					Eye Pigment
\$156	\$156	\$218	\$171	Ph Hetz	Mid	C+		100/100
							4	



Semen Price \$50/straw

Black highlight: Ranks with top 5% of breed
 Grey highlight: Ranks with top 20% of breed

N168**Wirruna Nixon N168 (AI)****WNAN168****(Wirruna Semen Sires)**

Birth Date: 14-Aug-17
 Society ID: WNAN168
 Horn/Scurs/Poll: Homozygous Poll (Poll Gene test)

- I like the balance of this thick-bodied & easy-doing Anzac Sire
- Achieved top 1% growth within a moderate framed animal
- Combines carcass quality & quantity - top 5% EMA & top 1% IMF%
- Exceptional \$Index values reflect his exceptional balance of traits

Twin



Jan 2019 GROUP BREEDPLAN EBV's

CALVING EASE				GROWTH & MATERNAL				
Calving Ease DIR (%)	Calving Ease DTRS (%)	Gestation Length (days)	Birth Weight	200-Day Growth	400-Day Weight	600-Day Weight	Mat Cow Weight	Genetic Milk
+1.4	-0.6	-1.5	+4.6	+46	+81	+110	+85	+18
55%	49%	68%	74%	70%	69%	69%	65%	60%

FERTILITY		CARCASS						
Scrotal Size (cm)	Days to Calving	Carc Weight	EMA (sq cm)	Rib Fat (mm)	Rump Fat (mm)	RYB (%)	IMF (%)	Trial Docility
+4.6	-4.9	+79	+6.1	+2.0	+3.0	-0.2	+2.6	+14
77%	44%	60%	56%	59%	62%	58%	60%	57%

STRUCTURAL ASSESSMENT							28-Sep-18	Temp.
Front	Back	Front	Back				5-Dec-18	
6	6	5	6	5	5	4	41	2

\$INDEX VALUE				Polled Gene	Maturity	Mus Score	EYES	
Supermarket	Grass Fed	Grain Fed	EU Index					Eye Pigment
\$152	\$150	\$200	\$167	PP Homz	Early	C+		100/100
							4	

Sire: **ALLENDALE ANZAC E114**

ALLENDALE PUNTER 3
 ALLENDALE YACKA
 ALLENDALE FLORRIE Z33

ALLENDALE NATIONAL W168
 ALLENDALE DAWN B22 (AI) (ET)
 ALLENDALE DAWN T60 (AI)

ARDO HUSTLER 4110 (IMP)
 ELITE 4110 E212
 SOUTH BUKALONG WINIFRED 54

Dam: **WIRRUNA DIDO H45**

MOUNT DIFFICULT FELLIS Y12 (AI)
 WIRRUNA Dido F371
 SOUTH BUKALONG DIDO 65



Semen Price
\$Pending/st

Black highlight: Ranks with top 5% of breed

Grey highlight: Ranks with top 20% of breed

N191**Wirruna Novelty N191 (AI)****WNAN191****(Wirruna Semen Sires)**

Birth Date: 15-Aug-17
 Society ID: WNAN191
 Horn/Scurs/Poll: Homozygous Poll (Poll Gene test)

- A curve-bending Fort son with extra frame
- Combines that dream combination of muscle & marbling in top 1%
- Few bulls could boast higher \$Index values indicating profit potential
- Independent structural assessment gives him a perfect score

*Easy-calve*

Jan 2019 GROUP BREEDPLAN EBV's

CALVING EASE				GROWTH & MATERNAL				
Calving Ease DIR (%)	Calving Ease DTRS (%)	Gestation Length (days)	Birth Weight	200-Day Growth	400-Day Weight	600-Day Weight	Mat Cow Weight	Genetic Milk
+3.8	+3.3	-3.3	+4.1	+45	+69	+98	+52	+15
53%	44%	76%	74%	69%	69%	69%	64%	59%

FERTILITY		CARCASE						
Scrotal Size (cm)	Days to Calving	Carc Weight	EMA (sq cm)	Rib Fat (mm)	Rump Fat (mm)	RBV (%)	IMF (%)	Trial Docility
+3.2	-6.1	+78	+6.8	+1.5	+1.7	+1.4	+2.4	+13
78%	44%	59%	54%	57%	61%	55%	58%	55%

STRUCTURAL ASSESSMENT						28-Sep-18	Temp.
5	5	5	5	5	5	4	18-Dec-18 38
							2

\$INDEX VALUE				Polled Gene	Maturity	Mus Score	EYES	
Supermarket	Grass Fed	Grain Fed	EU Index	PP Homz	Late	C+		Eye Pigment
\$159	\$160	\$215	\$181				3	100/95

Sire: **WIRRUNA FORT F382**

SOUTH BUKALONG WALKER 6
 SOUTH BUKALONG WALLACE 2
 SOUTH BUKALONG VICTORIA 152

MOUNT DIFFICULT FELLIS Y12 (AI)
 MOUNT DIFFICULT LORNA B123
 MOUNT DIFFICULT LORNA X73

GH ADAMS TARGET 5S (IMP)
 WIRRUNA HURRICANE H132
 WIRRUNA FLORA D261

Dam: **WIRRUNA LAST DAY K210**

ARDO HUSTLER 4110 (IMP)
 WIRRUNA LAST DAY H333
 WIRRUNA LAST DAY D84



Semen Price \$Pending/st

Black highlight: Ranks with top 5% of breed

Grey highlight: Ranks with top 20% of breed

N216**Wirruna Napier N216 (AI)****WNAN216****(Wirruna Semen Sires)**

Birth Date: 16-Aug-17
 Society ID: WNAN216
 Horn/Scurs/Poll: Homozygous Poll (Poll Gene test)

- Napier is a classy, good-barrelled sire by Katnook
- Exceptional carcase traits - Top-end CWT, EMA, RBY% & IMF% EBVs
- I like the natural growth displayed - top 5% growth EBVs
- High \$Index Sire - top 1% ranking reflects ideal balance of traits



Jan 2019 GROUP BREEDPLAN EBV's

CALVING EASE				GROWTH & MATERNAL				
Calving Ease DIR (%)	Calving Ease DTRS (%)	Gestation Length (days)	Birth Weight	200-Day Growth	400-Day Weight	600-Day Weight	Mat Cow Weight	Genetic Milk
+2.3	+4.9	-2.4	+5.2	+43	+77	+108	+85	+17
46%	35%	75%	73%	68%	68%	67%	61%	48%

FERTILITY		CARCASE						
Scrotal Size (cm)	Days to Calving	Carc Weight	EMA (sq cm)	Rib Fat (mm)	Rump Fat (mm)	RBY (%)	IMF (%)	Trial Docility
+2.8	-3.0	+84	+8.8	+0.8	+0.2	+2.2	+2.4	-3
77%	37%	57%	52%	55%	59%	53%	55%	50%

STRUCTURAL ASSESSMENT							28-Sep-18	Temp.
							18-Dec-18	
5	6	5	6	5	5	4	35	2

\$INDEX VALUE				Polled Gene	Maturity	Mus Score	EYES	
Supermarket	Grass Fed	Grain Fed	EU Index	PP Homz	Mid	C+		Eye Pigment
\$150	\$148	\$199	\$171				4	100/100

Sire: **WIRRUNA KATNOOK K74**

QUAMBY PLAINS STOCKMASTER Y116
 WIRRUNA FLETCHER F214
 WIRRUNA LAST DAY B16 (H)

WIRRUNA DAFFY D1
 WIRRUNA VICTORIA G7
 WIRRUNA VICTORIA E112

KCF BENNETT 3008 M326
 NJW 73S M326 TRUST 100W
 NJW P606 72N DAYDREAM 73S

Dam: **WIRRUNA MABEL K428**

SOUTH BUKALONG WALLACE 2
 WIRRUNA MABEL F127
 MOUNT DIFFICULT MABEL Z85



Black highlight: Ranks with top 5% of breed

Grey highlight: Ranks with top 20% of breed

N449 ✓

Wirruna Neutron N449

WNAN449

(Wirruna Semen Sires)

Birth Date: 2-Sep-17
 Society ID: WNAN449
 Horn/Scurs/Poll: Poll

- ✓ 2nd Sire produced by this Dam - note exceptional muscle through the loin
- ✓ An excellent EBV profile places him in the top 1% for all indexes
- ✓ Offers superior carcase attributes - top 5% ranking for EMA & top 1% IMF%
- ✓ Strong Fertility traits with good scrotal size & Days to Calving EBVs

QUAMBY PLAINS STOCKMASTER Y116
 WIRRUNA FLETCHER F214
 WIRRUNA LAST DAY B16 (H)

Sire: **WIRRUNA KILLARA K106**

WIRRUNA DAFFY D1
 WIRRUNA MIDGE G482
 WIRRUNA MIDGE C76

STUDBROOK D'ARTAGNION V086 (AI) (I)
 OTAPAWA SPARK 3060 (IMP)
 OTAPAWA SPOT P30

Dam: **WIRRUNA VICTORIA J199**

SOUTH BUKALONG UNGAR 8
 SOUTH BUKALONG VICTORIA 236
 SOUTH BUKALONG VICTORIA 200



Easy-calve

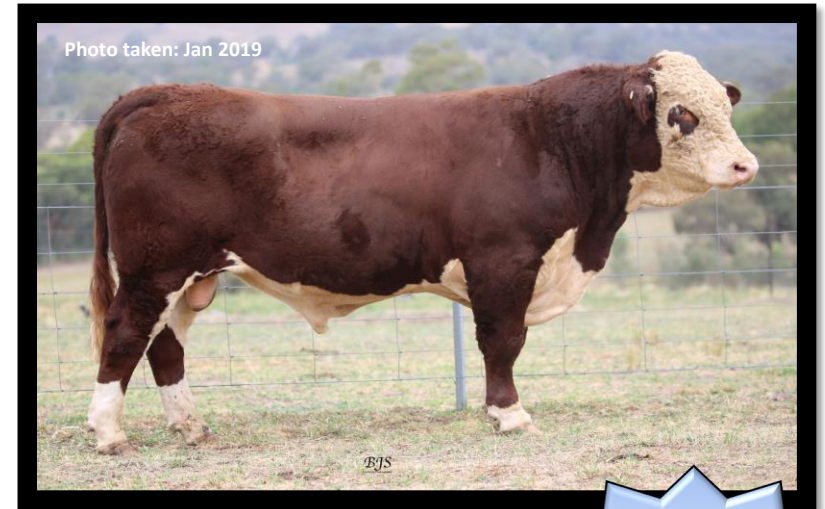
Jan 2019 GROUP BREEDPLAN EBV's

CALVING EASE				GROWTH & MATERNAL				
Calving Ease DIR (%)	Calving Ease DTRS (%)	Gestation Length (days)	Birth Weight	200-Day Growth	400-Day Weight	600-Day Weight	Mat Cow Weight	Genetic Milk
+4.2	+1.5	-2.6	+4.2	+37	+63	+88	+74	+17
45%	37%	62%	72%	67%	67%	66%	60%	51%

FERTILITY		CARCASE						
Scrotal Size (cm)	Days to Calving	Carc Weight	EMA (sq cm)	Rib Fat (mm)	Rump Fat (mm)	RBV (%)	IMF (%)	Trial Docility
+4.5	-8.5	+65	+6.5	+1.5	+1.7	+0.6	+2.3	-18
77%	40%	55%	51%	55%	59%	53%	54%	51%

STRUCTURAL ASSESSMENT						28-Sep-18	Temp.
Front	Back	Front	Back			18-Dec-18	
						38	
6	6	5	6	5	5	4	2

INDEX VALUE				Polled Gene	Maturity	Mus Score	EYES	
Supermarket	Grass Fed	Grain Fed	EU Index					Eye Pigment
\$147	\$147	\$198	\$172	Ph Hetz	Mid	B-		100/100
							4	



Semen Price \$50/straw

Black highlight: Ranks with top 5% of breed
 Grey highlight: Ranks with top 20% of breed

M010**Wirruna Molong M010 (ET)****WNAM010****(Wirruna Semen Sires)**

Birth Date: 4-Aug-16
 Society ID: WNAM010
 Horn/Scurs/Poll: Poll

- Stylish & ideally shaped calving ease Wirruna sire
- A real carcase improver, combining top 5% IMF% with top 1% EMA
- ET calf out of a proven dam, offers milk, longevity & \$Indices in top 1%
- Few bulls can beat this fellow for short gestation length - early born calves

NOOKEN VALERIAN 2
 QUAMBY PLAINS STOCKMASTER Y118
 QUAMBY PLAINS MAGPIE W9

Sire: WIRRUNA FLETCHER F214

MOUNT DIFFICULT UNGAR (S)
 WIRRUNA LAST DAY B16 (H)
 WIRRUNA LAST DAY Z152

KOANUI ROCKET Q334
 KOANUI ROCKET 0219
 KOANUI ANGEL R187

Dam: WIRRUNA CORA D9

MOUNT DIFFICULT FELLIS Y12 (AI)
 WIRRUNA CORA B38
 WIRRUNA CORA U68

*Easy-calve*

Jan 2019 GROUP BREEDPLAN EBV's

CALVING EASE				GROWTH & MATERNAL				
Calving Ease DIR (%)	Calving Ease DTRS (%)	Gestation Length (days)	Birth Weight	200-Day Growth	400-Day Weight	600-Day Weight	Mat Cow Weight	Genetic Milk
+13.9	+10.5	-7.1	-1.4	+32	+56	+67	+36	+23
66%	52%	69%	88%	78%	76%	78%	71%	64%

FERTILITY		CARCASE						
Scrotal Size (cm)	Days to Calving	Carc Weight	EMA (sq cm)	Rib Fat (mm)	Rump Fat (mm)	RYB (%)	IMF (%)	Trial Docility
+2.7	-5.2	+66	+6.9	+1.1	+1.0	+1.7	+1.7	+5
79%	49%	66%	60%	62%	65%	60%	62%	61%

STRUCTURAL ASSESSMENT				25-Jun-18		Temp.	
Front	Back	Front	Back				
6	6	6	6	5	5	4	40
							1

INDEX VALUE				Polled Gene	Maturity	Mus Score	EYES	
Supermarket	Grass Fed	Grain Fed	EU Index					Eye Pigment
\$137	\$140	\$177	\$157	Ph Hetz	Mid	C+		100/100
							4	



Semen Price \$50/straw

Black highlight: Ranks with top 5% of breed

Grey highlight: Ranks with top 20% of breed

M126**Wirruna Manton M126 (AI)****WNAM126****(Wirruna Semen Sires)**

Birth Date: 12-Aug-16
 Society ID: WNAM126
 Horn/Scurs/Poll: Homozygous Poll (Poll Gene test)

- Fort son with curve-bending growth from moderate BW & good CE
- Deep bodied sire with sound structure, herd improving carcase & docility
- Top-end \$Index values reflect an exceptional balance of commercial traits
- Dam J124 is an outstanding Donor cow, breeding consistently well

*Easy-calve*

Jan 2019 GROUP BREEDPLAN EBV's

CALVING EASE				GROWTH & MATERNAL				
Calving Ease DIR (%)	Calving Ease DTRS (%)	Gestation Length (days)	Birth Weight	200-Day Growth	400-Day Weight	600-Day Weight	Mat Cow Weight	Genetic Milk
+9.1	+7.6	-4.3	+1.6	+38	+62	+90	+71	+17
62%	51%	77%	87%	77%	75%	77%	71%	60%

FERTILITY		CARCASE						
Scrotal Size (cm)	Days to Calving	Carc Weight	EMA (sq cm)	Rib Fat (mm)	Rump Fat (mm)	RYB (%)	IMF (%)	Trial Docility
+2.9	-4.9	+73	+5.0	+0.7	+1.2	+1.4	+1.6	+15
79%	46%	63%	56%	58%	62%	57%	59%	57%

STRUCTURAL ASSESSMENT							25-Jun-18	Temp.
							20-Jun-18	
6	6	6	6	5	5	4	39	1

\$INDEX VALUE				Polled Gene	Maturity	Mus Score	EYES	
Supermarket	Grass Fed	Grain Fed	EU Index					Eye Pigment
\$145	\$144	\$178	\$163	PP <i>Homz</i>	<i>Mid</i>	C+		100/100

Sire: **WIRRUNA FORT F382**

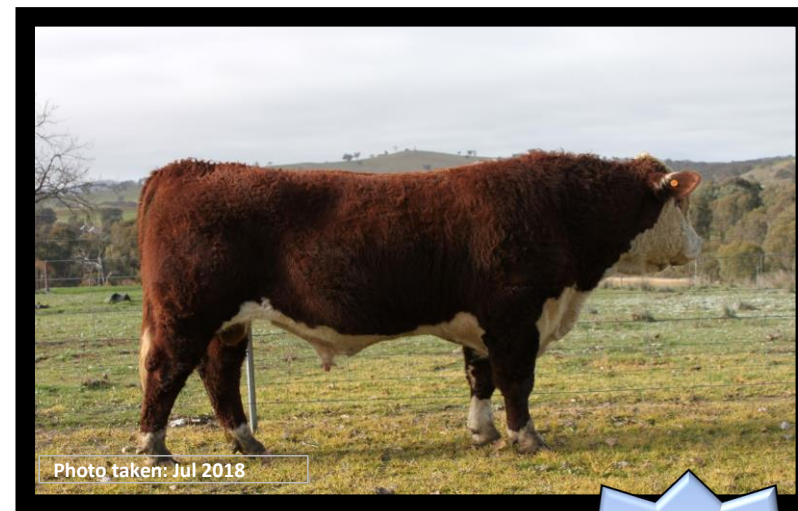
SOUTH BUKALONG WALKER 6
 SOUTH BUKALONG WALLACE 2
 SOUTH BUKALONG VICTORIA 152

MOUNT DIFFICULT FELLIS Y12 (AI)
 MOUNT DIFFICULT LORNA B123
 MOUNT DIFFICULT LORNA X73

STUDBROOK D'ARTAGNION V086 (AI) (OTAPAWA SPARK 3060 (IMP)
 OTAPAWA SPOT P30

Dam: **WIRRUNA CIRCLE J124**

KOANUI ROCKET 0219
 WIRRUNA CIRCLE F31
 WIRRUNA CIRCE D80



Semen Price \$50/straw

Black highlight: Ranks with top 5% of breed

Grey highlight: Ranks with top 20% of breed

M154**Wirruna Malcolm M154 (AI)****WNAM154****(Wirruna Semen Sires)**

Birth Date: 13-Aug-16
 Society ID: WNAM154
 Horn/Scurs/Poll: Homozygous Poll (Poll Gene test)

- An excellent easy-doing, sound & proven Justin son
- A leading bull for the fat traits to boost finishing & female fertility traits
- Combines carcass quality & quantity - top 5% EMA & top 1% IMF%
- Strong fertility traits contribute to the high \$Index values (top 1%)

CAPETHORNE HOT SHOT 03 22
MATARIKI HOLY-SMOKE
MATARIKI GIRLIE 00323

Sire: WIRRUNA JUSTIN J13

WIRRUNA ELDAD E107
WIRRUNA DOREEN G393
WIRRUNA DOREEN E42

SOUTH BUKALONG WALLACE 2
WIRRUNA ECHUCA E99
WIRRUNA GOLDEN VANITY C32

Dam: WIRRUNA MADAM J74

SOUTH BUKALONG WALLACE 2
WIRRUNA MADAM E325
WIRRUNA MADAM A10

*Easy-calve*

Jan 2019 GROUP BREEDPLAN EBV's

CALVING EASE				GROWTH & MATERNAL				
Calving Ease DIR (%)	Calving Ease DTRS (%)	Gestation Length (days)	Birth Weight	200-Day Growth	400-Day Weight	600-Day Weight	Mat Cow Weight	Genetic Milk
-4.6	+5.7	-2.9	+3.9	+42	+67	+92	+49	+15
67%	49%	77%	86%	77%	75%	77%	70%	56%

FERTILITY		CARCASS						
Scrotal Size (cm)	Days to Calving	Carc Weight	EMA (sq cm)	Rib Fat (mm)	Rump Fat (mm)	RBY (%)	IMF (%)	Trial Docility
+3.1	-5.6	+66	+5.8	+2.8	+4.0	+0.3	+2.0	+7
79%	47%	64%	57%	61%	64%	57%	62%	56%

STRUCTURAL ASSESSMENT							25-Jun-18	Temp.
Front	Back	Front	Back				20-Jun-18	
6	6	5	6	5	5	3	39	1

INDEX VALUE				Polled Gene	Maturity	Mus Score	EYES	
Supermarket	Grass Fed	Grain Fed	EU Index					Eye Pigment
\$137	\$137	\$180	\$151	PP <i>Homz</i>	<i>Mid</i>	C+		100/100



Semen Price \$50/straw

Black highlight: Ranks with top 5% of breed

Grey highlight: Ranks with top 20% of breed

M175**Wirruna McLaren M175 (AI)****WNAM175****(Wirruna Semen Sires)**

Birth Date: 13-Aug-16
 Society ID: WNAM175
 Horn/Scurs/Poll: Homozygous Poll (Poll Gene test)

- The standout Justin son with curve-bending growth
- I like his stretchy body, conformation & clean front-end
- High value carcass boosting attributes - top 1% CWT, EMA & top 5% IMF% EBV
- In the top 20 '2016 born' bulls for \$Index values -high profit EBVs

*Easy-calve*

Jan 2019 GROUP BREEDPLAN EBV's

CALVING EASE				GROWTH & MATERNAL				
Calving Ease DIR (%)	Calving Ease DTRS (%)	Gestation Length (days)	Birth Weight	200-Day Growth	400-Day Weight	600-Day Weight	Mat Cow Weight	Genetic Milk
+4.0	+4.1	-4.0	+2.8	+43	+76	+94	+60	+14
60%	45%	76%	85%	76%	74%	77%	69%	54%

FERTILITY		CARCASS						
Scrotal Size (cm)	Days to Calving	Carc Weight	EMA (sq cm)	Rib Fat (mm)	Rump Fat (mm)	RBY (%)	IMF (%)	Trial Docility
+2.5	-5.6	+82	+7.3	+1.9	+2.5	+1.2	+1.5	+11
78%	45%	63%	56%	59%	62%	55%	60%	55%

STRUCTURAL ASSESSMENT							25-Jun-18	Temp.
Front	Back	Front	Back				20-Jun-18	
6	5	5	5	5	5	3	38	2

INDEX VALUE				Polled Gene	Maturity	Mus Score	EYES	
Supermarket	Grass Fed	Grain Fed	EU Index					Eye Pigment
\$149	\$149	\$185	\$166	PP <i>Homz</i>	<i>Mid</i>	C+		100/100
							4	

Sire: **WIRRUNA JUSTIN J13**
 CAPETHORNE HOT SHOT 03 22
 MATARIKI HOLY-SMOKE
 MATARIKI GIRLIE 00323

WIRRUNA ELDAD E107
 WIRRUNA DOREEN G393
 WIRRUNA DOREEN E42

SOUTH BUKALONG WALLACE 2
 WIRRUNA FORT F382
 MOUNT DIFFICULT LORNA B123

Dam: **WIRRUNA LORNA J413**
 MOUNT DIFFICULT ACCURATE (AI)
 MOUNT DIFFICULT LORNA C11
 MOUNT DIFFICULT LORNA A65



Semen Price \$50/straw

Black highlight: Ranks with top 5% of breed
 Grey highlight: Ranks with top 20% of breed

M417**Wirruna Monopoly M417****WNAM417****(Wirruna Semen Sires)**

Birth Date: 29-Aug-16
 Society ID: WNAM417
 Horn/Scurs/Poll: Homozygous Poll (Poll Gene test)

- Easy-fleshing sire used over heifers at Wirruna
- Offers superior carcase attributes - top 1% ranking for marbling
- Capture his all important & strong fertility traits with good SS & top 1% DtC EBVs
- Dam has great udder - her next calf has also been chosen as a Wirruna Sire (N4)

*Easy-calve*

Jan 2019 GROUP BREEDPLAN EBV's

CALVING EASE				GROWTH & MATERNAL				
Calving Ease DIR (%)	Calving Ease DTRS (%)	Gestation Length (days)	Birth Weight	200-Day Growth	400-Day Weight	600-Day Weight	Mat Cow Weight	Genetic Milk
-0.1	-2.8	-2.1	+2.7	+35	+58	+78	+68	+19
62%	45%	62%	86%	74%	71%	75%	66%	51%

FERTILITY		CARCASE						
Scrotal Size (cm)	Days to Calving	Carc Weight	EMA (sq cm)	Rib Fat (mm)	Rump Fat (mm)	RBY (%)	IMF (%)	Trial Docility
+3.2	-6.4	+66	+6.0	+1.9	+2.8	+0.1	+2.4	-7
76%	40%	58%	50%	54%	57%	52%	52%	45%

STRUCTURAL ASSESSMENT							25-Jun-18	Temp.
Front	Back	Front	Back				20-Jun-18	
6	6	6	6	6	6	3	39	2

INDEX VALUE				Polled Gene	Maturity	Mus Score	EYES	
Supermarket	Grass Fed	Grain Fed	EU Index					Eye Pigment
\$122	\$123	\$166	\$140	PP <i>Homz</i>	<i>Mid</i>	C+		100/100
							4	

Sire: **WIRRUNA KEITH K169**

CAPETHORNE HOT SHOT 03 22
 MATARIKI HOLY-SMOKE
 MATARIKI GIRLIE 00323

MOUNT DIFFICULT FELLIS Y12 (AI)
 WIRRUNA DIDO F397
 SOUTH BUKALONG DIDO 65

STUDBROOK D'ARTAGNION V086 (AI) (OTAPAWA SPARK 3060 (IMP)
 OTAPAWA SPOT P30

Dam: **WIRRUNA VICTORIA J199**

SOUTH BUKALONG UNGAR 8
 SOUTH BUKALONG VICTORIA 236
 SOUTH BUKALONG VICTORIA 200



Semen Price \$50/straw

Black highlight: Ranks with top 5% of breed

Grey highlight: Ranks with top 20% of breed

M433**Wirruna Michelangelo M433****WNAM433****(Wirruna Semen Sires)**

Birth Date: 30-Aug-16
 Society ID: WNAM433
 Horn/Scurs/Poll: Homozygous Poll (Poll Gene test)

- A shapely X51 son with semen exported to UK
- Few bulls offer such carcase boosting traits - top 1% EMA & IMF%
- Features excellent calving ease, good muscle & conformation
- Dam is top Donor cow with 3 other sons used as sires at Wirruna

*Easy-calve*

Jan 2019 GROUP BREEDPLAN EBV's

CALVING EASE				GROWTH & MATERNAL				
Calving Ease DIR (%)	Calving Ease DTRS (%)	Gestation Length (days)	Birth Weight	200-Day Growth	400-Day Weight	600-Day Weight	Mat Cow Weight	Genetic Milk
+12.4	+4.7	+0.4	+0.1	+22	+49	+58	+31	+11
57%	41%	65%	83%	75%	73%	72%	65%	58%

FERTILITY		CARCASE						
Scrotal Size (cm)	Days to Calving	Carc Weight	EMA (sq cm)	Rib Fat (mm)	Rump Fat (mm)	RBV (%)	IMF (%)	Trial Docility
+2.9	-5.1	+54	+9.1	+2.0	+2.2	+1.0	+2.4	-4
78%	39%	59%	54%	57%	60%	54%	57%	59%

STRUCTURAL ASSESSMENT							29-Sep-17	Temp.
							30-Oct-17	
6	6	5	5	5	5	4	36	2

INDEX VALUE				Polled Gene	Maturity	Mus Score	EYES	
Supermarket	Grass Fed	Grain Fed	EU Index					Eye Pigment
\$126	\$132	\$180	\$148	PP <i>Homz</i>	<i>Mid</i>	B-		100/100
							4	

Sire: KCF BENNETT REVOLUTION X51

FELTONS LEGEND 242 (IMP USA)
 MSU TCF REVOLUTION 4R
 MSU TCF RACHAEL ET 54N

EFBEEF SCHU-LAR PROFICIENT N093
 KCF MISS PROFICIENT U201
 KCF MISS 774 L82

MARKOWEN INTRUDER
 WIRRUNA CANDIDATE C118
 WIRRUNA FLORA Z267

Dam: WIRRUNA CORA E319

MOUNT DIFFICULT FELLIS Y12 (AI)
 WIRRUNA CORA B38
 WIRRUNA CORA U68



Semen Price
\$50/straw

Black highlight: Ranks with top 5% of breed

Grey highlight: Ranks with top 20% of breed

January 2019 Hereford GROUP BREEDPLAN - Percentile Bands for all 2017 born animals

Use this table as a guide to compare individual animals with the current genetic level of the breed

	Calv-Ease		Birth		Growth					Fert		Carcase					Extra		Indexes				
	Dir	Dtrs	GL	Bwt	200	400	600	Mwt	Milk	SS	DC	Cwt	EMA	Rib	P8	RBY	IMF	Doc	NFI	SM	GS	GN	EU
	%		days	kg					cm	days	kg	sq.cm	mm		%	kg/day		\$					
High 1%	+12.4	+8.4	-5.7	-0.8	+46	+76	+110	+106	+25	+3.9	-5.9	+75	+6.6	+2.1	+3.0	+2.4	+1.9	+19	-0.28	+139	+137	+174	+154
High 5%	+9.8	+6.4	-3.2	+0.9	+42	+70	+100	+95	+22	+3.2	-5.0	+67	+5.5	+1.6	+2.2	+1.9	+1.3	+15	-0.18	+125	+122	+151	+139
High 10%	+8.0	+5.3	-2.3	+1.7	+40	+66	+95	+89	+21	+2.9	-4.4	+63	+4.9	+1.3	+1.8	+1.6	+1.1	+13	-0.14	+117	+114	+138	+129
High 15%	+6.8	+4.6	-1.9	+2.3	+39	+64	+91	+85	+20	+2.7	-4.1	+60	+4.6	+1.2	+1.6	+1.5	+0.9	+11	-0.12	+111	+107	+129	+123
High 20%	+5.7	+4.0	-1.5	+2.8	+38	+62	+88	+82	+19	+2.5	-3.9	+58	+4.3	+1.0	+1.4	+1.3	+0.8	+9	-0.10	+106	+102	+122	+118
High 25%	+4.8	+3.5	-1.2	+3.2	+37	+60	+86	+79	+18	+2.4	-3.6	+57	+4.0	+0.9	+1.2	+1.2	+0.7	+8	-0.07	+102	+98	+116	+113
High 30%	+4.0	+3.0	-1.0	+3.5	+36	+59	+84	+77	+18	+2.3	-3.4	+55	+3.8	+0.8	+1.1	+1.1	+0.6	+7	-0.05	+99	+95	+111	+110
High 35%	+3.2	+2.5	-0.8	+3.8	+35	+58	+82	+74	+17	+2.2	-3.2	+54	+3.6	+0.8	+0.9	+1.0	+0.5	+6	-0.04	+96	+91	+106	+106
High 40%	+2.4	+2.1	-0.6	+4.1	+34	+56	+80	+72	+17	+2.1	-3.0	+52	+3.5	+0.7	+0.8	+1.0	+0.5	+5	-0.02	+92	+88	+101	+103
High 45%	+1.7	+1.7	-0.4	+4.4	+34	+55	+79	+70	+16	+2.0	-2.9	+51	+3.3	+0.6	+0.7	+0.9	+0.4	+4	-0.01	+90	+85	+97	+100
50%	+1.0	+1.3	-0.2	+4.6	+33	+54	+77	+68	+16	+1.9	-2.7	+50	+3.2	+0.5	+0.5	+0.8	+0.4	+3	+0.00	+87	+82	+93	+97
Low 45%	+0.4	+0.8	-0.1	+4.8	+32	+53	+75	+66	+15	+1.8	-2.5	+49	+3.0	+0.4	+0.4	+0.7	+0.3	+2	+0.01	+84	+79	+89	+93
Low 40%	-0.3	+0.4	+0.1	+5.1	+31	+52	+73	+64	+15	+1.8	-2.3	+47	+2.9	+0.3	+0.3	+0.6	+0.2	+1	+0.02	+81	+76	+85	+90
Low 35%	-0.9	+0.0	+0.3	+5.3	+31	+51	+72	+61	+14	+1.7	-2.1	+46	+2.7	+0.2	+0.1	+0.6	+0.2	+0	+0.04	+78	+73	+81	+87
Low 30%	-1.6	-0.4	+0.5	+5.6	+30	+49	+70	+59	+14	+1.6	-1.9	+45	+2.6	+0.1	+0.0	+0.5	+0.1	-2	+0.05	+75	+70	+77	+84
Low 25%	-2.4	-0.9	+0.7	+5.8	+29	+48	+67	+56	+13	+1.5	-1.7	+43	+2.4	+0.0	-0.1	+0.4	+0.0	-3	+0.06	+72	+67	+73	+80
Low 20%	-3.2	-1.4	+0.9	+6.1	+28	+46	+65	+53	+12	+1.3	-1.4	+41	+2.2	-0.1	-0.3	+0.3	+0.0	-5	+0.07	+68	+63	+68	+76
Low 15%	-4.2	-2.1	+1.2	+6.4	+27	+44	+62	+50	+12	+1.2	-1.2	+39	+2.1	-0.2	-0.5	+0.2	-0.1	-7	+0.08	+64	+59	+62	+72
Low 10%	-5.6	-2.9	+1.5	+6.8	+25	+42	+59	+45	+11	+1.1	-0.9	+37	+1.8	-0.4	-0.7	+0.0	-0.2	-9	+0.10	+59	+54	+57	+67
Low 5%	-7.8	-4.2	+2.1	+7.3	+23	+38	+53	+38	+9	+0.8	-0.5	+33	+1.5	-0.6	-1.1	-0.2	-0.4	-14	+0.12	+53	+48	+48	+60
Low 1%	-12.4	-6.9	+5.2	+8.4	+17	+29	+40	+21	+6	+0.3	+0.2	+25	+0.9	-1.0	-1.7	-0.6	-0.7	-32	+0.19	+40	+36	+34	+46